

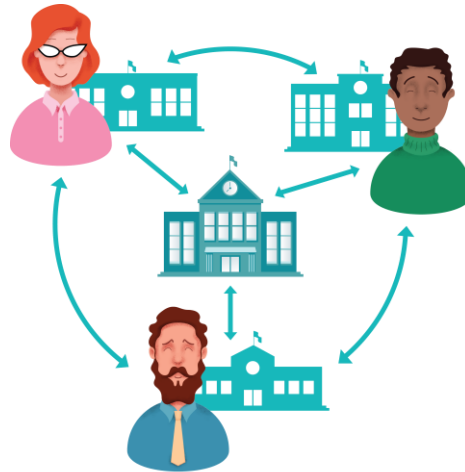


# New Mexico Public Education Department

Opportunities for students to connect their learning experiences to the real world develops knowledge and skills directly linked to their college and career goals.

The best elements of college and career readiness that contribute to higher graduation rates need to be shared and supported.

Through technology-enabled collaborative learning, ECHO creates access for teachers across New Mexico to experts and professional development to better help their students graduate high school and on to a smooth pathway to their goals.



Hub and spoke knowledge-sharing networks create a learning loop:

Local teacher leaders learn from specialists in best practices and innovation.

Teacher leaders learn from each other.

Specialists learn from teacher leaders as best practices emerge.

## Doing More for More Students Through Case-Based Learning



### Community

- Reduce disparities
- Build & retain good teachers
- Skilled & engaged workforce



### Teachers

- Acquire new knowledge
- Access to experts & innovation
- Building a community of practice
- Career advancement in Domain 4



### Students

- More knowledge
- Better skills
- Overcome Barriers
- Clear direction for transition to adulthood



### State Systems

- Increase graduation rates
- Reduce remediation rates
- Develop our economy through a knowledgeable, prepared workforce

## Transforming Education in New Mexico



### Leverages by Mentoring

Experts in career education and counseling, community based learning, and subject matter experts in key career clusters share their knowledge & best practices with participants.



### Creates virtual learning communities

Teachers in the smallest schools can connect to others, collaborate, and share their best practices and challenges.



### Technology

Participants use Technology to leverage scarce resources and improve access.

For More Information about NMPED contact: Dr. Michael Stanton, ECHO for Education Lead, at michael.stanton2@state.nm.us

Are you a part of ECHO?

www.echo.unm.edu



# New Mexico ECHO for Education

## Pilot Details

**Introduction Webinar:** Oct 16<sup>th</sup> at 3:30pm

**“Request to Participate” letter and signed “Memorandum of Understanding” due:** October 27<sup>th</sup>

**Immersion and Orientation:** ECHO for Education kick-off workshop November 30<sup>th</sup>

**ECHO Practice Session:** Dec. 5<sup>th</sup> or Dec 6<sup>th</sup> 3:30pm

**Sessions begin:** Week of January 8<sup>th</sup> through May 1<sup>st</sup>

**Celebration and Presentation of Best Practices:** Week of June 4<sup>th</sup>

**Each ECHO session includes professional development workshops focusing on subjects that make the biggest difference in graduation rates, including:**

### Career Readiness

- PBL
- Advisement in limited environments
- CTE themes - career options
- Work-based learning
- How to get & leverage business partners

### College Readiness

- Next Step Plan elements
- Acceleration - dual credit and advanced placement
- Using Khan for college readiness
- Special Ed and gifted
- Paying for college

### Teaching

- Collaboration within the school
- Teacher self care
- Resource review
- End of course exams
- Differentiated instruction & personalized learning

### Social Issues

- Foster care and emancipated students
- Alcohol and drugs
- Attendance interventions
- Behavioral interventions without suspension

**Case Based Learning:** an essential part of the ECHO for Education knowledge network’s Community of Practice including:

- Presentations of complex and disorienting dilemmas from the Spokes related to the school’s system of teaching and learning
- Presentations of a student or group of students facing barriers and challenges to building and reaching their goals and dreams and at risk of failing and dropping out.

### Partner Organizations:

- UNM Health Sciences Center
- UNM Health Sciences Center Office for Diversity
- CNM Advanced Technologies Center
- CNM Education Program
- Mission Graduate
- New Mexico Workforce Boards
- UNM STEM Collaborative Center
- State Superintendent’s Association
- PED Priority Schools Bureau
- NMSU Department of Engineering
- NMSU College of Education
- State Career Technical Student Organizations
- the NM Association of Career Technical Education (NMACTE)
- The Golden Apple Association
- The NM Board Certified Teachers Association
- The Apple Fellows
- Regional Education Collaborative
- Buck Institute for Education
- Project Lead the Way
- The College Board
- The NM Tech Council

***Participant surveys and needs for case based learning will drive topics.***