

# Required Appendix I

# SAHQ Academy

## SAHQ Academy Facilities Master Plan

April 25

# 2014

A rigorous, team-based academic schedule is the foundation of SAHQ Academy. We build relationships that maximize a student's emerging talent, energy and curiosity in an active, community centered facility. We prepare and expose students to careers in sports and health science and graduate productive members of a global economy who thrive under pressure, well prepared for higher education. SAHQ Academy draws on a student's love for sports to empower, motivate and inspire excellence in every aspect of their lives and expands their ability to solve complex problems. Success is learned.

Grades 8-12  
1404 Lead SE, ABQ  
Charlotte Rode  
505-440-6635  
[coachrode@comcast.net](mailto:coachrode@comcast.net)



# SAHQ Academy

## Charter School Overview

SAHQ Academy is a proposed charter school with an anticipated opening Fall of 2015, pending approval. We have reviewed the Statewide Adequacy Standards as well as the Charter variance.

## Acronyms/Definitions

SAHQ stands for Student Athlete Headquarters

Several unique terms are useful in understanding the innovative program proposed by SAHQ Academy.

**Blended Learning:** An innovative form of education that combines active, face-to-face learning and online instruction with technology based curriculum, producing learning data that is used to individualize the student experience.

**Digital Curriculum:** High quality, technology delivered courses that students can access with a computer or mobile device both on campus and away from campus as part of a customized educational plan. It integrates engaging instructional elements and multiple formative and summative assessments that produce ongoing data about student mastery of curriculum objectives, which are aligned to Common Core and NM Content Standards.

**Multi-Tiered Educational Plans:** SAHQ Academy will expose students to content on three levels. Foundational Knowledge will be obtained through a mastery based online curriculum, face-to-face instruction and tutoring. Applied Knowledge will be obtained through project based learning and Experiential Knowledge will be obtained through service learning, shadowing and internships.

**Sports Science:** The study of subjects such as nutrition, physiology and sports technology.

**Success Coach:** A carefully selected, specially trained to serve two critical face-to-face roles. Success coaches supervise teams of SAHQ Academy students while they are working on their online curriculum, and also provide day to day guidance and motivation regarding college preparation.

**Team Zone:** The seating area where SAHQ Academy students spend a portion of their on campus time, supervised by their Success Coach.



# SAHQ Academy

## 1. Goals / Mission

### a. 1.1.1 Describe the desired state of Schools educational programs.

A rigorous, team-based academic schedule is the foundation of SAHQ Academy. We build relationships that maximize a student's emerging talent, energy and curiosity in an active, community centered facility. We prepare and expose students to careers in sports and health science and graduate productive members of a global economy who thrive under pressure, well equipped for higher education. SAHQ academy draws on a student's love for sports to empower, motivate and inspire excellence in every aspect of their lives and expands their ability to solve complex problems. Success is learned.

SAHQ Academy will implement a cutting edge flex plus model of blended learning that uses high quality digital curriculum for all courses along with expertly trained, certified teachers who work with students in small groups both online and face-to-face. Each student's schedule and pathway through the program is personalized for his or her own learning needs based on a steady stream of performance data from the curriculum, with adapts to their needs and focuses their teachers' attention where it matters most.

SAHQ Academy will be an intentionally small school – 300 students maximum. SAHQ Academy will offer specialized instruction in Sports Science subjects such as nutrition, physiology and sports technology. In addition, SAHQ Academy features an integrated wellness program and athletic training with a Personal Trainer and onsite fitness center to help students optimize their physical well-being in support of all around success.

### b. 1.1.2 Describe the general educational philosophy

SAHQ Academy's philosophy is that students' academic success can be optimized through smart use of data and technology by expert, passionate teachers – both face to face and online – while their emotional success is supported by specially trained coaches in an innovative team environment. At SAHQ Academy, each and every student has a Personalized Learning Plan tailored to his or her particular learning requirements. This approach allows SAHQ Academy to be a fully inclusive school in which students receiving special education services, English Language Learners, accelerated learners and those in need of academic intervention are all equal members of the SAHQ family, tackling curriculum and interacting with their expertly trained teachers in the same ways as mainstream students. The flexibility for the curriculum and school environment means that any additional support services that such students need can be provided with a minimum of interruption to their overall, success-focused SAHQ Academy



# SAHQ Academy

routine. SAHQ Academy will provide an innovative, inspirational and individualized college-prep learning environment for students grades 8-12, maximizing their academic potential, engage their families and community, and prepare them for success in college, in work and in life.

SAHQ Academy will achieve this effect through a unique blended-learning program that combines the best of face to face and online professional instruction with a steady stream of real time academic performance data that tracks student's individual progress to optimize learning. While onsite and while away, student's will have access to their entire world-class, comprehensive online curriculum. Parent's will have 24/7 access to student performance data, thereby stimulating essential family involvement. The guiding philosophy for school culture at SAHQ Academy is flexibility and individualization in exchange for personal accountability in a high expectations environment. The highly flexible, expandable and interactive program accommodates varying learning styles and facilitates differentiated instruction techniques.

At their unique SAHQ Academy Campus, students will be guided by a dedicated staff that includes a Principal, a Guidance Counselor, a Special Education Coordinator and a School Secretary, as well as the following on site-instructional team.

- **Highly qualified teachers**, who rather than delivering a one size fits all curriculum, instead work with students individually and in small groups to intervene and accelerate based on their performance data from the curriculum.
- **Success Coaches**, specially selected and trained to play a dual instructional support and guidance support roles for SAHQ Academy. Success Coaches supervise teams of SAHQ Academy students while they are working in their online curriculum, and also provide day to day motivation regarding academic goals and college preparation.
- **Personal Trainers** who facilitate the use of the on site fitness center, provides sports specific training, helps to coordinate applied aspects of the Sports Science program, and develops individual plans for fitness and lifelong wellness. The personal trainers also coordinate the healthy snacks program that provides fresh fruit and healthy snacks for free to all students.

SAHQ Academy hopes to locate at 1404 Lead Ave. SE in Albuquerque, sharing a facility that already serves as home to a unique community youth fitness center. The SAHQ Academy campus will provide an intimate, innovative and flexible environment unlike any traditional high school but ideally suited for the blended learning approach with a sports science focus. Our Steering Committee has not approached Albuquerque Public Schools for space in a district facility for the school because the target location so well suits SAHQ Academy's unique educational focus.



# SAHQ Academy

**c. 1.1.3 Describe the desired interaction with the school's community**

Our school community consists of our students and staff, their families, our supporters and the community at large. Our decision making is centered on improving student's academic performance and maximizing exposure to a healthy lifestyle. We hope to locate at 1404 Lead SE, a space that is walking distance to CNM, UNM and adjacent to Presbyterian Hospital and professional offices. We will partner with these institutions to the greatest degree possible. The facility itself will provide a variety of active, learning environments, nutrition education and access to healthy snacks, and an integrated fitness program.

To provide the broadest possible opportunities for our students, SAHQ Academy will pursue partnerships with additional higher education institutions for dual enrollment and college planning opportunities as well as developing alliances with local community sports and nutrition programs.

**d. 1.2 .1 Describe the process for data gathering and analysis**

The process for data gathering and analysis relates specifically to our desired location at 1404 Lead SE. PSFA has already visited our proposed location and are awaiting a copy of the assessment. As soon as the information is available, the steering committee will meet to discuss improvements that can be made immediately and those that will be included in our 18 month plan.

With high quality curriculum and strong accountability measures integrated throughout the SAHQ Academy program, student's academic success is consistently monitored, evaluated and a point of focus for all the stakeholders - parents, students and administrators. The school's performance will be measured and communicated continuously to parents and reported monthly to its Governing Board.

Additionally, the Governing Board is responsible for ensuring that all aspects of the financial and programmatic accountability systems fulfill SAHQ Academy's obligations to its authorizer. Specific plans for monitoring and reporting on the effectiveness of curriculum, instructional methods and practices during year 1 include:

**Student Achievement.** One of the important measures of accountability will be student achievement. SAHQ Academy will measure student achievement through a number of lenses: measurable learning gains, performance on the state standardized tests, progress towards graduation and performance on SAT, ACT and AP exams.



# SAHQ Academy

**Parent/Student Satisfaction.** SAHQ Academy families will be included in communications loops to ensure timely and productive feedback. We will also conduct a survey at least annually to obtain objective, measureable data. This information will be reported to the Governing Board and all stakeholders.

**Compliance with state law.** The school will measure itself against compliance with NM state law regarding public education, charter schools specifically under the Charter School Act, 2011 NMSA 1978 (unannotated)/Chapter 22 Public Schools/ Article 8B Charter Schools and other objective compliance criteria. The compliance will include the timely and accurate reporting of required state data.

**Fiscal Accountability.** The school is fully committed to fiscal accountability. Its budget reflects its commitment to cost control, responsible growth and regular audits.

**e. 1.2.2 Identify individuals representing the school authorized as contact on issues and questions relating to this submission**

Contact : Charlotte Rode [coachrode@comcast.net](mailto:coachrode@comcast.net) 505-440-6635

**Identify processes for capital planning and decision making**

The Governing Board of the charter school is responsible for overall capital planning and decision-making, with guidance and input from the Principal and the staff leadership team once those individuals are in place. The SAHQ Academy GB will meet regularly in open, public meetings to fulfill its duties, and may from time to time create subcommittees or task forces to carry out special tasks. Special or emergency meetings shall be held as needed. All meetings involving a quorum of the Governing Board shall be noticed and conducted in accordance with the Open Meetings Act. The Governing Board shall keep written or digital or tape recorded minutes of all its meetings.

The SAHQ Academy Governing Board is ultimately responsible for the overall financial management of the school. The Board will designate one of its members to serve as the Treasurer of the school. The individual will have a financial background to enable him/her to perform this function. The Treasurer and the entire Governing Board will participate in regular board training with an emphasis on fiscal management and oversight and will ensure that the school's Business Manager participates in district and NM PED charter school training, when appropriate. SAHQ Academy will follow detailed fiscal procedures, which comply with Generally Accepted Accounting Principles (GAAP) and will ensure sound financial management.

The school will begin the annual budgetary process each February with an enrollment target set by the Governing Board. The school's Business Manager will coordinate the



# SAHQ Academy

development of revenue and expenditure assumptions based upon this enrollment target. This will be a very iterative process and involve the appropriate stakeholders – Business Manager, Governing Board, Principal, teachers and others. Once an initial budget based on planned events has been drafted, it will be tested against a lower enrollment level to ensure the school can withstand a lower than expected enrollment. As more information is learned, assumptions will be revised and the impact discussed with the Governing Board. SAHQ Academy follows a detailed annual budget development process.

- Starts in February with Board, by setting the enrollment target for the coming year and discussing key assumptions such as staff compensation and new initiatives, and confirming per pupil funding rates (regular education, special education, add ons)
- SAHQ Academy Business Manager develops a draft budget through a very iterative process, including a financial narrative that explains all the key assumptions and results.
- The Board designates individual(s) to review the draft budget and narrative through conference calls and in person meetings
- SAHQ Academy Business Manager presents the revised draft budget to the Board for adoption
- SAHQ Academy Business Manager will revise the budget at start of school, reflecting updating of key assumptions like enrollment and actual salaries, and the Board may elect to adopt this revised budget as its official school budget for the year.

## **Identify how community input is considered.**

The proposed location of SAHQ Academy, 1404 Lead SE, has been a focus of community involvement. The facility serves as a community center and event space, hosting meetings for local schools and charters, neighborhood associations, sports teams, educational camps and others. Building on this community interest, SAHQ Academy will soon begin offering multiple information sessions about the school, in person and online, for families and community members. SAHQ Academy will use these sessions to provide a complete array of information about its program and solicit feedback about the different ways parents and community can get involved.

In addition, SAHQ Academy will develop an ongoing partnership dialog with local businesses and other organizations – such as non profits and advocacy groups – regarding community service opportunities, internships and mentorships for students. We have discussed with APS about roles the school and its facility can play in supporting district initiatives such as the APS homeless sports program.

The Governing Board also provides a venue for community and parent input. In addition to ensuring community representation on the Board, the Board may create ad hoc



# SAHQ Academy

community advisory groups to provide guidance on particular subjects such as local partnerships and neighborhood outreach. Community members who are not Board Members are also encouraged to be involved with Board activities; contact and other information about the Board will be available to families and the public on request and will report on Board activities in the school newsletter.

## **Identify members of the Steering Committee**

The Steering Committee consists of volunteers who have a passion for kids and education. It includes parents, educators, coaches and community members. Currently, the committee consists of:

George MacAfee (Science teacher, Sandia) , Ed Bacallini (SS Abq. Academy), Dave Koverik (History St.Pius), Lindsey Kerwin (Math and AD), Mike Madonia (Sandia Labs), Lareylle Cunningham (Police, coach), Charlotte Rode (Coach)

## **2. Projected Conditions**

### **a. 2.1.1 Provide overview of proposed educational programs and facilities.**

SAHQ Academy will combine open spaces with comfortable seating and multiple work surfaces with technology enhanced classrooms. Our proposed education model calls for a blended learning environment. The facility will accommodate the student's need for online access to curriculum, independent study, small group class work, projects, large group presentations and athletic training. Open spaces provide clear sightlines and open work areas allow staff to maintain visual contact with the students at all times while classrooms allow teachers to openly discuss material without creating a distraction. The special curriculum strand focusing on Sports Science along with the onsite fitness center staffed with a personal trainer, plus ubiquitous access to healthy snacks, promote student wellness and focus.

### **Identify and describe any potential shared/joint use facilities with public or private entities.**

SAHQ Academy intends to share the 1404 Lead Ave. SE location with the Student Athlete Headquarters, a community based, non profit youth fitness organization. SAHQ Academy will collaborate with the Student Athlete Headquarters to provide the school fitness center and extend the schools overall wellness s and Sports Science program.

### **Describe the school's proposed instructional program.**

The SAHQ Academy educational program is built around each student, with the daily routine driven by data about his or her learning and activities designed to maximize both academic performance and social/emotional growth. Key elements include:



# SAHQ Academy

- **Engaging technology facilitated curriculum:** SAHQ Academy will use high quality curriculum that has a proven record of success and produces strong academic results. Throughout the flexible school day and beyond, students can access their curriculum which allows them to work anywhere, anytime within the school campus and beyond – and produce a rich stream of learning data to guide every instructional decision.
- **Blended instructional model:** As part of its flex approach to blended learning, SAHQ Academy combines the best of face to face and online teaching to maximize the impact of its highly qualified teachers. The school's face to face teachers work in small groups on a schedule determined by their data documented learning needs.
- **Data powered instruction with dynamic differentiation:** As student's work through their engaging online curriculum, they generate rich streams of performance data the school's professional, certified teachers use to maximize student's performance. Teachers use data on students performance to dynamically group students for intervention, enrichment, project work and individual study. Student's meet with their teachers individually and in small groups multiple times per week and are supported in their drive for academic excellence by their Success Coaches.
- **Personalized learning plan:** Developed collaboratively for each student by the staff with input from parents and students, this plan guides the tailoring of both curriculum and in instruction to meet the student's needs. Special attention will be paid to meeting needs of students with disabilities and English Language Learners, whose Personalized Learning Plans will reflect necessary modifications and accommodations but who are otherwise fully integrated into the daily learning routines of the school.
- **Flexible Use of Space and time:** Rather than rows of forward facing desks and teacher lectures, the SAHQ Academy blended campus provides a combination of comfortable Team zones and inspiring subject specific classrooms where students and teachers meet in small groups and one on one to engage in active learning. The school day maximizes flexibility so the students who need more intensive intervention and direct instruction will get it, while the students who are ready to move ahead can do so. SAHQ Academy also allows time and space for special focus on elite sports, community service, college courses, internships and family obligations.



# SAHQ Academy

- **Small school design:** SAHQ Academy is small by design, serving up to 300 students. Recent research on small schools shows significant positive impact on graduation rates when the personalization of an intimate learning environment is coupled with a strong mission focus and careful attention to continuous program improvement through the use of performance data.
- **Active bodies, active minds – fit bodies, fit minds:** SAHQ Academy is dedicated to the proposition that exercise helps ensure academic and emotional success for students while laying the foundation for lifelong health – and combating the obesity challenges facing many New Mexico youth. Neuroscience research suggests that exercise improves memory functions and relieves symptoms of depression. The SAHQ Academy campus has an on sit fitness center provided through collaboration with Student Athlete Headquarters and staffed by a dedicated Personal Trainer who ensures an exercise plan for every student while bringing in a rich array of fitness options from yoga to sports specific skills work.
- **A coach for every student:** In addition to highly qualified teachers in every subject, SAHQ Academy will work with specially trained Success Coaches. These Success Coaches deepen and extend the school experience by focusing on the student’s individualized learning needs and ensuring the right mix of motivation and accountability.
- **Expanded learning opportunities:** Students seeking academic rigor and an engaging curriculum that allows able students to move forward at their own pace find both at SAHQ Academy. Beyond the individual enrichment provided by the face to face highly qualified teachers, the SAHQ Academy schedule permits students to participate in internships, pursue athletic passions and take college courses.
- **College preparation:** Students at SAHQ Academy receive individualized and intensive guidance counseling focused on their pathway to college. At the SAHQ Academy blended school, the Guidance Counselor’s work is reinforced by the Success Coaches who work closely with the students to ensure that they are considering all of their college options – often through the lens of career interests – and planning properly the coursework and exams they will need to complete to reach their goal. As noted above, the curriculum offers a wide array of options including the ability to add college courses to the schedule.



# SAHQ Academy

## **Describe the general instructional organization (grade levels, groups, academies)**

SAHQ Academy will be a school serving grades 8-12, with a defined progression toward high school graduation and college admission and with multiple opportunities to accelerate toward or exceed those requirements. Students spend part of their on-campus time in cross grade Team Zones, where they work on their individualized learning program and complete their own schedule of online classes side by side with students from different grade levels in different courses. Within the Team Zones, clusters of students can collaborate on projects. For face to face instruction, students are dynamically grouped based on their performance in the curriculum and their specific learning needs.

## **Describe scheduling approach (periods, block schedule)**

SAHQ Academy offers a flexible, non traditional schedule that optimizes face to face, online and personal training while fulfilling and likely exceeding the required 1080 annual hours of school directed programming. A student's daily schedule will be structured to meet his or her individual needs year round. During the regular school year, classes and training will be conducted from 7am-5pm Monday – Friday, divided into five two hour blocks and 9-12 Saturdays. A student's day will include physical training, advisory, online coursework and face to face instruction. Although the programming is flexible, those students falling behind on lesson completion or otherwise struggling will be required to spend additional time on campus.

## **List anticipated special curricular and extracurricular activities to be accommodated in the facility, if any.**

The Sports Science overlay at SAHQ Academy adds an important dimension to the instructional organization of the school. All SAHQ Academy students will participate in foundational Sports Science activities, including at least one college/dual credit course, career exploration and a personal fitness plan. Students then have the opportunity to pursue several specialized Sports Science tracks with additional electives, college courses and internship opportunities.

### **2.2.1 Indicate proposed enrollment cap**

SAHQ Academy will have a maximum enrollment of 300 students and expects to launch with 100 students in grades 8-10 in the fall of 2015.



# SAHQ Academy

## 2.2.2 Describe any plans for phased enrollment

Year	8 <sup>th</sup>	9 <sup>th</sup>	10 <sup>th</sup>	11 <sup>th</sup>	12 <sup>th</sup>	Total
1	50	25	25			100
2	50	50	25	25		150
3	50	50	50	25	25	200
4	50	50	50	50	25	225
5	50	50	50	50	50	250

## 2.2.4 Identify anticipated class loading requirements or district policy

Based on SAHQ Academy's innovative use of space and time, the following loads are expected per room:

- **Classrooms:** Each subject classroom will serve students in groups of no more than 25, much more typically the group size will vary from 5-15 students. Class periods are typically 30 minutes and are focused on small group instruction, remediation and acceleration.
- **Team Zones:** These are not enclosed classrooms but rather semi enclosed seating areas that must accommodate up to 35 students and a success coach.

## 2.2.5 Identify anticipated classroom needs, including number of classrooms to accommodate the projected enrollment. Provide supporting analysis.

- **Classrooms:** Each core subject will have a dedicated classroom. Math, Science, English and Social Studies. ( 400-500 square feet each )
- **Team zones:** There will be four team zones. ( 800-1000 square feet each )



# SAHQ Academy

Itemize the quantity and sizes of other spaces required to accommodate the instructional program.

In addition to the classrooms and Team Zones described above, SAHQ Academy will require:

- A sports science / athletic training room (400-500 square feet)
- Film room ( 400-500 square feet )
- Yoga room (400-500 square feet)
- Conference room for meetings and small group studies (200-300 square feet)
- Reception office and snack bar for healthy snacks ( 200-300 square feet )
- Principal and guidance counselor offices (150 square feet each)
- Fitness gym ( 4000 square feet )
- Kitchen – nutrition classroom and juice bar (1000 square feet)
- Restrooms 6 bathrooms, 3 male and 3 female (800 square feet)
- Cleaning room ( 50 square feet )
- Maintenance room ( 150 square feet )
- Data Room (300 square feet )
- Storage areas, including secure fireproof storage for student records (700 sq. feet)
- If E-occupancy can be obtained for the second floor, we will utilize the Auditorium space and basketball court (8000 square feet)

## 2.3.1 Include Maps which identify the location of any existing and proposed facilities





# SAHQ Academy

Provide a description of sites and facilities, existing or proposed

A description of 1404 Lead Ave. SE is shown below

## PROPERTY PROFILE

<b>Project:</b>	Calvary Christian Academy Campus Property
<b>Location:</b>	Outlying University area 1404 Lead Avenue S.E. Albuquerque, New Mexico
<b>Land Area:</b>	1.3774 +/- Acres
<b>Legal Description:</b>	Lots 2 - 6 and Lots 8 - 10, 044 Terrace Addition
<b>Zoning:</b>	SU-2 SU-1 for Church & Related Facilities, City of Albuquerque
<b>Building SF:</b>	+/-27,120 SF Total
<b># of Stories:</b>	3 Levels
<b>Proposed Property Split:</b>	(1) 16,500+/- SF Bldg Wing (3-story portion w/ sanctuary) sitting on approx. 24,150 SF of land fronting along Lead Avenue  (2) 10,600+/- Bldg Wing (1-story portion w/ 10 classrooms) sitting on approx. 35,850 SF of land fronting along Coal Avenue
<b>Year Built:</b>	1960s - Year of Construction being verified
<b>Type of Construction:</b>	Combination of block and brick construction
<b># of Parking Spaces:</b>	55 on-site parking spaces with additional off-site parking available on Sycamore & Maple Streets
<b>Additional Points:</b>	<ul style="list-style-type: none"><li>• Well established church school property positioned in the South I-25 Corridor in close proximity to Presbyterian Main Hospital, the University of New Mexico campus and Downtown Albuquerque</li><li>• Excellent opportunity for another church and/or school to establish roots in a centrally located area with close freeway accessibility</li><li>• Property also lends itself well to a variety of mixed use redevelopment options including office, non-profits, daycare, medical office and residential</li></ul>



# SAHQ Academy

## **2.3.4 Provide a summary of the facility condition evaluation**

PFSA evaluated the facility for SAHQ Academy on 4/3/14. We have not received the report as of 4/24/14.

## **3. Facility Requirements**

### **3.1.1 Outline your plan for being in a public building by 2015 in compliance with HB-283**

The building is currently owned by a non-profit whose purpose is to support the school. HB-283, Section 2.D.2.b.2

### **3.1.2 Identify and describe major facility goals and concepts including safety, security, sustainability, flexibility, community use, utilities, and any other issues or special considerations that impact space requirements and/or costs**

As described above, the innovative SAHQ Academy campus design invites students to move freely but work hard. With an open, active floor plan, comfortable seating options, multiple work surfaces, the campus combines elements of a college lounge with the latest in technology-enhanced school design.

An open “white box” space is ideal as a starting place for the SAHQ Academy build out. Achieving this open state often requires demolition of traditional classrooms and walls.

The SAHQ Academy design does require sufficient electrical and wireless internet coverage for a large number of students and staff to be working online simultaneously without slowness or interruption.

SAHQ Academy provides a secure learning environment by ensuring clear sightlines and open work areas throughout the space, as opposed to closed offices and hallways, allowing staff to maintain visual contact with the students at all times. We hope to have a key card access point to serve as both a security measure as well as an attendance verification system.

### **3.2.1 Space summary**

The e campus SAHQ Academy campus requires about 15,000 square feet of space, including the fitness center. If e-occupancy can be achieved for the upstairs, the auditorium, basketball court, entry and reception will add an additional 10,000 square feet. These additional spaces will provide additional learning space as well as enhance our academic programs.



# SAHQ Academy

## 4. Capital Plan

Build out of the SAHQ Academy floor plan at 1404 Lead Ave. SE will require the following renovations and improvements.

- Demo of walls to create open space
- Construction of window walls for classrooms
- Construction of half walls for team rooms
- Finishes and built ins
- Any necessary improvements in mechanical and electrical systems
- Any necessary improvements in internet access
- Possible installation of a lift or other measures to address accessibility if using more than one floor

The Steering Committee is currently assessing the costs involved in achieving this build out. A follow up can be made after we receive the PSFA evaluation and are able to get cost estimates from an architect and contractor.

Beyond the goodwill of our benefactors, we are researching grants to assist in the implementation of our capital plans.



# SAHQ Academy

Name of facility	1404 Lead Ave SE (formerly Calvary Christian Academy)
State Identification number	To be determined
Physical Address	1404 Lead Ave. SE, Albuquerque, NM
Date of opening	March 2015 ( six months before school start date – facility open for enrollment and community engagement)
Dates of major additions and renovations	Renovations (consisting of simple wall removal and open space finishing ) Dec.2014-Feb.2015
Facility Condition Index and NM Facility Condition Index, if available	Not yet available
Site owned or leased	Owned by non profit
Total Building square gross ft.	15,000 square feet on one level, Coal Ave. elevation. Additional 12,000 square feet on Lead Ave. elevation.
Site acreage	1.37 acres
Total number of permanent general classrooms	4 classrooms
Total number of permanent specialty classrooms	4 Team zones 1 Sports science / Training room 1 Yoga room 1 Film room 1 fitness area Possible auditorium and basketball court
Total number of portable classrooms	0
Total number of classrooms	12 – 14
% of Portable – permanent classrooms	Not applicable
Total enrolment	Cap of 300 students
Number of gross square feet per student	15,000 square feet - 50 sq ft. per student

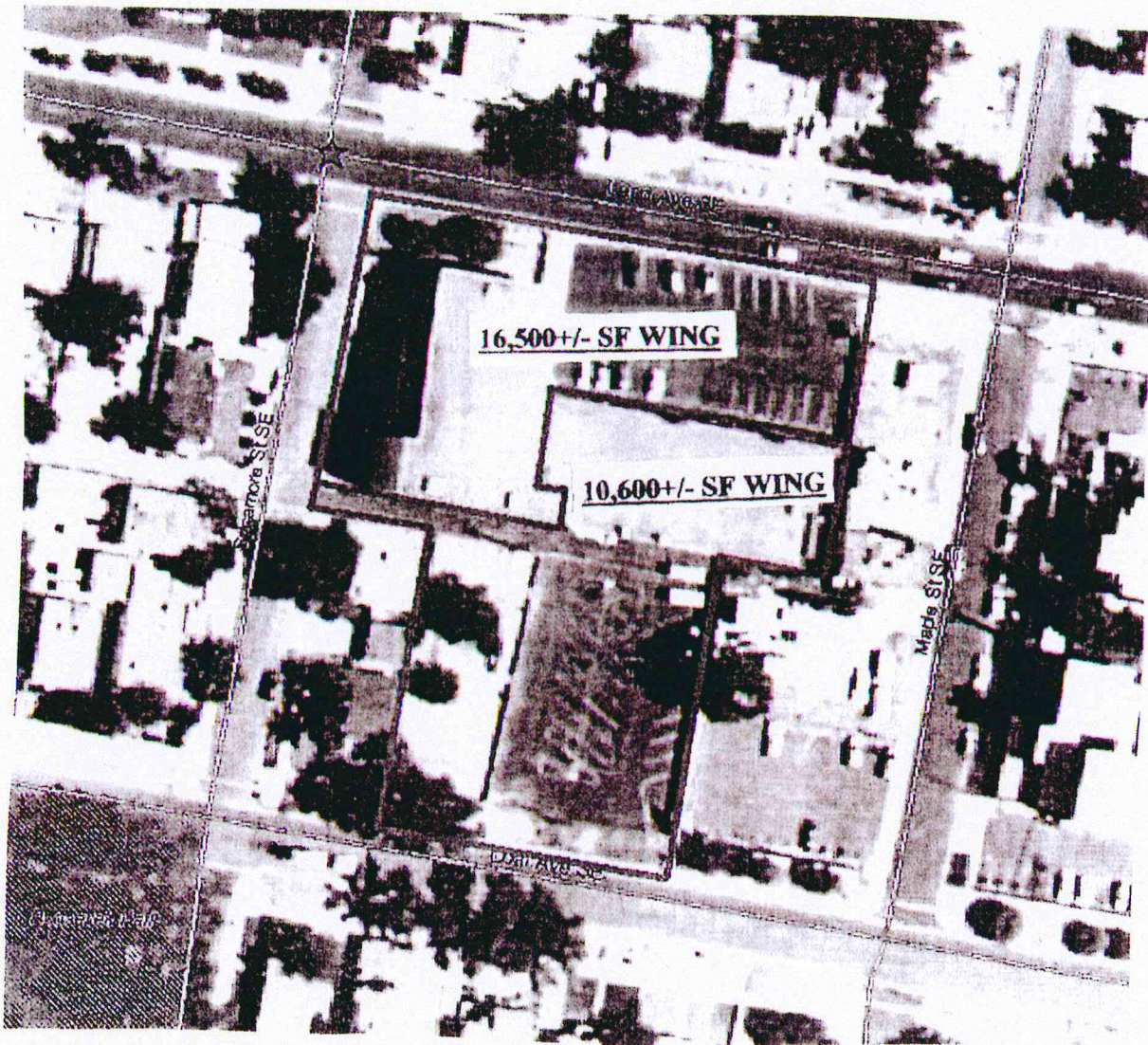


# SAHQ Academy

per school facility	27,000 square feet - 90 sq. ft per student
---------------------	--------------------------------------------

## 5.2 Sealed school site plan

The site plan below shows 1404 Lead Ave. SE in context, including parking lots and off-road drop off and pick up areas.

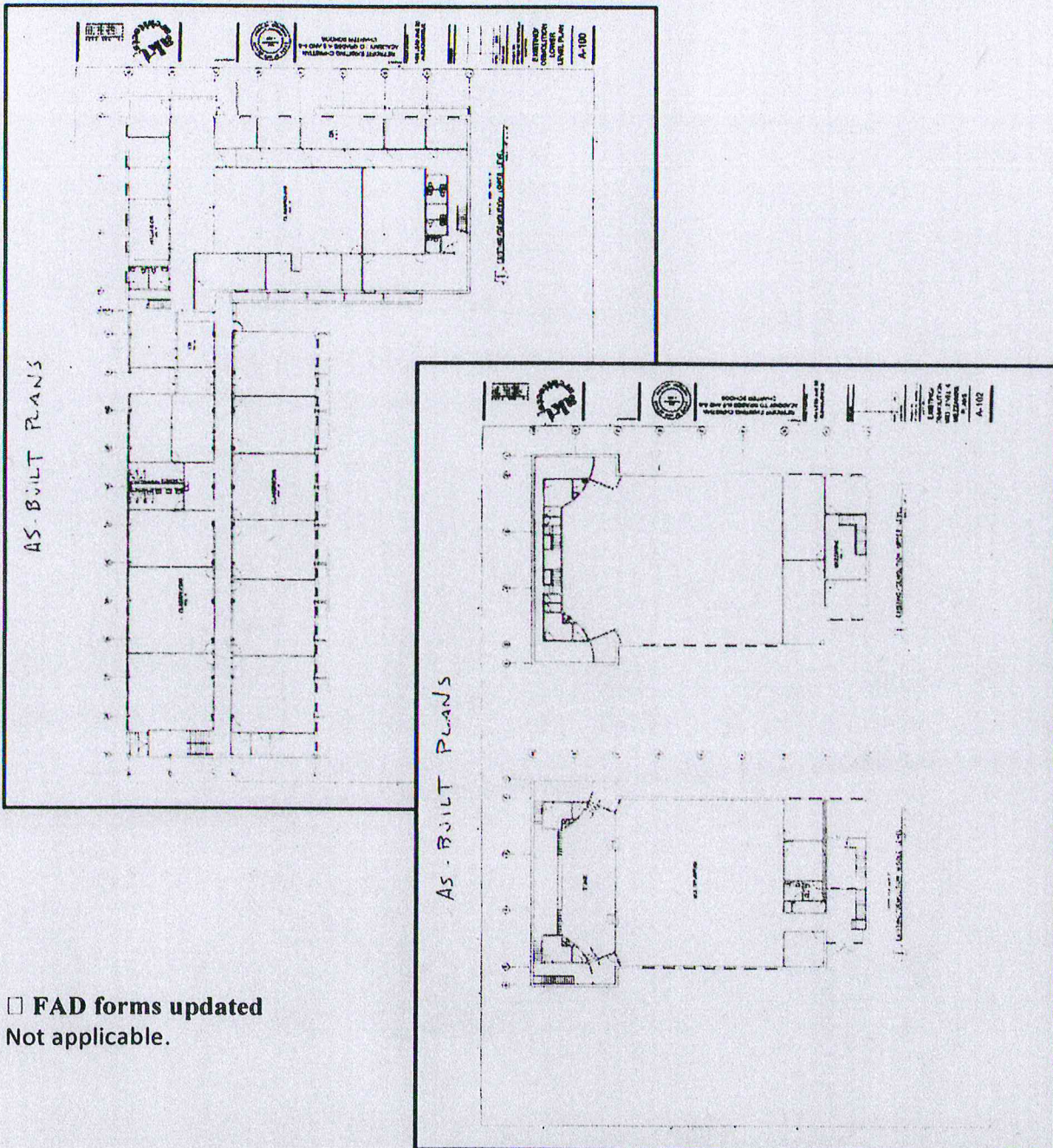




# SAHQ Academy

## 5.3 Scaled school floor plans with room numbers to match inventory

The as built plans for 1404 Lead Ave SE are shown below. A specific scaled floor plan for SAHQ Academy at 1404 Lead Ave. SE is in development.





# SAHQ Academy

## **5.8 Detailed space and rooms requirements, if applicable.**

See specifications below for the SAHQ Academy model

### **5.8.1 Technology and Communications Criteria**

SAHQ Academy provides cutting edge virtual curriculum using state of the art technology, data servers, utilizing bandwidth capacity of 30 megabytes per second.

### **5.8.2 Power criteria**

We utilize standard power in all areas of the school, with the exception of the fitness center and kitchen which may require additional power for treadmills, exercise bikes, appliances etc. However we will not require more power than is available at the facility.

### **5.8.3 Lighting and day lighting criteria**

SAHQ Academy understands the benefits of natural, well lit spaces. We incorporate a mixture of natural light, indirect lighting and artificial lighting techniques to provide sufficient lighting to all spaces within the school to insure a healthy facility.

### **5.8.4 Environmental conditioning criteria**

No specific criteria

### **5.8.6 Furnishings and equipment criteria**

The SAHQ Academy furniture package will be designed to accommodate an active learning environment. With high study tables, low study tables, study lounges, semi-private cubicles and a wealth of open space for collaborative learning opportunities, we are able to accommodate various learning styles and studying habits. We even have standing study counters for those students who do not wish to sit down at all. Our equipment package will complement our desire to provide an excellent learning space for young adults. State of the art technology, accessories and audio / visual equipment, provides access to learning for all students.

### **5.8.7 Table types**

SAHQ Academy will offer table types that are customized for their function. High tables and chairs for collaborative learning and studying opportunities and low tables for those wanting a more conventional and intimate seating height.

### **5.8.8 Storage types**

SAHQ Academy will be equipped with one main storage room as well as smaller storage closets.

### **5.8.9 Criteria sheets – N/A**



SAHQ Academy FMP-Ed Spec PSFA appr letter  
May 5, 2014

Good Morning Ms. Rode,

PSFA has received and reviewed the Facility Master Plan/Educational Specification's (FMP/Ed Spec's) for SAHQ Academy. The FMP/Ed Spec's purpose is to guide you in the planning of and/or selection of a facility to ensure that it is adequate to accommodate your educational program and method of instruction. Based upon our review, PSFA is pleased to announce that the Plan meets our requirements. In accordance with House Bill 283, your next step is to submit your charter school application to the New Mexico Public Education Department (PED) and include your plan. I have attached the PSFA letter above. Please let me know if you have any questions or desire additional information.

Sincerely,

William W. Sprick (Bill)



**William W. Sprick | Facilities Master Planner**  
**Public School Facilities Authority**  
**1312 Basehart Road, SE Suite 200 | Albuquerque, NM 87106**  
**Phone: 505-468-0282 | Cell: 505-715-3863 | Fax: 505-843-9681**  
**E-mail: [bsprick@nmpsfa.org](mailto:bsprick@nmpsfa.org) | Web: [www.nmpsfa.org](http://www.nmpsfa.org)**



## STUDENT ATHLETE HEADQUARTERS

May 3, 2014

Mr. Kizito Wijenje  
Albuquerque Public Schools  
Executive Director, Capital Master Plan

Mr. Wijenje,

I am writing to request a list of facilities that might be made available to our proposed charter school. SAHQ Academy has submitted a letter of intent to serve grades 8-12 in Albuquerque beginning the fall of 2015 with a student body cap of 300. We are a college prep high school with a focus on sports science. Our blended curriculum will require both classroom space and a large, open computer lab. In order to fulfill our mission, we will also need access to adequate sports training space and a kitchen for nutrition studies.

Our community based charter school has the following needs:

- Located near CNM (preferably with easy freeway access)
- 6-10 classrooms (400-600 square feet)
- Large open academic space (3000 - 4000 square feet)
- Large open gym space with high ceilings (5000+ square feet)
- Basketball court with high ceilings
- Kitchen
- High speed internet access
- On bus route
- Adequate administrative space and storage
- Green space or nearby park

Please forward your reply to Charlotte Rode, [coachrode@comcast.net](mailto:coachrode@comcast.net).

Thank you for your time and assistance,

Charlotte Rode  
1409 California NE  
Albuquerque, NM 87110  
505-440-6635

1404 Lead Ave. SE  
Albuquerque, NM 87110  
1/2 mile east of I-25 on Coal

Phone: 505-440-6635  
505-463-6554  
E-mail: [info@sahq.org](mailto:info@sahq.org)  
[www.sahq.org](http://www.sahq.org)



If it doesn't challenge you,  
It won't change you.



APS Response to facility inquiry.

Mr. Tolley (Copied) from the Charter School Office is actually the most appropriate person to talk to you at this time. Finding suitable commercial rental property in the area indicated not already owned by UNM or CNM will be next to impossible. Finding rental property ANYWHERE in the greater metropolitan area that matches your technical/educational requirements is just not possible. Please see the rough preliminary cost/benefit analysis for a facility based on your specifications;

<b>Rough Cost/Benefit Analysis for Housing Proposed SAHQ Charter School</b>					
	<b>Square Feet</b>	<b>Construction Cost*</b>	<b>Rental Cost (per month)*</b>		
10 Class rooms	8400	\$ 2,184,000.00	\$ 9,240.00		
Multi-purpose	4000	\$ 1,040,000.00	\$ 4,400.00		
Gym/Court	8000	\$ 2,080,000.00	\$ 8,800.00		
Kitchen/cafeteria	5000	\$ 1,450,000.00	\$ 5,500.00		
Admin	2500	\$ 650,000.00	\$ 2,750.00		
Tare/Bathrooms	3000	\$ 780,000.00	\$ 3,300.00		
Storage	1500	\$ 390,000.00	\$ 1,650.00		
<b>Total</b>	<b>32400</b>	<b>\$ 8,424,000.00</b>	<b>\$ 35,640.00</b>	<b>***</b>	
*Rental costs DO NOT include cost of bringing up to educational adequacy, furnishings and equipment					
Costs for monthly utilities are separate					
**Construction costs DO NOT include costs for real estate acquisition (Minimal 5 acres to accommodate)					
***State lease reimbursement for 300 students is approximately <b>\$210,000</b> a year. Balance of rent					

Kizito Wijenje, AICP  
 Executive Director, Capital Master Plan  
 Albuquerque Public Schools  
 Capital Master Plan Department  
 Lincoln Building 2nd Floor Suit #9  
 915 Locust Street SE 87106  
 P.O. Box 25704  
 Albuquerque, NM 87125-0704  
 E-mail: [wijenje@aps.edu](mailto:wijenje@aps.edu)  
 Web Site: <http://www.apsfacilities.org/>  
 Fax: 505-848-8824  
 Phone: 505-848-8875