

Required Appendix I



STATE OF NEW MEXICO
Public School Facilities Authority

Robert A. Gorrell
Director

☐ originating office
Santa Fe Main Office
410 Don Gaspar Ave
Santa Fe, NM 87501
Telephone: 505-988-5989
Facsimile: 505-988-5933

May 12, 2015

☒ originating office
Albuquerque Field Office
1312 Basehart SE, Suite 200
Albuquerque, NM 87106
Telephone: 505-843-6272
Facsimile: 505-843-9681

Ms. Janet Devesty
1776 Montano Rd. NW
Los Ranchos, NM 87107

Dear: Ms. Devesty,

PSFA has received and reviewed the Facility Master Plan/Educational Specification's (FMP/Ed Spec's) for the New Mexico Gateway Academy located in Los Ranchos. The FMP/Ed Spec's purpose is to guide you in the planning of and/or selection of a facility to ensure that it is adequate to accommodate your educational program and method of instruction. Based upon our review, PSFA is pleased to announce that the Plan meets our requirements. In accordance with House Bill 283, your next step is to submit your charter school application to the New Mexico Public Education Department (PED) and include your plan.

Through our review of the FMP/Ed Spec's, PSFA understands the following:

- NM Gateway Academy did request to locate in existing Albuquerque Public Schools facilities on May 11, 2015. As of yet, there has been no response from at APS.
- The school anticipates having a total enrollment of 1,500 students.
- Facility requires 11 classrooms
- 4,363 gross square feet is required to meet School's educational program
- Grades: K thru 12th grades
- You have reviewed our adequacy standards, planning guide and HB 283

If you are a successful applicant, please remember to work closely with PSFA's Planning and Design team as you review potential facilities. You can reach us at (505) 468-0282.

Sincerely,

William W. Sprick,
Facility Master Planner

cc: Jeremy Jerge, Regional Manager
Martica Casias, Planning and Design Manager



State-Authorized Charter School Applicant Facilities Master Plan/Educational Specifications Checklist

State-authorized charter school applicants are required to submit a facility master plan/educational specifications combination document to PSFA. This document must be prepared in the following format:

- ☐ Final copy placed in a three-ring binder
- ☐ Labeled tabs
- ☐ Include the written request as well as any response received regarding your request to locate in existing district facilities

The document must include the following information:

CHARTER SCHOOL OVERVIEW

- ☐ Include the written request as well as any response received regarding your request to locate in existing district facilities

At present, New Mexico Gateway Academy (NMGA) has chosen the Unser Discovery Campus in Albuquerque as our flagship facility. Our Facilities and Capital Planning Committee will be reviewing facilities for future growth.

- ☐ Indicate year of the application: 2015
- ☐ Charter School cap: 1500
- ☐ Include statement acknowledging review of:
 - Statewide Adequacy Standards NMAC 6.27.30

The Statewide Adequacy Standards NMAC 6.27.30 have been reviewed by the applicant team.

- **Charter-Alternative School Statewide Adequacy Standard Variance**

The Charter-Alternative School Statewide Adequacy Standard Variance has been reviewed by the applicant team.

1. GOALS / MISSION

1.1 Goals

1.1.1 Mission

- **Describe the desired state of school’s educational programs**

The mission of NMGA is to provide a powerful model of effective public education that meets the individual needs of its grades K-12 students. NMGA will enable, inspire, and prepare students to achieve high academic standards in support of their individual goals and path in life. The vision of NMGA is that it will utilize an enriched online learning environment; a comprehensive curriculum offering with a CTE focus delivered on and offline; targeted instructional support by experienced teachers working in conjunction with learning coaches; and extended support services and community partnerships to boost student achievement and ensure school accountability. NMGA students will stay engaged in the academic process, graduate from high school, and make a powerful impact in their communities. Upon graduation, students will be prepared to continue their post-secondary education or go directly into the work force.

1.1.2 Briefly describe the general educational philosophy

NMGA will be a virtual charter school with a focus on preparing each student to be college and/or career ready. In addition, we will provide a consistent K-12 educational program available to all New Mexico students, providing and maintaining acceptable New Mexico standards in a sequenced curriculum that will equip students with the foundational academic and technical skills they will need to pursue post-secondary education, achieve occupational certifications, or enter directly into the work force.

The NMGA will be a full-time, online charter school that delivers a sequential program of both synchronous and asynchronous instruction from teachers to students primarily through the use of technology via the Internet in a virtual or remote setting. NMGA will provide a Career Pathways program or Career and Technical Education (CTE) program providing students with vocational and career readiness while achieving high academic performance that meets the rigorous New Mexico Content Standards and the New Mexico Common Core State Standards. NMGA will prepare students for college, career, and citizenship by providing them with the vision, motivation, and the practical and technical skills they need in a

rapidly changing workplace and society.

1.1.3 Serving the community

□ Describe the desired interaction with school's community

NMGA plans on developing a strong sense of “community” among our students and families. Throughout the year, students will be invited to participate in school outings, field trips (e.g., to historical sites, museums, zoos), picnics, and other social events. We expect local clusters of students and parents to get together on a regular basis in their areas. We will also explore new ways to interact socially using the powerful reach of the Internet. With online discussions and forums, new types of communities can be formed that are based not on geography and place but on shared interests.

NMGA is currently working to develop relationships with businesses, educational institutions, organizations, and associations throughout New Mexico to foster relationships between the school and greater community. This is a process that will continue as our school staff works with business and industry leaders to identify the job market and needs of employers throughout the state. Initially we will open a campus in Albuquerque to serve the greater Albuquerque and surrounding areas. We will work closely with New Mexico State University, Clovis Community College, University of New Mexico, Highlands University, Central New Mexico Community College, Western New Mexico University, and Eastern New Mexico University in dual credit and internship programs, utilizing post-secondary institutions around the state as our program grows and enrollment increases.

Through our founding board members, we have already developed relationships with businesses, business leaders, and educational institutions throughout the state who will participate in our outreach program, internships, and certificate programs. The Unser Discovery Campus is proposed to serve as the administrative offices and primary learning center for many of the Career Pathway and CTE activities serving the greater Albuquerque and surrounding areas. NMGA intends to work with business, industry, community colleges, and other community entities throughout the state to make Career Pathway exploration activities, workshops, and instruction readily available to students across the state.

1.2 Process

1.2.1 Describe process for data gathering and analysis

The NMGA founders were actively involved in the establishment of the proposed facility and location having had experience in establishing facilities for prior charter schools. The Unser Discovery Campus has been an educational facility for many years – housing Cottonwood Classical Preparatory School and the New Mexico International School. Our intent is to utilize the Unser Discovery Campus as our

[3]

flagship location. This will be a stand -alone campus. One of the initial responsibilities of the Governing Council will be to set up a Facilities and Capital Planning Committee in order to fulfill the expected need for expansion.

☐ **Identify individual representing the school authorized as contact on issues and questions related to this submission**

Janet Devesty
1776 Montano Rd. NW
Los Ranchos, NM 87107
Phone: 505-938-7725
Email: janet@unserracingmuseum.com

☐ **Identify process for capital planning and decision-making**

Our proposed facility is already zoned appropriately for an educational facility. Members of the NMGA applicant committee have prior experience in establishing facilities for charter schools. The Unser Discovery Campus is proposed to serve as the administrative office and primary learning center for many of the Career Pathway and CTE activities serving the greater Albuquerque and surrounding areas. The Unser Discovery Campus has been an educational facility for many years, housing Cottonwood Classical Preparatory School and the New Mexico International School.

NMGA intends to work with business, industry, community colleges, and other community entities throughout the state to make Career Pathway exploration activities, workshops, and instruction readily available to students across the state. Through our founding board members, we have already developed relationships with businesses, business leaders, and educational institutions statewide who will participate in our outreach program, internships, and certificate programs. As mentioned above, we will work closely with New Mexico State University, Clovis Community College, University of New Mexico, Highlands University, Central New Mexico Community College, Western New Mexico University, and Eastern New Mexico University in dual credit and internship programs, utilizing post-secondary institutions around the state as our program grows and population increases.

After charter approval, one of the initial responsibilities of the Governing Council will be to appoint a Facilities and Capital Planning Committee that will focus on capital planning and decision-making. Our proposed Albuquerque facility is already zoned appropriately for educational use. The Facilities and Capital Planning Committee will confirm that all facilities utilized by NMGA are also appropriately zoned.

☐ **Identify how community input is considered**

☐ **list members that attended planning meetings and their affiliation**

The community members who attended our planning meetings provided input and feedback regarding the use of the Unser Discovery Campus. Please see Attachment 1 for a list of these community members.

[4]

- ☐ **Describe the nature of Steering committee involvement**
 - o **identify members of the steering committee**

Members of the steering committee include the members who attended planning meetings. Please see Attachment 1.

2. PROJECTED CONDITIONS

2.1 Programs and Delivery Methods

2.1.1 Programs overview

- ☐ **Provide overview of proposed educational programs and facilities (include facilities if you have one or a potential facility)**

NMGA will feature five components that make the school unique and will improve student academic engagement:

1. Career Pathways Program – the Career Pathways Program will be designed to engage students in selecting coursework that piques their interest in a future career and makes coursework relevant. NMGA intends to develop partnerships with business and industry throughout the state to enhance curricular offerings and provide learning opportunities based on the national Career Cluster model designed by the National Association of State Directors of Career Technical Education Consortium that include workshops, internships and more.
 - a. 6-8 Middle School education with focus on identified pathway interest
 - b. 9-12 High School education with specific classes focused on post- secondary and career goals.
2. Individualized Learning – a key component of the NMGA education program will be the individualized learning plan (ILP). Upon enrollment, school staff, led by the school counselors, will develop a customized ILP for each student. The ILP will be based on a review of the student’s past academic records, input from the student and parent, and standardized test results. The ILP will address each student’s unique strengths, weaknesses, learning styles and aptitudes. The ILP will also serve as a starting point for the Career Pathways Program by introducing the options and allowing students to identify and select a career pathway.
3. Comprehensive Support Programs – NMGA will not just offer online courses. The school will offer comprehensive services and programs that will include federal title programs (i.e. special education, ESL/ELL), student field trips, counseling services, social support services through community

[5]

partnerships for students/families in need, onboarding services to orient students to online education and insure a quality start for students in the program.

4. Rigorous and Flexible Curriculum Options – the nature of online education allows for flexible instruction that addresses each student’s specific learning style. Through the ILPs referenced above, NMGA will insure that each student is working in ways that enhance their learning experience.
5. Parental Involvement – NMGA understands that online learning is not the best educational setting for every child. The enrollment process will be designed to ensure that families understand the demands of online learning. Students in elementary and middle school will require considerable levels of parental engagement. In high school, the NMGA staff will continue to work with parents as the students work towards the goal of becoming independent learners. NMGA teachers, staff, and administration will communicate regularly with parents through email, phone, web-conferencing, face to face events, and mail. All NMGA staff will be available to meet with parents to address any concerns related to the school or the student.

In addition, NMGA will include an assessment and accountability program as an integral part of the academic program. This will include benchmark assessments at the beginning of the year; individual learning plans for each student; regular diagnostic performance assessments throughout the school year to measure growth; ongoing lesson, unit, and semester assessments to demonstrate mastery of the learning objectives in the curriculum; and New Mexico Statewide Assessment Program (NMSAP) tests to demonstrate that Academy students are meeting and exceeding the state learning standards.

The Albuquerque facility will house NMGA administrative offices, computer labs, and a common area for guest speakers, community workshops, and training.

☐ **Identify and describe any potential shared/joint use facilities with public or private entities**

The Albuquerque campus will be a stand-alone campus, but we will seek to use facilities throughout the state for various school activities. These facilities will not be a school campus, but locations secured for specific events. NMGA will hold school activities outside the Albuquerque area at universities, community colleges, and community centers.

☐ **Describe the school’s proposed instructional program**

NMGA’s instructional model will provide an individualized virtual education appropriate for students from kindergarten through grade 12. By enrolling students beginning in the elementary grades (K-5), NMGA is recognizing that data shows the clear benefit of persistence in virtual schools starting in the elementary years. Longer continuous enrollment generally correlates to higher academic achievement on state tests in both reading and mathematics. Students who stay in virtual public schools longer achieve higher percentages at or above the proficiency cut scores, while, in general, students who stay the least amount of time show the least increase in percentage at or above proficiency.

A key component of the school will be the introduction to careers in the elementary grades, exploration of Career Pathways in the middle school grades, and Career and Technical Education focused on industry certifications in high school. Students will engage in an academic program that they find relevant to their future. This is especially critical for at-risk students who may have struggled with the learning process in the past. One of the most powerful means for achieving this objective of engagement is through career exploration and Career and Technical Education.

To further realize its vision/mission, NMGA will enhance its instructional model with additional support measures to provide a stable learning environment. A well-organized and systematic onboarding plan will ensure students are engaged in all course content and actively participating in orientation and classroom activities. Each student’s Individualized Learning Plan (ILP) will be based on a data-driven evaluation of where the student fits on a learning continuum between capable of achieving high school graduation and at risk of academic failure. School counselors will work closely with School staff to deliver a school wide Response to Intervention (RTI) program. Family Academic Support Team (FAST) members will provide ongoing communication with students and families, linking them to available resources such as community health care and social services as needed. Through this full-service school model, NMGA will provide the interventions and comprehensive support needed in both face- to-face and online learning experiences for students to graduate from high school and go on to reach their full potential in life.

☐ **Describe the general instructional organization (grade levels, groups, academies)**

K-5 Primary Program (including introduction to careers)

6-8 Middle School Program (including Career Pathways exploration)

9-12 High School Program (including Career Academy option as a “school within a school”)

☐ **Describe scheduling approach (periods, block schedule)**

The virtual curriculum can be presented in either a block or period schedule dependent upon the content area and pathway.

- ☐ **List anticipated special curricular and extracurricular activities to be accommodated in the facility, if any**

The school's administrative staff will oversee the education program from the NMGA learning center facility to be located on the Unser Discovery Campus in the city of Albuquerque, New Mexico. The learning center will also provide a community based center for staff development, parent and student classes and seminars, interdisciplinary and small group work, community and service projects, or for general gatherings.

2.2 Proposed Enrollment

2.2.2 Describe any plans for phased enrollment

- ☐ **Provide a graph of projected enrollment cap, if incremental**

Please see Attachment 2.

- ☐ **Identify by grade level, the five-year post occupancy projection of attendance to be accommodated by any proposed facility**

Please see Attachment 3.

2.2.3 Classroom loading policy

- ☐ **Identify anticipated class loading policy (student teacher ratio)**

Due to the nature of the virtual school, students receive 1:1 individualized instruction. The daily teaching load per teacher will be in compliance with the most current class load requirements in Section 22-10A-20 NMSA 1978 and Section 22-5-15 NMSA 1978.

2.2.4 Classroom needs

- ☐ **Identify anticipated classroom needs, including number of classrooms to accommodate the projected enrollment. Provide supporting analysis.**

The school's administrative staff will oversee the virtual education program from the NMGA facility to be located in the city of Albuquerque, New Mexico. The facility will also provide a community based center for staff development, student remediation, parent classes, interdisciplinary and small group work, community and service projects, and special events.

- ☐ **Itemize the quantity and sizes of other spaces required to accommodate the instructional program**

Please see Attachment 4.

2.3 Site and Facilities (if applicable)

2.3.1 Location/site

- ☐ **Include Map(s) which identify the location of any existing and proposed facilities**

Please see Attachment 5.

- ☐ **Provide a description of sites and facilities, existing or proposed**

The Unser Discovery Campus, located at 1776 Montano Rd. NW, Los Ranchos de Albuquerque, NM 87107 houses three buildings within the 5 acre, fenced and gated complex. Building 1 is the Unser Racing Museum which is a public, non-profit educational facility. Building 2 is the proposed campus for the New Mexico Gateway Academy. Building 3 is an office building that currently houses various tenants including the business management offices of Vigil and Associates.

2.3.4 Facility evaluation (If applicable)

- ☐ **Provide a summary of the facility condition evaluation (FAD Executive Summary Report)**
 - ☐ **Has PSFA evaluated the proposed facility for code and adequacy? If so, summarize PSFA/Code analysis of any existing facilities that are proposed for future use and include in this section.**

The proposed facility at 1776 Montano Rd., NW, Los Ranchos, NM 87107 has previously been occupied by charter schools and has been evaluated by PSFA and approved as an educational institution. Please see Attachment 6.

3. PROPOSED FACILITY REQUIREMENTS (Ed Spec)

3.1 Facility Goals and Concepts

3.1.1 What are the goals to be met by your school facility?

- ☐ **Outline plan for being in a public building by 2015 in compliance with HB-283 Exceptions?**

The lease between the NMGA and the Unser Discovery Campus will comply with NMSA 1978, 22-8B-4.2.

3.1.2 Concepts

- ☐ **Identify and describe major facility concepts including safety, security, sustainability, flexibility, community use, utilities, and any other issues or special considerations that impact space requirements and/or costs**

The New Mexico Public Schools Insurance Authority prepared a Safety Audit in March 2008 on the campus and buildings proposed for lease by NMGA. The findings were that the buildings met the ADA Accessibility Guidelines, the Uniform Traffic Control Devices, the International Fire Code, OSHA General Environmental Controls, and International Building Code.

The Los Ranchos Fire Department performs an annual inspection on the buildings and property and has approved the sprinkler systems and all portable fire extinguishers. The 5 acre property is totally fenced with a 6 foot chain link fence, cinder block wall and security gate. Of the total 50,000 square feet, the Unser Racing Museum occupies 23,000 square feet, and 6 tenants (including an accounting firm, 2 web design firms, a community theater and individual businessmen) occupy 5,500 square feet. 8,000 square feet is unoccupied and 10,000 square feet is common area. Traffic routes are well marked and there are designated parking spaces for 115 cars.

4. CAPITAL PLAN (if applicable - a short range plan which identifies capital projects or equipment purchases and includes financing options)

Not Applicable

5. MASTER PLAN SUPPORT MATERIAL

5.1 Sites and Facilities Data Table (if applicable)

- ☐ **Provide a table summarizing characteristics of site and facilities**
 - **Name of facility**
 - **State identification number**
 - **Physical address**
 - **Date of opening**
 - **Dates of major additions and renovations**
 - **Facility Condition Index (FCI) and N.M. Facility Condition Index (NMCI), if available**
 - **Site owned or leased**
 - **Total building area gross sq. ft.**
 - **Site acreage**
 - **Total number of permanent general classrooms**

- **Total number of permanent specialty classrooms**
- **Total number of portable classrooms**
- **Total number of classrooms**
- **Percentage of portable classrooms compared to total number of permanent classrooms**
- **Total enrollment current year (40th day count), if available (may not be available for a newly chartered school)**
- **Number of gross sq. ft. per student per school facility**

Please see Attachment 7 for the above information.

5.2 Site Plan (if applicable)

- ☐ **Scaled school site plan**

Please see Attachment 5.

5.3 Floor Plan (if applicable)

- ☐ **Scaled school floor plan(s) with rooms numbers to match inventory**
- ☐ **FAD forms updated**

Please see Attachment 5.

5.8 Detailed Space and Room Requirements (Ed Spec) if applicable

5.8.1 Technology and communications criteria

- Facility is equipped with 2 T1 lines.
- Fiber Cable
- Wireless Routers are located in every room.
- Main server room (locked, fireproof) that will house the school server
- Dedicated line for fire alarm
- Exit signs
- Security and alarm system which includes an electronic fob system for student and staff security

5.8.2 Power criteria

- The facility is equipped with all required power configurations.

5.8.3 Lighting and day lighting criteria

- Fluorescent lighting throughout the building
- Every room has natural lighting through windows and sky lights.

5.8.5 Classroom acoustics criteria

- Multi -purpose room has an acoustical ceiling for presentations

5.8.6 Furnishing and equipment criteria

- Receptionists have built in furniture
- Student areas will be equipped with student desks/chairs and computers
- The multi -purpose room will require stadium seating.

5.8.9 Criteria sheets

- Facility is equipped with fire sprinklersystem.

5.9 Submission

5.9.1 Final hardcopy placed in a three-ring binder

5.9.2 Final electronic copy

Attachment 1

Community Members

Kathy Kegal

- **Business Professionals of America Board Member/District Co-coordinator for K-3 NM Reads to Lead and K-12 SAT/RTI/504 Coordinator**

Kimberly Key

- **Rowell Middle School Instructor**

Chris Lyons

- **Border Industrial Association Board Member-Major Land Owner and Developer Santa Teresa, NM Facilitated Union Pacific investing 400 million in the Intermodal on the NM Border and building over 5 million square feet of industrial space**

Roanne Sexson

- **Former Flight RN, Lovelace Sr. VP of Clinical Operations, Owner of Albuquerque Senior Residential Facility**

Jim Suer

- **Magdalena Middle School Science Instructor and facilitator in the Journey to Mars competition**

Nick Maniatis

- **Director NM Film Commission. NM Film industry works closely with CNM for skilled labor**

Dr. John Russell

- **Professor Engineering UNM Formula SAE Project Director**

Ronda Cole

- **Director La Luz Academy. Air Force Research Lab Enrollment 850 students with emphasis on STEM.** La Luz Academy is a STEM education outreach program at KAFB, in partnership with AFRL and New Mexico Tech. We bring technologies developed by the RD and RV directorates into the classroom, motivating students from fifth through twelfth grade to study STEM in a hands-on way, while promoting and teaching Air Force Core Values.

Steven Lockyer

- **Senior in the mechanical engineering dept. for my bachelor's degree. Prior to college I was in the Navy for 5 years working on radar, communication, and navigation systems. I now work as an associate engineer for the Air Force**

Research Labs (AFRL) and I am the Deputy Program Manager of the UNM Formula Society of Automotive Engineers (SAE) team.

Lance Spencer

- Senior in the mechanical engineering dept. at UNM. I am the project manager for the 2015 formula SAE team at UNM. I currently work at the Air Force Research Lab performing composite material testing and analysis. I am a prior degree student, with a bachelor's degree from UNM in history, and I hope to work in the automotive/motorcycle racing industry.

Kelsey Johnson

- University of New Mexico obtaining my Bachelors of Science in Mechanical Engineering. I am the Marketing Manager and a Power-train Engineer for the 2015 Formula SAE team. I've been an intern at Sandia National Labs for 4 years and currently work in the Finite Element Analysis group, with past experiences in Electrochemistry, scenario simulation, and Robotics.

Andrew Harvey

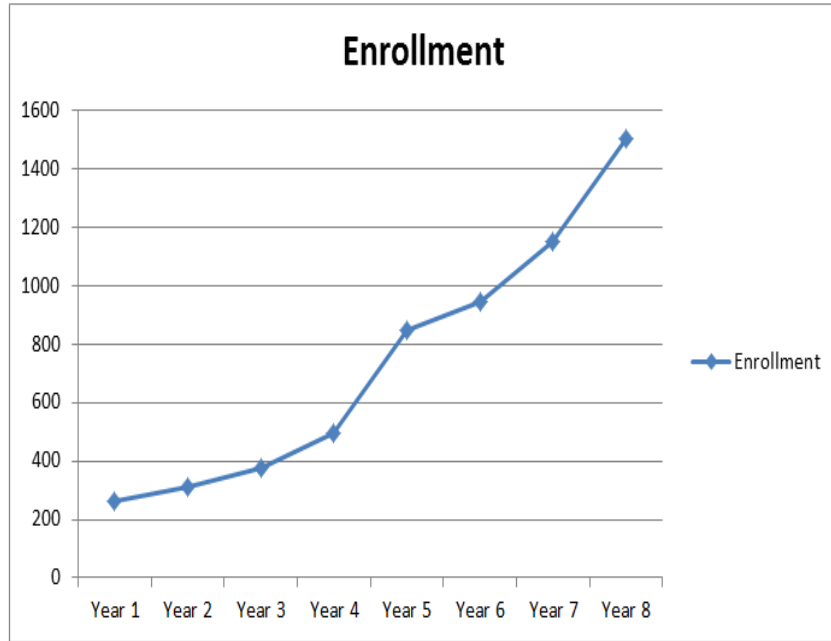
- Senior at UNM studying mechanical engineering. I am the Lead Systems Engineer for the schools Formula SAE Collegiate Design Team. I am also an intern at the Air Force Research Labs working with space structures.

Jacob Lowe

- Mechanical engineering student at UNM and 2015 FSAE Systems Engineer specializing in suspension and steering. I worked as a STEM UP Student Education Leader at UNM during the fall 2014 semester.

Attachment 2

New Mexico Gateway Academy Projected Enrollment Cap

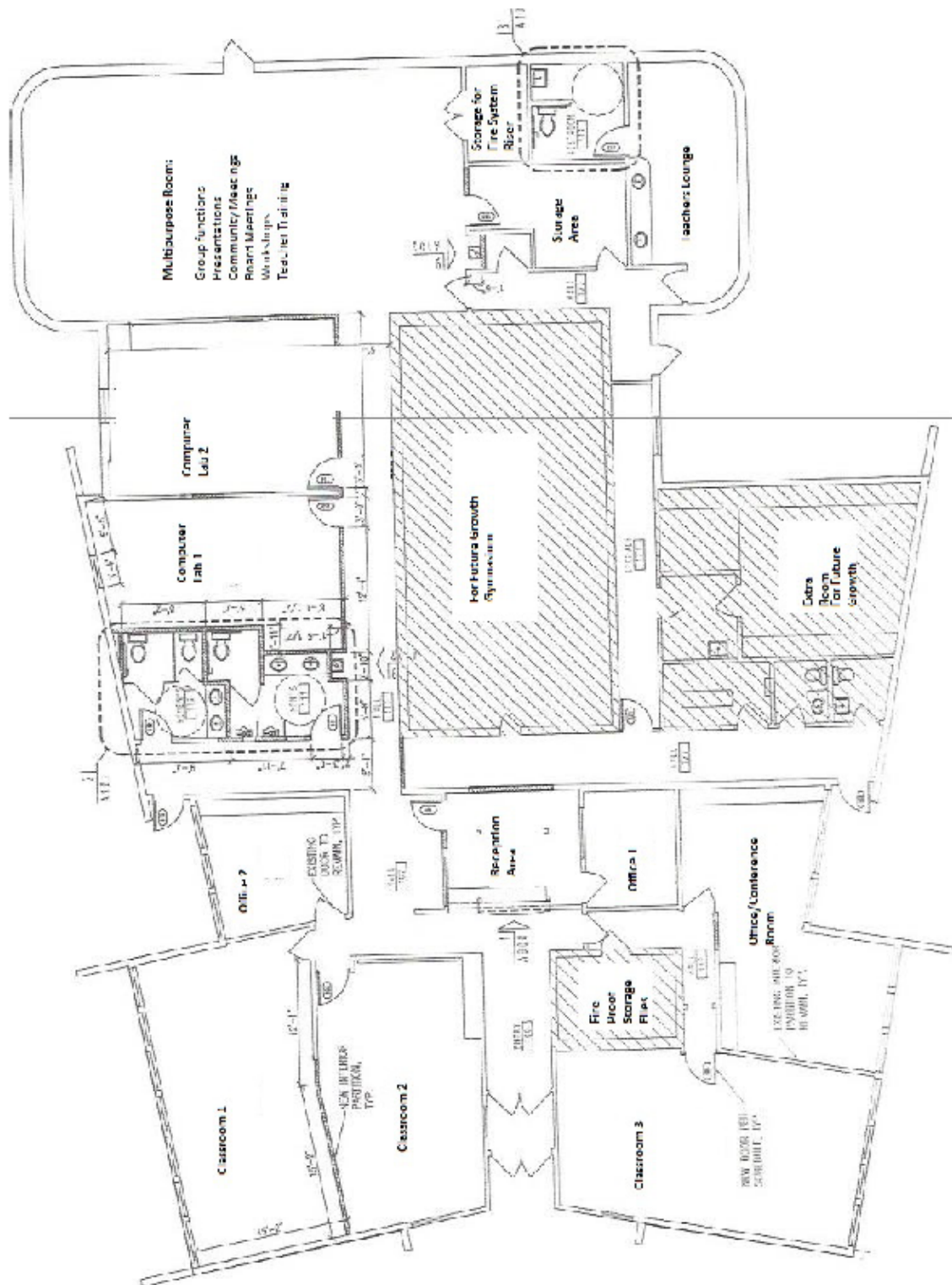


Attachment 3**New Mexico Gateway Academy projected enrollments by year**

Year	1 (2016-2017)	2 (2017-2018)	3 (2018-2019)	4 (2019-2020)	5 (2020-2021)
Grade	# of students	# of students	# of students	# of students	# of students
12	0	0	20	30	30
11	0	20	30	30	50
10	20	30	30	50	75
9	30	30	30	75	125
8	30	30	30	50	65
7	30	30	50	65	75
6	30	50	65	75	125
5	20	20	20	20	50
4	20	20	20	20	50
3	20	20	20	20	50
2	20	20	20	20	50
1	20	20	20	20	50
K	20	20	20	20	50
TOTAL	260	310	375	495	845

Attachment 4			
Included in Building:			
Sprinkler System; Fire Suppression System; Dedicated Phone Line for Emergency System			
Security System with FOB: Serviced by Armed Response Team			
White Boards in all Rooms			
Built-in closets and cabinets in all rooms			
Additions needed:			
Shortel hardware for phone system to include one phone per room/office			
Laptop/printer for each staff member/student			
Room	Total		Furniture/Equipment
Classroom 1 (Instruction/Remediation)	517		12 Tables/Chairs; Instructor desk/chair
Classroom 2 (Instruction/Remediation)	208		desk/chair
Office 1	163		Desk/Chair/Computer/Printer/fax/scanner/File Cabinet
Classroom 3 (General Instruction-drop in)	498		10-12 tables/chairs; instructor desk/chair
Office/Conference Room	380		Desk/Chair/Computer/Printer/Fax/scanner/Conference Table/6 Chairs/File Cabinets
Fire proof file room (storage for all files)	94		File Cabinets
Reception	197		Computer/PA System/Phones /Chair; Heavy Duty Copier (desk, cabinets, bookshelves built in)
Office 2	91		Desk/Chair/Computer/Printer/Fax/Scanner/File Cabinet
Computer Lab 1	186		Stations/Table/Chair/Computerr/Printer/Teacher Lectern/Projection Equipment
Computer Lab 2	308		Stations/Table/Chair/Computer/Printer/Teacher Lectern/Projection Equipment
MultiPurpose Room (Group functions/Community Meetings, Board Meetins, Workshops, Teacher Training and Presentations	1036		Conference Table, 50 Chairs; Smart Board; Projection Equipment
Teachers Lounge	247		Refrigerator
Restrooms (3)	340		
Storage	98		Multipurpose Storage Area
Gymnasium			Available for future growth
Extra Room			Available for future growth
	4363		

Attachment 5



<h1>Certificate of Occupancy</h1>		
		
<h2>County of Bernalillo</h2>		
<h3>Zoning, Building and Planning Department</h3>		
<p>This Certificate is issued in accordance with the requirements of the Bernalillo County Code and certifies that at the time of issuance this structure was in compliance with County ordinances regulating building construction or use.</p>		
Owner of Building: VILLAGE OF LOS RANCHOS DE ALBU	Building Permit No: EBCBP 80060	
Occupancy Group: E/03	Type of Construction: V B/03	Land Use Zone: A-1
Use of Building: NEW COMMERCIAL BUILDING/COTTONWOOD CHARTER SCHOOL Building Address: 1776 MONTANO RD NW ALBUQUERQUE, NM		
Legal Description: TR 8-A-1-A-1-A MECCD MAP #31 LOS POBLANOS RANCH CONT 4.97 AC M/L		
Approved By: <u>Walt Senohi</u>		
Authorized Building Official	Date: <u>August 21, 2008</u>	

Attachment 7

NMGA Sites and Facilities Data Table

Name of Facility	Unser Discovery Campus
State ID	#2489193
Physical Address	1776 Montano Rd NW, Los Ranchos de Albuquerque, NM 87107
Date of opening	2008
Date of major additions/renovations	2008
Facility Index (FCI) and N.M. Facility Condition Index (NMCI)	Not Applicable
Site owned or leased	Owned by Montano Land, LLC
Total building area gross sq.ft.	8000
Site acreage	5
Total number of permanent general classrooms	9
Total number of permanent specialty classrooms	2
Total number of portable classrooms	0
Total number of classrooms	11
Percentage of portable classrooms compared to total number of permanent classrooms	0%
Total enrollment current year (40 th day count)	Not applicable
Number of gross square feet per student per school facility	K-5 th grade – 100 sq.ft. 6 th -8 th grade – 120 sq. ft. 9 th – 12 th grade – 150 sq.ft.

From: [Janet DeVesty](#)
To: ["Adkins, Mari"](#)
Subject: FW:
Date: Tuesday, June 09, 2015 9:43:48 AM

Janet DeVesty

Unser Racing Museum

1776 Montano Rd., NW

Los Ranchos de Albuquerque, New Mexico 87107

janet@unserracingmuseum.com | 505.938.7725 office | 505.459.3349 cell

Unser Racing Museum is a non-profit 501 (c) (3) organization

CONFIDENTIALITY NOTICE - This e-mail transmission, and any documents, files or previous e-mail messages attached to it may contain information that is confidential or legally privileged. If you are not the intended recipient, or a person responsible for delivering it to the intended recipient, you are hereby notified that you must not read this transmission and that any disclosure, copying, printing, distribution, or use of any of the information contained in or attached to this transmission is STRICTLY PROHIBITED. If you have received this transmission in error, please immediately notify the sender by telephone or return e-mail and delete the original transmission and its attachments without reading or saving in any manner. Thank you.

From: Janet DeVesty
Sent: Monday, May 11, 2015 1:45 PM
To: 'superintendent@aps.edu'
Cc: 'tolley_m@aps.edu'
Subject:

Dear Mr. Winter,

On January 12, 2015, we sent you a copy of our Notice of Intent to Submit Charter Intent to Submit Charter application for the New Mexico Gateway Academy.

We will be submitting this as a State Charter, but as required by the Public School Facilities Authority checklist, we are inquiring if there are any existing facilities in the Albuquerque Public School district that we could review as a location for our Charter School.

If you have any questions or facilities available, please feel free to call or e-mail me, as I am the point of contact for this application process.

My name is Janet DeVesty and I can be reached at 505-938-7725 and my e-mail is

janet@unserracingmuseum.com.

Thank you,
Janet DeVesty

Janet DeVesty

Unser Racing Museum

1776 Montano Rd., NW

Los Ranchos de Albuquerque, New Mexico 87107

janet@unserracingmuseum.com | 505.938.7725 office | 505.459.3349 cell

Unser Racing Museum is a non-profit 501 (c) (3) organization

CONFIDENTIALITY NOTICE - This e-mail transmission, and any documents, files or previous e-mail messages attached to it may contain information that is confidential or legally privileged. If you are not the intended recipient, or a person responsible for delivering it to the intended recipient, you are hereby notified that you must not read this transmission and that any disclosure, copying, printing, distribution, or use of any of the information contained in or attached to this transmission is STRICTLY PROHIBITED. If you have received this transmission in error, please immediately notify the sender by telephone or return e-mail and delete the original transmission and its attachments without reading or saving in any manner. Thank you.