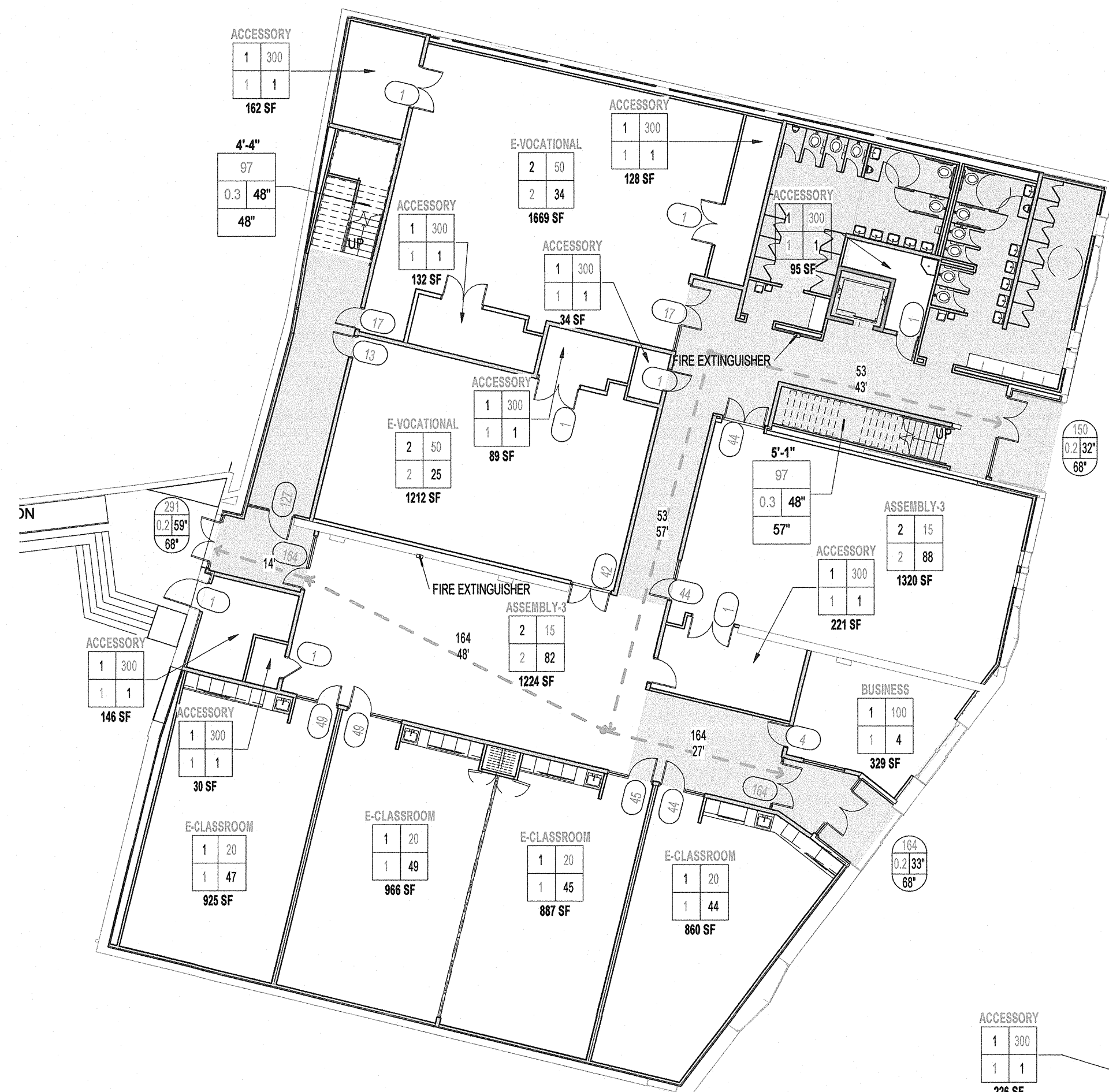


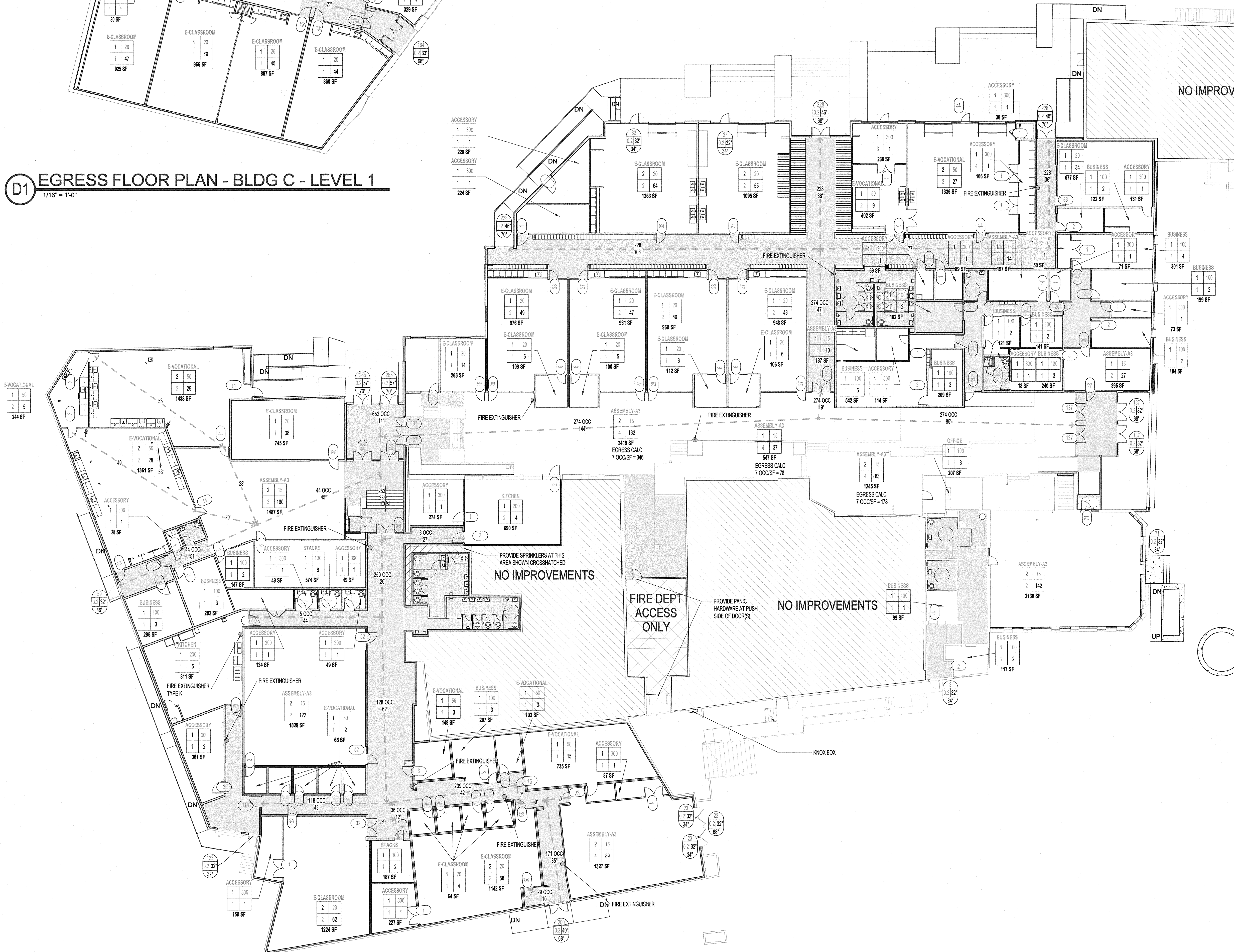
4/12/2017 2:36:26 PM

C:\Users\smh\Documents\1605 NMSA\_Central\_Seminar\65859.rvt



**E3** EGRESS FLOOR PLAN - BLDG C - LEVEL 2  
1/16" = 1'-0"

**D1** EGRESS FLOOR PLAN - BLDG C - LEVEL 1  
1/16" = 1'-0"



**A1** EGRESS FLOOR PLAN - BLDG A & B  
1/16" = 1'-0"

**GENERAL NOTES**

- A) COORDINATE WITH MECHANICAL, ELECTRICAL & PLUMBING
- B) ALL INTERIOR DIMENSIONS ARE TO FACE OF STUD, UNLESS NOTED OTHERWISE
- C) ALL EXTERIOR DIMENSIONS ARE TO FACE OF STUD, UNLESS NOTED OTHERWISE
- D) REFER TO ENLARGED PLANS FOR WALL TYPES AND DIMENSIONS WITHIN DETAILED AREAS
- E) COORDINATE FINAL LOCATION OF FIRE EXTINGUISHERS WITH FIRE MARSHAL
- F) REFER TO A-801 FOR DOOR AND FRAME TYPES

**CODE ANALYSIS**

REFER TO G-102 FOR CODE ANALYSIS/DESIGN DATA.

**KEYED NOTES**

**LEGEND**

- NON-CONTRIBUTING SPACES AND ROOMS
- NO IMPROVEMENTS

**OCCUPANCY TABLES**

**BLDG A OCCUPANCY TABLE**

OCCUPANCY USE	OCCUPANCY FACTOR	AREA	OCCUPANTS
ASSEMBLY-A3	15	7071 SF	471.40
E-CLASSROOM	20	7548 SF	377.42
E-VOCATIONAL	50	1737 SF	34.75
BUSINESS	100	2436 SF	24.36
OFFICE	100	207 SF	2.07
KITCHEN	200	690 SF	3.45
ACCESSORY	300	1763 SF	5.88
<b>AREA AND OCCUPANT TOTALS</b>		<b>22335 SF</b>	<b>519.32</b>

**BLDG B OCCUPANCY TABLE**

OCCUPANCY USE	OCCUPANCY FACTOR	Area	OCCUPANTS
ASSEMBLY-A3	15	4643 SF	309.56
E-CLASSROOM	20	3628 SF	181.30
E-VOCATIONAL	50	4094 SF	81.88
BUSINESS	100	932 SF	9.32
STACKS	100	761 SF	7.61
KITCHEN	200	811 SF	4.06
ACCESSORY	300	1195 SF	3.98
<b>AREA AND OCCUPANT TOTALS</b>		<b>16062 SF</b>	<b>597.71</b>

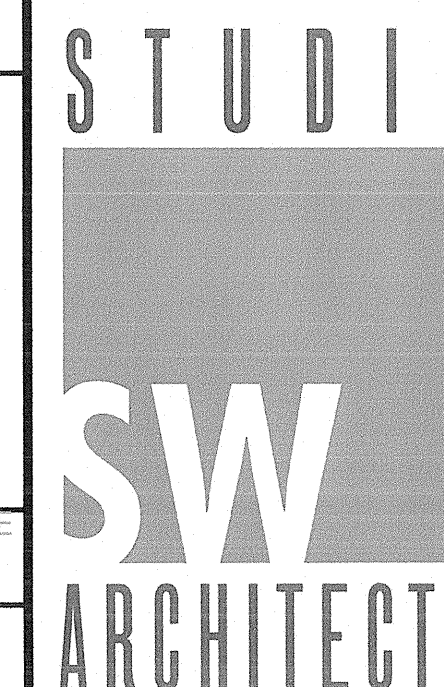
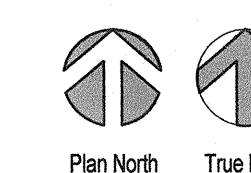
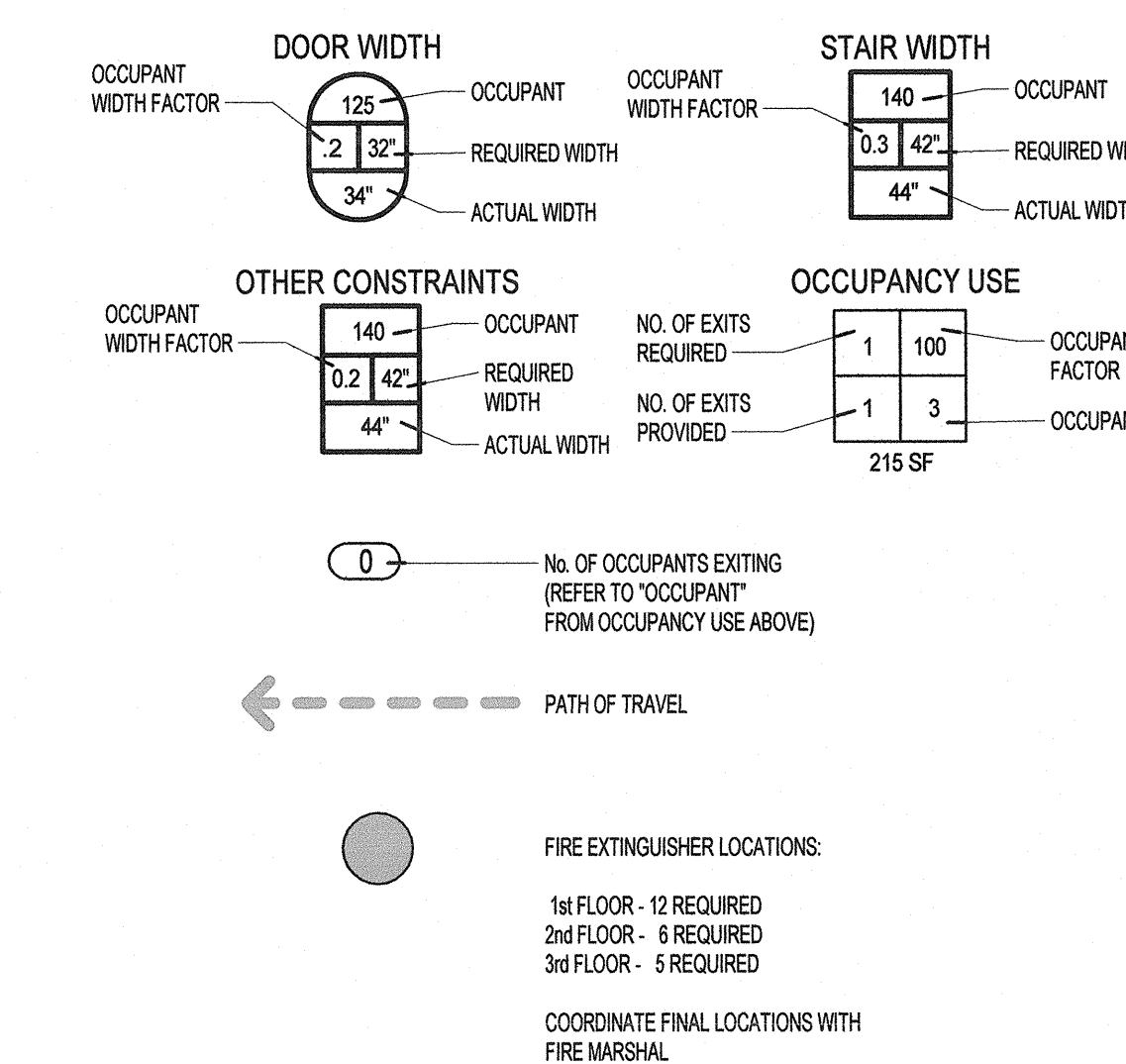
**BLDG C OCCUPANCY TABLE**

OCCUPANCY USE	OCCUPANCY FACTOR	Area	OCCUPANTS
ASSEMBLY-3	15	1558 SF	0.00
E-CLASSROOM	20	5287 SF	264.36
E-VOCATIONAL	50	3638 SF	181.90
BUSINESS	100	2882 SF	57.63
ACCESSORY	300	1188 SF	3.96
<b>AREA AND OCCUPANT TOTALS</b>		<b>13711 SF</b>	<b>601.48</b>

**GROSS SQUARE FEET**

BUILDING	GSF	PERIMETER
BUILDING A	30,145 SF	944'-7"
BUILDING B	22,705 SF	837'-8"
BUILDING C	15,185 SF	499'-10"
<b>BUILDING C 2ND FLOOR</b>	<b>4,833 SF</b>	<b>311'-6"</b>
<b>TOTAL</b>	<b>72,668 SF</b>	

**CODE SYMBOLS LEGEND**



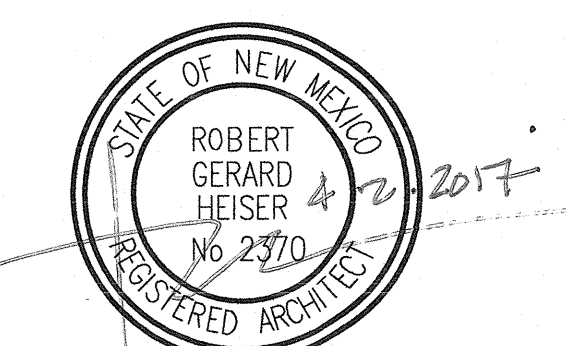
STUDIO SOUTHWEST ARCHITECTS, INC.  
2101 Mountain Rd. NW, Albuquerque, NM 87104  
505.843.9639 Fax 505.843.9683  
Web Site: www.studioswarch.com  
Email: mail@studioswarch.com

© 2014 Studio Southwest Architects, Inc. Duplication or reproduction by any means without the express written consent of Studio Southwest Architects, Inc. is a violation of federal and international law. The information contained in this document is the intellectual property of Studio Southwest, Inc. and all rights therein are reserved. For exceptions refer to the Owner-Architect Agreement.

**CONSULTANTS**

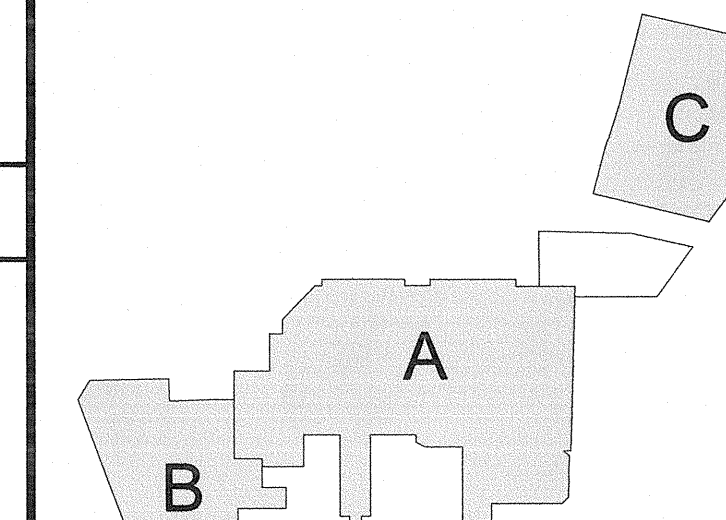
ARCHITECTS INC.  
**LAKE FLATO**  
311 THIRD STREET  
SAN ANTONIO, TEXAS 78205  
P. 210.227.3335 F. 210.224.9515  
www.lakeflato.com

Architect Engineer



**NEW MEXICO SCHOOL FOR THE ARTS - PHASE 1**

500 - 550 Montezuma Ave  
Santa Fe, NM 87501



**Key Plan**

NTS

No	Date	Description
<b>Revision Schedule</b>		
ISSUE:	PERMIT	
PROJECT NUMBER:	1605	
FILE:	1605G-101.RVT	
DRAWN BY:	STAFF	
CHECKED BY:	RGH	
DATE:	MARCH 13, 2017	

**SHEET TITLE**  
**EGRESS PLANS**

**G-101**

SHEET NUMBER 2 OF 196