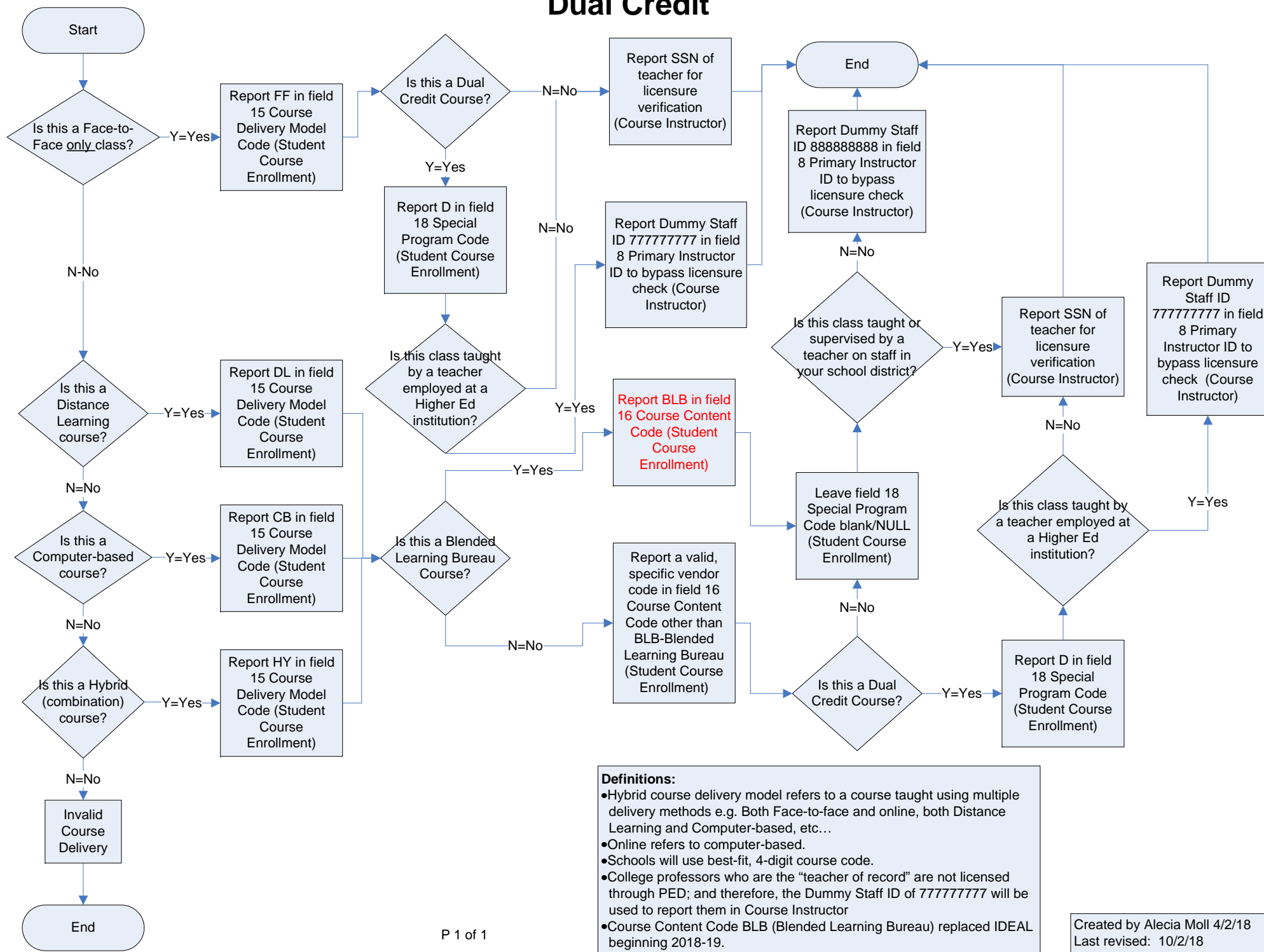


Blended Learning STARS Course Logic – for Course Delivery Model, Course Content & Dual Credit



Definitions:

- Hybrid course delivery model refers to a course taught using multiple delivery methods e.g. Both Face-to-face and online, both Distance Learning and Computer-based, etc...
- Online refers to computer-based.
- Schools will use best-fit, 4-digit course code.
- College professors who are the "teacher of record" are not licensed through PED; and therefore, the Dummy Staff ID of 777777777 will be used to report them in Course Instructor
- Course Content Code BLB (Blended Learning Bureau) replaced IDEAL beginning 2018-19.

Created by Alecia Moll 4/2/18
Last revised: 10/2/18