



What priority, program or initiative do you think the school/community/tribe should provide for Native youth to thrive?



***Parent and Family
Engagement/Introduction
to Community Asset
Mapping***

Diana Cournoyer, Oglala Sioux and Muscogee Creek
NIEA Executive Director

Agenda



Opening Question

Introductions

Learning Outcomes

Parent and Family Engagement

Community Asset Mapping

Community Asset Activities

Defining Assets

Learning Outcomes



Participants will:

1. Learn strategies on how your community/school can gather information through community mapping.
2. Identify assets within your community.
3. Learn how community assets can support policy initiatives.



What is an asset that you provide to youth in your community?

Why Community Asset Mapping?



- Build on and expand existing community strengths
- Facilitate community involvement in change
- Generate a shared awareness and understanding of community assets
- Communicate knowledge to external agencies
- Manage resources, community development, and planning
- Identify and potentially increase capacity within communities

Community Asset Theory of Change



- Native Youth well-being is shaped by a variety of factors in the community.
- To make long-lasting and sustainable changes the community and key stakeholders must be involved in the process of change.
- Youth must be effectively engaged in the community asset mapping process as key informants, decision makers, leaders, and implementers of activities to collect data, analyze and interpret data, develop recommendations, and carry out action planning.
- Others in the community have important roles too (tribal leaders, program providers, elders, advocates, etc.). Understanding each person or organization's role and how to effectively utilize their resources and strengths is critical to ensuring the community is invested and the results lead to the desired change.

Community Asset Mapping Planning Process



- Identify and involve partners
- Define community boundaries
- Define a community asset and determine what types of community assets to include
- Determine the collection methods and tools
- Organize the assets on a map

Identifying Partners Activity



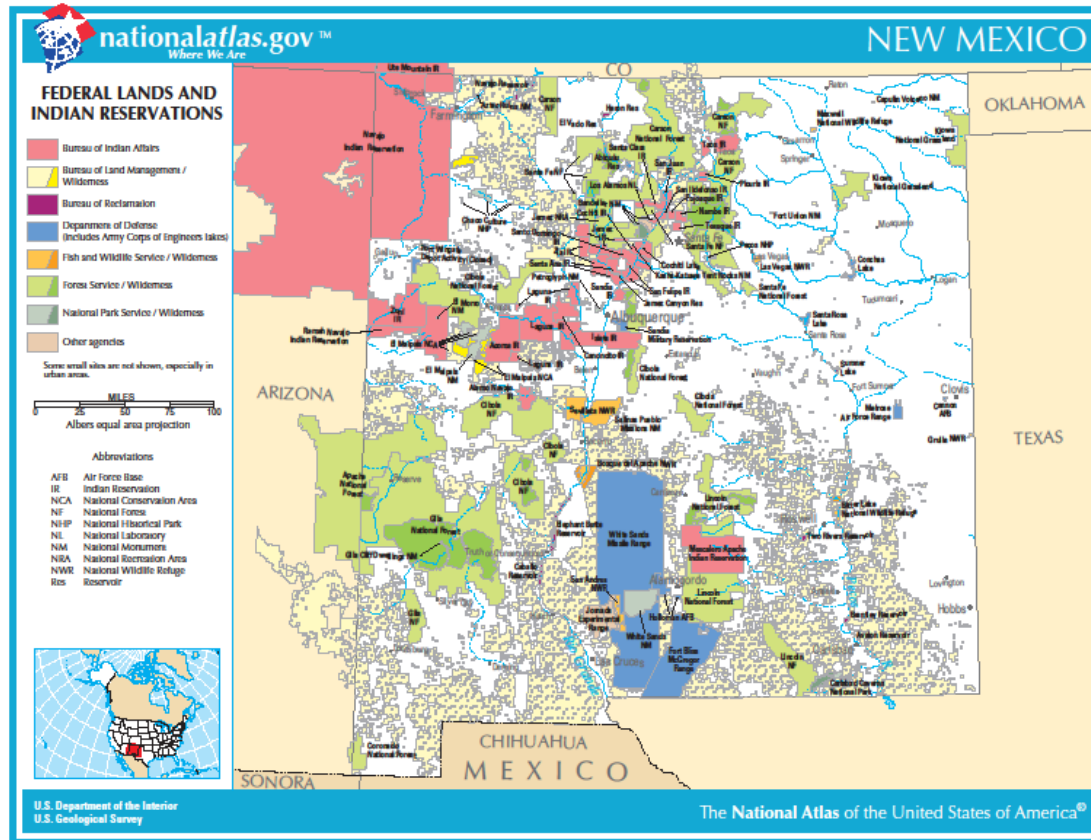
- Community Members, youth, organizations, leaders: (examples)
 - Tribal Council Members
 - Teachers
 - Elders
 - Social service and healthcare providers

**Diverse community and cultural knowledge*

Defining Community Boundaries Activity



- Geographic markers: tribal land, town, or city
- Consider: landmarks, streets, rivers, mountains



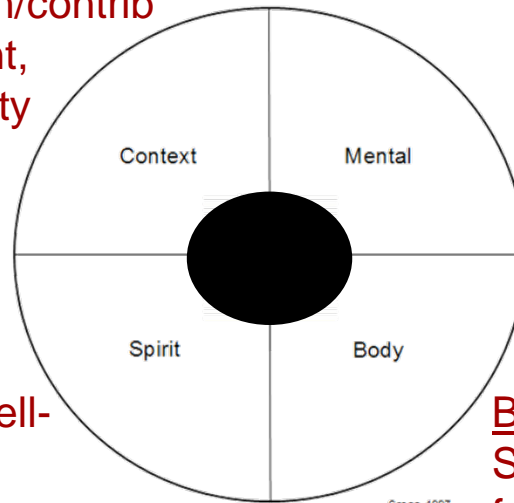
Defining a Community Asset



Individual and Family Assets

Context: support (family, friends, community)/interdependence, connection to land, community involvement/participation/contribution, family commitment, Kinship/elders/community connection/ties

Mind: Cultural identity/sense of belonging to cultural group, Ethnic Pride, Self-esteem, Happiness, Focus/determination, hope/looking forward/optimism, Educational enrollment/Achievement



Spirit: Spiritual value/well-being, Spiritual practice/knowledge/ceremony, Expressing Native identity, Balance, Ancestry/family genealogy

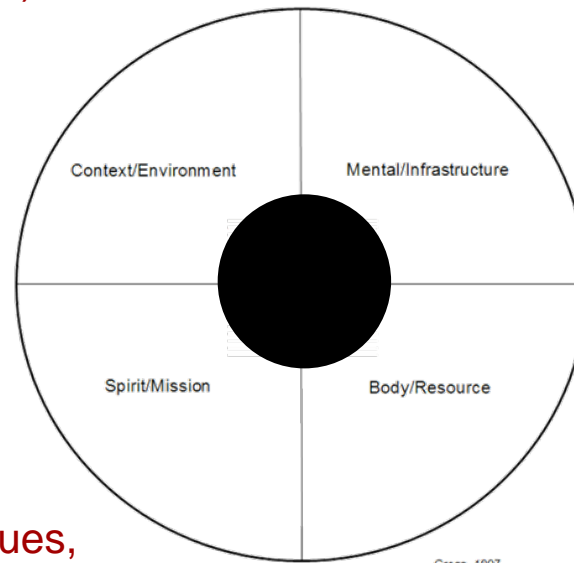
Body: Financial Security/Stability/income, Adequate food/good nutrition, traditional foods, housing/home ownership, access to healthcare, access to services, healthy lifestyles/activities, physical health/fitness, traditional healing practices

Defining a Community Asset



Environment: Physical (parks/monuments/tribal lands), Economic (banks/financial institutions), Political (power relationships, influence, partnerships), Social (strength, attitudes, beliefs), Culture

Mission: Mandates, Organizational Spirit, Values, Purpose, Vision, Mission, Spiritual Centers, Churches, Ethics, Philosophy



Infrastructure: Policies/Procedures, Management Structures (personnel management, fiscal management), Service Design, Strategic Plans, Tribal Code, Government-to-government agreements

Resources: Human Beings (Staff/Board members), Artists, Musicians, Athletes, Activists, Leadership (Tribal Council/ Youth Council), “Champions” (leaders of a cause), Information, Funding, Coalitions, Advocacy Groups, Tribal Media



Pilamaya ye

**Questions &
Comments**



Diana Cournoyer
Executive Director
dcournoyer@niea.org

Otto Hamilton
Field Operations Associate
ohamilton@niea.org

Jacob Tsotigh
Tribal Education Specialist
jtsotigh@niea.org