

TIS

**TAOS INTERNATIONAL CHARTER
SCHOOL**

Facilities Master Plan

SUBMITTED TO BILL SPRICK, PSFA

bsprick@nmpsfa.org

BY:

Nadine M. Vigil, Head Administrator/Director

118 Este Es Rd

Taos, NM 87571

CHARTER SCHOOL OVERVIEW

Taos International opened in 2014-2015 SY. It is located in Taos, NM, a rural area in Northern New Mexico (Taos County).

Year of application: July 2, 2012

As Head Administrator/Director of Taos International School, I reviewed and used the Adequacy Planning Guide and Charter-Alternative School Statewide Adequacy Standard Variance in assisting me to prepare the Facilities Master Plan designed to meet the schools' mission and vision which will lead to student achievement and success.

1.1 GOALS

Taos International School (TIS) will partner with parents and community and will provide K-8 students an opportunity to reach their maximum potential through a standard based, multicultural Dual Language and International Baccalaureate Program.

1.1.1 MISSION

Taos International School will provide K-8 students an educational program focused on inquiry-based teaching and learning, the acquisition of languages, and the development of social, emotional, and rigorous academic skills necessary to function in our local, national, and international community.

VISION

Students at Taos International School will learn respect for themselves, their community, and the larger diverse world in which they live while developing a moral consciousness that will help them build integrity into their lives.

1.1.2 EDUCATIONAL PHILOSOPHY

Taos International School's philosophy and instructional approach is research-based and incorporates best-practices in all aspects of instruction.

Taos International School's curriculum framework consists of three components that are aligned with the school's mission statement. The first component is the written curriculum. This component explains in great detail the school's instructional philosophy and approach. It addresses the question, "What will students learn?"

The second component of TIS' framework is the taught curriculum. In this section, the question, "How will students learn?" is addressed. The International Baccalaureate planning
Taos International School

documents provide some guidance in this area. However, the primary instructional strategies will derive from inquiry-based research and best practices. This component will also explain the one-way immersion approach to second and third language learning.

The third and final component of TIS' framework is the assessed curriculum. This component describes and explains all the formative and summative assessment that will be administered to monitor student progress and to generate quantitative and qualitative data to analyze. It will also provide important information on the alignment of the written, taught, and assessed curriculum. Most of the assessment information is provided in Section II J. (3) of this charter application.

The Written Curriculum: International Baccalaureate Primary Years Program (PYP)

New Mexico Common Core Standards and the International Baccalaureate Organization (IBO) curriculum documents provide the guidance in determining the written curriculum. NM Common Core Standards and IBO documents have been reviewed and topically aligned to ensure that the written curriculum is taught and assessed effectively.

TIS's curriculum materials and instructional strategies focus on carrying out educational goals identified in our mission and vision statement. TIS has applied and met all requirements to be designated as an IB Candidate school. TIS is currently applying for IB authorization to be designated as an International Baccalaureate (IB) world school. IB designation will allow TIS to offer the Primary and Middle Years Program (PYP, MYP) which has been proven to assist students in the acquisition of rigorous academic skills while embracing world cultures and languages.

The study of a second and third language is a required component of the TIS educational program. Students at TIS are expected to be proficient by the end of eighth grade in both English and Spanish and to begin studying a third language, Mandarin Chinese, at the beginning of fourth grade. Spanish proficiency is measured not only by the student's ability to speak the language, but also by the student's ability to engage with native-like fluency in writing and reading activities. TIS implements a one-way immersion approach to teach languages.

1.1.3 SERVING THE COMMUNITY

Taos International School serves students that come from many different backgrounds and that are at many different ability levels. Offering the programs that TIS offers assist in activating the learning process. Integrated instruction with Dual Language and International Baccalaureate Programs is an approach that addresses the common classroom problems of: lack of student interest and motivation, the diversity of student ability levels, students' multiple intelligences and learning styles, meaningful content, and student choice. An integrated curriculum provides a framework and methodology to address these problems, and accomplish classroom learning goals.

Taos International School

Taos County is a rural area and its schools demographic data currently consists of 78% Hispanic, 13.7% Caucasian, 6.6% Native Americans, 0.6% African American and 1.0% Asian. Taos has an English Language Learners (ELL) Population of 15.7% and 0.2% special education students. 100% of all these students is designated economically disadvantage. The target population of the school reflects the demographics of the community schools, none of which met AYP requirements. Out of the seven schools in the district, two are listed under schools in improvement, one under schools in corrective action, and four under schools in restructuring.

Currently, not all students requesting the dual language program that is offered in only one of the three public elementary schools have the opportunity to participate because of limited space. A continuation of this dual language program is no longer offered for sixth grade students at the middle school level resulting in limited choices to a mono-lingual, mono-cultural schooling system. Therefore, this substantiates the need to provide these essential educational services for students within the Taos community.

TIS provides a greater focus on a multilingual curriculum and addresses the international education and foreign language needs of New Mexico students by offering the International Baccalaureate's Primary Years Programme for students aged 3-12 which focuses on the development of the whole child as an inquirer, both in the classroom and in the world outside. Middle Years Programme for students aged 11-16 which provides a framework of academic challenge that encourages students to embrace and understand the connections between traditional subjects and the real world, and become critical and reflective thinkers will also be offered at TIS.

One of the Middle Years Programme areas of interaction is community service. Community and service starts in the classroom and extends beyond it, requiring students to take an active part in the communities in which they live. Giving importance to the sense of community throughout the programme encourages responsible citizenship as it seeks to deepen the adolescent's knowledge and understanding of the world around them. The emphasis is on developing community awareness and concern, and the skills needed to make an effective contribution to society.

Students are encouraged to make connections between their intellectual and social growth, thereby refining their affective, creative and ethical as well as cognitive development. This is achieved through a process of discovery of self and community, and reflections inside as well as outside the classroom.

International Baccalaureate programs are not offered within the Taos Municipal Schools. The study of foreign languages in a one-way language immersion educational environment enhancing student's long-term achievement and performance will also be offered at TIS.

Enhanced learning and best practice strategies are implemented to meet and exceed the state Common Core Standards. TIS also provides students with skills necessary to compete in the global economy and workforce by entering a K-8 educational program that is rigorous, standards-based, and focused on addressing the academic and linguistic needs of students. One of the schools required components is that students be proficient in two languages by the end of eighth grade. By the beginning of fourth grade students will begin studying a third language: Mandarin Chinese.

PROCESS

Process for Data Gathering and Analysis

The process for gathering data and analysis was conducted through a series of interviews involving the founders of Taos International School. Promising facilities and their owners were interviewed to acquire data and analysis.

1.2.2 AUTHORITY AND FACILITIES DECISION MAKING

Nadine M. Vigil, Head Administrator/Director was the individual representing the school authorized as contact on issues and questions related to the submission. The process for capital planning and decision making was with founders of Taos International School and Governing Council Members. Community input was also considered by holding public forums where the community was able to voice their opinions. Following is the list of Head Administrator/Director and Governing Council Members and their affiliation.

Nadine M. Vigil, MA, Head Administrator/Director/Founder of Taos International
Taos Municipal Schools Retired Principal (2010)

Adjunct Professor, University of New Mexico-Taos

Adjunct Professor, Northern New Mexico College-Taos

Ms. Vigil has served in various administrative and teaching roles for over forty years including Teacher Assistant, Teacher, Assistant Principal, Principal, Adjunct Professor and Head Administrator/Director. Ms. Vigil is Bilingual (English/Spanish) and holds a New Mexico Level III-A Instructional Leader K-8 Elementary License with Bilingual, TESOL and Modern and Classical Languages endorsements along with a Level III-B PreK-12 Administrative License.

2018-2019 Governing Council

Carla Romero, Governing Council President-Ms. Romero is a Title Examiner with New Mexico Title & Abstract Company, Inc. Her knowledge and expertise in this area helped TIS find the appropriate land/facility to accommodate the school's population.

Clifford Johnson, Governing Council Vice President-Mr. Johnson is a retired Lawyer. His expertise contributes extensive advice in following school law.

Anna Parraz-Romero, Governing Council Secretary- Ms. Romero is a retired educator. Her extensive knowledge of the educational profession allows for a wealth of professional advice. She is bilingual (English/Spanish) and holds a New Mexico Instructional Leader K-8 Elementary License.

Edna Peña- Governing Council Member-Ms. Peña is a retired educator. She holds a New Mexico Instructional Leader K-8 Elementary License and an Administrative License. She is bilingual (English/Spanish). Her extensive knowledge of the educational profession allows for a wealth of professional advice.

Amanda Arellano-Governing Council Member- Ms. Arellano works for Taos County in the Human Resources (HR) department. Her expertise and knowledge as an HR employee provides TIS with a wealth of professional advice.

Alice Garcia-Governing Council Member-Ms. Garcia works as an Office/Budget Manager for Hinds & Hinds Storage. Her experience assists TIS in the operation of the school.

2. PROJECTED CONDITIONS

2.1 PROGRAMS AND DELIVERY METHODS

Taos International School Curriculum has been selected/developed. The International Baccalaureate Primary Years Program (IB PYP) and Middle Years Program (MYP) curriculum documents and the New Mexico Common Core Standards and Anchor Standards are the foundation documents for the school. The IB PYP scope and sequence for all content areas and supporting documents are available in English and Spanish. Although not as extensive, documents are also available in Mandarin Chinese.

New Mexico Common Core Standards will be addressed by aligning the IB PYP and MYP documents with standards in all core content areas.

The IB PYP and IB MYP scope and sequence for all content areas and supporting documents are available in English and Spanish. Although not as extensive, documents are also available in Mandarin Chinese. New Mexico Common Core Standards will be addressed by aligning the IB PYP/ MYP and documents with standards in all core content areas.

The Written Curriculum: One-way Language Immersion (Spanish and Mandarin Chinese Instruction)

The second part of Taos International School's curriculum framework and written curriculum is the study of languages in a one-way immersion classroom environment. TIS will adopt and revise if necessary the Spanish language arts standards, "Estándares de Artes del Lenguaje en Español", available on the New Mexico Public Education Department Bilingual and Multicultural

Education web site. Exhibit 4.0 provides a first grade sample of this important curriculum document. The standards cover grades K-8.

Exhibit 4.0

Sample Spanish Language Arts Standards K-8 (Estándares de Artes del Lenguaje en Español)

First Grade

Primer Grado

Énfasis: La comprensión de la lectura y la comprensión auditiva

Estándar 1: Los estudiantes aplicarán las estrategias y destrezas para comprender información leída, oída y observada.

Cota A: Escuchar, leer, reaccionar y recontar información

Actividades

1. Escuchar y recontar cuentos cortos.
2. Reconocer la repetición y predecir expresiones repetidas.
3. Responder y elaborar a las preguntas (¿quién?, ¿qué?, ¿cuándo?, ¿dónde? y ¿cómo?).
4. Discutir y explicar las respuestas a preguntas relacionadas a textos narrativos y expositivos.
5. Hacerse preguntas, recontar y resumir para evaluar su propia comprensión.
6. Seguir instrucciones sencillas tanto escritas como orales.
7. Aumentar el vocabulario al leer y escuchar, y por medio de la interacción personal.

Cota B: Localizar y usar una variedad de recursos para adquirir información.

Actividades

1. Demostrar familiaridad con una variedad de recursos (p. ej., cuentos, poemas, periódicos, discos compactos, "software", guías telefónicas, piezas teatrales cortas).

Cota C: Demostrar destrezas analíticas para comprender la información oral, observada y escrita.

Actividades

1. Asociar palabras claves con conocimiento anterior y explorar el uso de vocabulario del autor.
2. Predecir y explicar lo que pasará próximamente en un cuento.
3. Demostrar familiaridad con una variedad de textos (p. ej., cuentos, poemas, periódicos, etc.).
4. Describir las diferencias y semejanzas entre cuentos distintos (p. ej., personajes, argumento, lugar).

Cota D: Adquirir destrezas de lectura y demostrar competencias en las destrezas y estrategias del proceso de la lectura.

Actividades

1. Desarrollar el conocimiento fonético.
2. Demostrar estrategias y destrezas para reconocer palabras.
3. Leer a voz alta con fluidez y comprensión textos del primer grado.
4. Utilizar el significado de las oraciones, el cuento mismo y la sintaxis para asegurar la comprensión.
5. Aumentar el vocabulario al leer y escuchar, y por medio de la interacción personal.

Énfasis: La expresión oral y escrita.

Estándar 2: Los estudiantes comunicarán efectivamente por medio del habla y la escritura.

Cota A: Demostrar competencia oral para comunicar información.

Actividades

1. Leer a voz alta con fluidez y comprensión textos del primer grado.
2. Participar en discusiones que resultan en algo escrito.
3. Escoger y usar vocabulario y estructuras lingüísticas nuevas (p. ej., recontar, usar exclamaciones para responder emotivamente a acontecimientos o ideas).

Cota B: Implementar convenciones gramaticales y lingüísticas para comunicar.

Actividades

1. Confirmar predicciones sobre lo que pasará en el texto al identificar vocabulario clave.
2. Usar el contexto para resolver dilemas.
3. Relacionar el conocimiento anterior a la información en el texto.
4. Practicar las letras mayúsculas y minúsculas para asegurar su formación
5. Usar oraciones completas para escribir un texto sencillo.

6. Usar las mayúsculas y la puntuación para
 - la primera palabra de una oración;
 - los nombres propios;
 - el uso del punto al final de oraciones declarativas;
 - el uso apropiado de los puntos de interrogación,
7. Evaluar su propia composición al leerla otra vez y/o consultar con los compañeros.

Cota C: Demostrar competencia en las destrezas y estrategias del proceso de la escritura.

Actividades

1. Escribir siguiendo el estilo de algún autor.
2. Crear una variedad de textos (p. ej., cuentitos, cartas, poemas sencillos, diarios, etc.).
3. Escribir descripciones de personas, lugares u objetos conocidos.
4. Escribir usando borradores para realizar un texto legible y lógico.
5. Empezar a usar ortografía precisa.

Énfasis: La literatura y los medios de comunicación

Estándar 3: Los estudiantes usarán la literatura y los medios de comunicación para desarrollar una mayor comprensión de la sociedad en general, de la comunidad y de sí mismos.

Cota A: Utilizar el idioma, la literatura y los medios de comunicación para llegar a un mayor aprecio de las diferentes culturas que le rodean.

Actividades

1. Aumentar el vocabulario y comprender las expresiones que se encuentran en obras literarias apropiadas.
2. Identificar las personas y los argumentos sencillos de mitos y cuentos de otras partes del mundo.
3. Describir acontecimientos relacionados a otras naciones y/o culturas (p. ej., drama, dibujos, construcciones, etc.).

Cota B: Identificar y utilizar los géneros literarios según su propósito.

Actividades

1. Identificar los elementos de argumento y lugar en un cuento.
2. Demostrar la comprensión de la secuencia y la caracterización en el cuento por medio de la actuación, el dibujo, la declamación y/o la redacción.

In addition to the Spanish Language Arts Standards recommended by the Bilingual and Multicultural Education Division, TIS has reviewed the Las Vegas City School's Spanish language arts curriculum document. This document is also available on the New Mexico Public Education Department web site.

Mandarin Chinese Language Curriculum

The written curriculum for classical Mandarin Chinese instruction will originate from a variety of sources. The International Baccalaureate Organization's Online Curriculum Center provides a variety of reference material for the study of the language.

Another important resource is the Center for Applied Linguistics. Their resource database produced hundreds of materials in Mandarin Chinese. The site listed dictionary, texts, literature books, readers or anthologies, references materials as well as general guidance on how to teach the language. The University of New Mexico's foreign languages division will also be source of information and possibly teachers to assist TIS in implementing a Mandarin Chinese language program for fourth through eighth grade students.

Mandarin Chinese Language Curriculum development will begin during the first year along with the development of "Program of Inquiry." Although students will not be enrolled in Mandarin Chinese classes until the 4th grade, Mandarin Chinese teachers will be hired on a very limited basis to develop the curriculum, secure instructional materials, and explain the Mandarin Chinese language program to staff members and families.

Textbooks and Other Instructional Materials

Taos International School has adopted the following state approved textbooks/resources to assist teachers in implementing the written curriculum in the four core content areas in either English and/or Spanish:

CONTENT	K	1ST	2ND	3RD	4TH	5TH	6TH	7TH	8TH
Language Arts: Houghton Mifflin (English and/or Spanish)	X	X	X	X	X	X	X	X	X
Mathematics: Everyday Math (English	X	X	X	X	X	X	X	X	X

and/or Spanish)									
Science: Center for Hands on Learning	X	X	X	X	X	X	X	X	X
Social Studies: Scott Foresman (Spanish)	X	X	X	X	X	X	X	X	X

Additional materials such as dictionaries, maps, readers, phonic (English and Spanish) programs, manipulative, visuals, and computers will be purchased to assist teaching staff in delivering the written curriculum.

The Taos International School Curriculum has been selected/developed. As described above, the International Baccalaureate Primary Years Program (IB PYP) and Middle Years Program (MYP) curriculum documents and the New Mexico Common Core Standards are the foundation documents for the school. The IB PYP scope and sequence for all content areas and supporting documents are available in English and Spanish. Although not as extensive, documents are also available in Mandarin Chinese.

New Mexico Common Core Standards will be addressed by aligning the IB PYP and MYP documents with standards in all core content areas.

According to second language research, the most effective approach to learning a language is through complete immersion. (Lambert and Tucker 1972; Swain 1982) Therefore, students Kindergarten through third grade at TIS will engage in the 50/50 Dual Language model. Classroom instruction is delivered 50 percent of the time in Spanish and 50 percent of the time in English. Fourth- Eighth grade will be implementing the "Heritage Model."

The formal study of the third language, Mandarin Chinese, begins in 4th grade. By this time, students will have reached sufficient command of English and Spanish skills to allow for the introduction of Mandarin Chinese. It is anticipated that no more than 5-10 percent of the regular school day will be allocated to the acquisition of Mandarin Chinese language skills. Student outcomes for Mandarin Chinese will be at the beginning to intermediate level. The goal is for conversational skills that emphasize pronunciation and vocabulary.

2.1.1 PROGRAMS OVERVIEW

Below is a proposed staff plan for TIS. The maximum number of students is 20 or a 20:1 ratio per class.

Year One: 2014-2015	Year Two: 2015-2016	Year Three: 2016-2017	Year Four: 2017-2018	Year Five: 2018-2019
6 Teacher FTEs (K, 1, 6)	10 Teacher FTE (K, 1,2, 6,7)	14 Teacher FTEs (K, 1,2,3,6,7,8)	16 Teacher FTEs (K,1,2,3,4, 6,7,8)	18 Teacher FTEs (K,1,2,3,4,5,6,7,8)
1 Special education FTE	1 Special education FTE	2 Special education FTE	2 Special education FTE	2 Special education FTE
.5 Art teacher FTE	.5 Art teacher FTE	.5 Art teacher FTE	.5 Art teacher FTE	.5 Art teacher FTE
.5 Music teacher FTE	.5 Music teacher FTE	.5 Music teacher FTE	.5 Music teacher FTE	.5 Music teacher FTE
			.5 Mandarin Chinese Teacher FTE	.5 Mandarin Chinese Teacher FTE
.25 Head Administrator	.25 Head Administrator	.25 Head Administrator	.25 Head Administrator	.25 Head Administrator
1 School Director	1 School Director	1 School Director	1 School Director	1 School Director
1 Bilingual Director	1 Bilingual Director	1 Bilingual Director	1 Bilingual Director	1 Bilingual Director
1 Business Manager	1 Business Manager	1 Business Manager	1 Business Manager	1 Business Manager

Year One: 2014-2015	Year Two: 2015-2016	Year Three: 2016-2017	Year Four: 2017-2018	Year Five: 2018-2019
1 Office Manager/Bookkeeper (clerical)	1 Office Manager (clerical)	1 Office Manager (clerical)	1 Office Manager (clerical)	1 Office Manager (clerical)
2 Educational Assistants	4 Educational Assistants	4 Educational Assistants	4 Educational Assistant	4 Educational Assistants

2.2 PROPOSED ENROLLMENT

Taos International School, was approved, and opened doors during the 2014-2015 school year. During the first year, 49 students were enrolled in K-1 and 14 in 6th grade. The school has continued to add a grade level to its elementary program and middle school.

2.2.1 PROPOSED ENROLLMENT CAP

Taos International School's five year projection for enrollment is outlined in the chart below. It illustrates a scheme to phase in enrollment with middle school grade levels.

2.2.2 PLANS FOR PHASED ENROLLMENT

The rationale for this phase-in program is that Taos International School believes a smaller enrollment will be more manageable for the start-up project. As the school grows; as more classroom space is acquired, TIS will be able to absorb more students. The total projected student enrollment is 360 for a K-8th grade curriculum. This would be 20 students per 9 grades.

Taos International School classes and teachers are organized by grade level. The school's first year of operation began with two Kindergarten classes, one first grade class and one sixth grade class. In the future, the school expanded through to K-8th. Each grade currently has one teacher; as is planned for future expansions. Taos International School will require an average

of twenty students per class. Their class room loads, will typically remain the same with the need for more classrooms in the future.

GRAPH OF PROJECTED ENROLLMENT CAP IDENTIFIED BY GRADE LEVEL

2.2.4 CLASSROOM LOADING POLICY

Taos International School will require an average of 20 students per class. Their class room loads will typically remain the same with the need for more classrooms in the future. Square footage per student will be the same as the required square footage per the Facilities Planning Guide.

FIVE YEAR PROJECTION

Academic Year	Number of Students	Grade Levels	Student/Teacher Ratio
Year 1 2014-15	120	K-1 & 6th	20/1
Year 2 2015-16	200	K-2 & 6 th , 7th	20/1
Year 3 2016-17	280	K-3, 6 th , 7 th , 8 th	20/1
Year 4 2017-18	320	K-4, 6 th , 7 th , 8th	20/1
Year 5 2018-19	360	K-8th	20/1
At Capacity (Enrollment Cap)	360	K-8	20/1

2.2.5 CLASSROOM NEEDS

The following chart illustrates the anticipated classroom needs, including number of classrooms to accommodate the projected enrollment. The square footage breakdown is as follows:

Classrooms: _____

Classrooms will allow for closet/storage space

Year	Grades	Square Footage	Total of Students
2014-2015	2 Kindergarten	650 sf (20 students per classroom)	40
	2 First Grade	650 sf (20 students per classroom)	40
	2 Sixth Grade	650 sf (20 students per classroom)	40
		*classroom 650 sq. ft. x 8 = 5,200 sq. ft.	

			120
2015-2016	2 Kindergarten 2 First Grade 2 Second Grade 2 Sixth Grade 2 Seventh Grade	650 sf (20 students per classroom) 650 sf (20 students per classroom) 650 sf (20 students per classroom) 650 sf (20 students per classroom) 650 sf (20 students per classroom) *classroom 650 sq. ft. x 10=6,500 sq. ft.	40 40 40 40 <u>40</u> 200
2016-2017	2 Kindergarten 2 First Grade 2 Second Grade 2 Third Grade 2 Sixth Grade 2 Seventh Grade 2 Eighth Grade	650 sf (20 students per classroom) 650 sf (20 students per classroom) 650 sf (20 students per classroom) 650 sf (20 students per classroom) 650 sf (20 students per classroom) 650 sf (20 students per classroom) 650 sf (20 students per classroom) *classroom 650 sq. ft. x 14 x = 9,100 sq. ft.	40 40 40 40 40 40 <u>40</u> 280
2017-2018	2 Kindergarten 2 First Grade 2 Second Grade 2 Third Grade 2 Fourth Grade 2 Sixth Grade 2 Seventh Grade 2 Eighth Grade	650 sf (20 students per classroom) 650 sf (20 students per classroom) 650 sf (20 students per classroom) 650 sf (20 students per classroom) 650 sf (20 students per classroom) 650 sf (20 students per classroom) 650 sf (20 students per classroom) 650 sf (20 students per classroom) *classroom 650 sq. ft x 16 = 10,400 sq. ft.	40 40 40 40 40 40 40 <u>40</u> 320
2018-2019	2 Kindergarten 2 First Grade 2 Second Grade 2 Third Grade 2 Fourth Grade 2 Fifth Grade 2 Sixth Grade 2 Seventh Grade 2 Eighth Grade	650 sf (20 students per classroom) 650 sf (20 students per classroom) 650 sf (20 students per classroom) 650 sf (20 students per classroom) 650 sf (20 students per classroom) 650 sf (20 students per classroom) 650 sf (20 students per classroom) 650 sf (20 students per classroom) 650 sf (20 students per classroom) *classroom 650 sq. ft. x 18 = 11,700 sq. ft.	40 40 40 40 40 40 40 40 <u>40</u> 360

COMMON AREAS:

1. Classroom 650 square feet each x 18 = 11, 700 sq. ft.

The general classroom space aesthetics at TIS should not be different from other schools. Colors should not be too bright or overbearing.

2. Multipurpose Room 1,500 square feet x 1 = 1,500 sq. ft.
Multipurpose room will be sized to accommodate 90-110 students, respectively, at any given time. Multipurpose Room will be utilized as a Response to Intervention (RTI) classroom, during inclement weather and also an eating area for students. TIS is providing free food services-Breakfast and Lunch.

3. Library/Tech Center 650 square feet x 1 = 650 sq. ft.

4. Music Room-650 sq. ft. x 1 = 650 sq.ft.

5. Art Room -650 square feet x 1=650 sq.ft.

All of the above are sized to accommodate one full grade, per the square footage chart.

ADMINISTRATION:

1. Office Space 100 square feet (Head Administrator/ School Director, Office Manager, Specialists including PT, OT, Speech and other required resources) x 5 = 500 sq. ft.
Administrative spaces should be equipped with storage space as well. The administrative offices should have clear site lines to the main campus entry and be provided with storage space as well as a print copy room.

2. Storage, Bathrooms, Hallways approximately 4,000 square feet.

Grand Total: 20,300 sq. ft. needed by 5th year.

2.3 SITE AND FACILITIES

Taos International School secured leased-property, that is suitable for the implementation of the school's educational program. Taos International School has secured a facility large enough to accommodate a student body of 360 students. The Governing Council established participated in the decision-making process of the school facility.

2.3.1 LOCATION/SITE

Below are photographs of facility located on 118 Este Es Rd, Taos, NM 87571. ADA parking spaces are available and meet all required safety standards. It has paved circulation, and each building entrance is also paved.

IMPORTANT ASSUMPTIONS:

- A second third grade classroom will be added as enrollment increases.
- A 4,000 sq. ft. portable building will be added to campus as enrollment increases.

PLAYGROUND AND PHYSICAL EDUCATION NEEDS:

- Playground is established and CES approved.
- More playground structures will be added as school grows.
- During inclement weather, multi-purpose room is utilized for physical educational needs.

Photograph #1- Playground

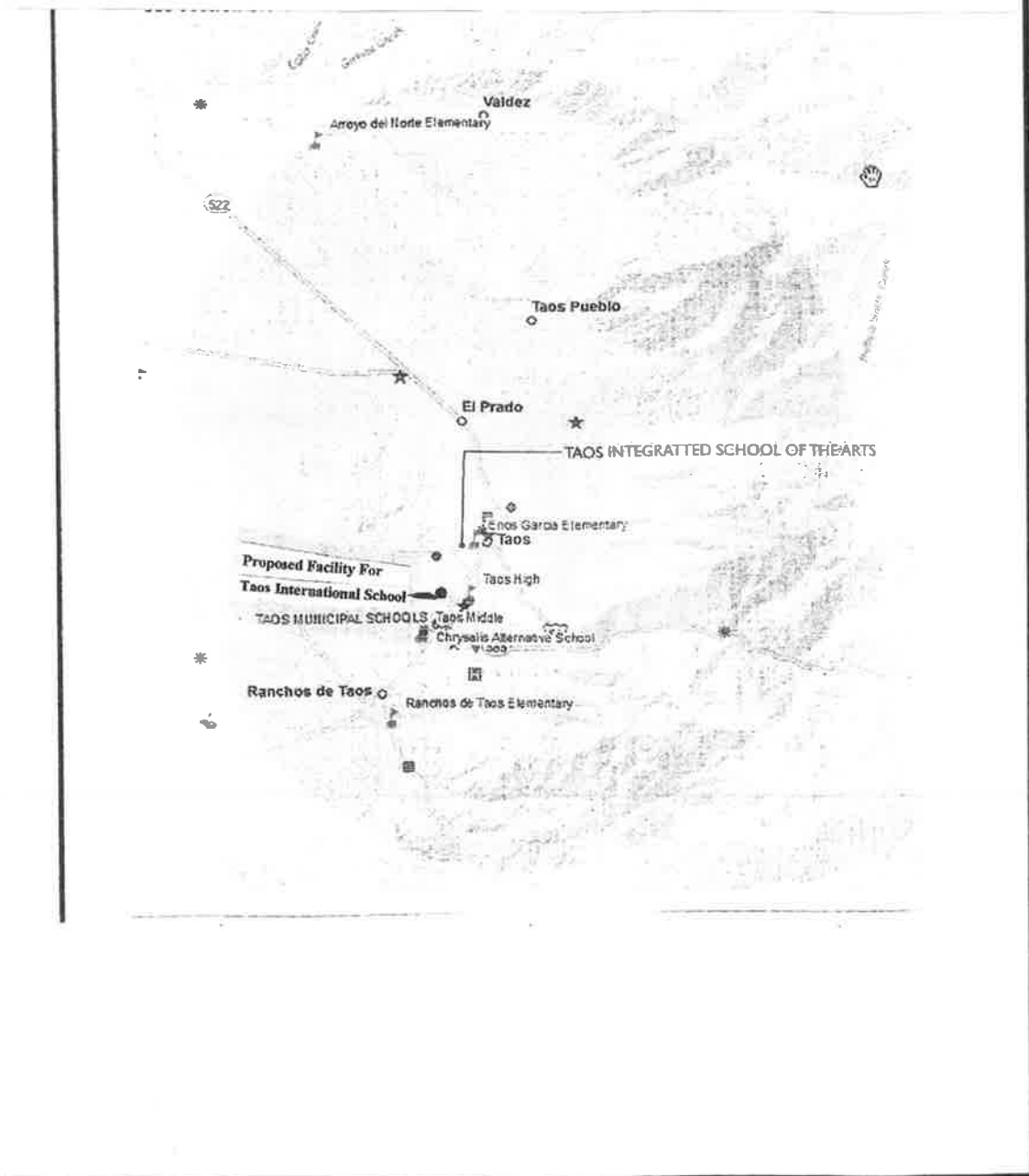
Photograph #2- Front view of Building One (K-3rd grades)



Photograph #3- Front view of Building Two (4th-8th grades)



Map of Taos Municipal Schools surrounding area where facility houses Taos International School is located.



2.3.4 FACILITY EVALUATION

PSFA performed an assessment on April 27, 2017. PSFA was pleased to advise that the assessment which included both Building One and Building Two, has resulted in a weighted New Mexico condition Index (wNMCI) score of 2.10% which is better (lower is better) than the current wNMCI statewide average of 16.79% as required by this statute.

3. PROPOSED FACILITY REQUIREMENTS (ED Spec)

3.1 Facility Goals and Concepts

3.1.1

In complying with HB283 Public School Facilities, Nadine M. Vigil, Head Administrator/Director worked closely with PSFA in acquiring a building that met HB283 requirements.

3.1.2 CONCEPTS

Taos International School's philosophy and instructional approach is research-based and incorporates best-practices in all aspects of instruction. TIS' philosophy that students learn through powers of observation and creativity outlines a need for flexible teaching spaces that are easily rearranged and spacious. The aesthetic of the spaces at TIS will be energetic, with copious day lighting and open plans. Outdoor education also plays a strong role. The outdoor learning environment should be equally flexible and handicapped accessible.

Spatial relationships, classroom clustering, and supplementary spaces also play a critical role in the success of TIS's curriculum. Kindergarten-2nd grade classrooms, 3rd-5th grade classrooms as well as 6th – 8th grades should be clustered. Special Education should be clustered with respective ancillary spaces; the nurse, counselor, and administration.

SAFETY

TIS' has worked hard along with Landlord to ensure campus has been renovated to ensure buildings are suitable and safe for the students as a learning environment.

SECURITY

As part of TIS' plan to secure campus, a secure perimeter, surveillance cameras, electronic gates, etc. will be utilized to provide better security for the students. The plan will also include keeping out unwanted visitors as well as making the site more easily monitored.

SUSTAINABILITY

TIS is interested in the sustainability of its campus both as a duty and as a means to educate.

SPACE FLEXIBILITY

TIS' curriculum requires that each class be spacious and flexible enough to support numerous teaching atmospheres within classroom. Some of the teaching spaces that need to be incorporated in the classroom space are quiet reading areas including space for book shelves, standard teaching space with a whiteboard, promethean and projector, a smaller circular

teaching area, casework for supply storage. The campus is also flexible for recess events and outdoor teaching.

COMMUNITY USE

TIS does not currently have any plans to make the campus available for community use.

3.2 SPACE REQUIREMENTS

3.2.1 SPACE SUMMARY

The proposed facility is 10,000 square feet and would house with renovations the first year of TIS operation if approved. The attached building with an additional 8,000 sq. ft. would allow for growth.

Classrooms:

2 Kindergarten	650 sq. ft.	(20 students @ 32.5 sf/student)
2 First Grade	650 sq. ft.	" "
2 Second Grade	650 sq. ft.	" "
2 Third Grade	650 sq. ft.	" "
2 Fourth Grade	650 sq. ft.	" "
2 Fifth Grade	650 sq. ft.	" "
2 Sixth Grade	650 sq. ft.	" "
2 Seventh Grade	650 sq. ft.	" "
2 Eighth Grade	650 sq. ft.	" "
1 Special Education	650 sq. ft.	" "
Storage per classroom	30 sq. ft.	

COMMON AREAS

Multipurpose Room	1500 sq. ft.	(90 students @ 17 sf/student)
Library/Computer Lab	650 sq. ft.	(20 students @ 15 sf/student)

Multipurpose room is sized to accommodate 90-110 students, respectively, at any given time.

Multipurpose room is utilized as a Response to Intervention (RTI) classroom, Physical Education classroom, indoor area for inclement weather along with serving breakfast and lunch area. TIS is providing free food services to students. Students are allowed to bring their own lunch if they wish.

Music Room

A 650 sq. ft. Music Room has been constructed with good acoustics and with little to no sound leakage to adjacent rooms. Also, there is enough storage space for music instruments and chairs, either in built in casework or closet space.

Art Room

A 650 sq. ft. Art Room has been constructed to accommodate one full grade, per the square footage chart. There is enough storage space for Art supplies either in built in casework or closet space.

Physical Education

Physical Education activities are held in 1500 sq. ft. multi-purpose room which accommodates one full grade per the square footage chart.

Library/Tech Center

A 650 sq. ft. Library/Tech center is sized to accommodate one full grade, per the square footage chart.

ADMINISTRATION:

Head Administrator/School Director	100 sq. ft.
Administrative Assistant/attendance Clerk	100 sq. ft.
Counselor/Nurse	100 sq. ft.
Work/Break Room	100 sq. ft.
Ancillary	100 sq. ft.

Administrative spaces are equipped with storage space as well. The administrative offices have clear site lines to the main campus entry and are provided with storage space as well as a print copy room.

Storage, Bathrooms, Hallways approximately 4,000 square feet.

4. CAPITAL PLAN: Taos International School applies for grants, federal funds, and state funds available to charter schools. TIS also receives SB-9 funds to meet the campus needs.

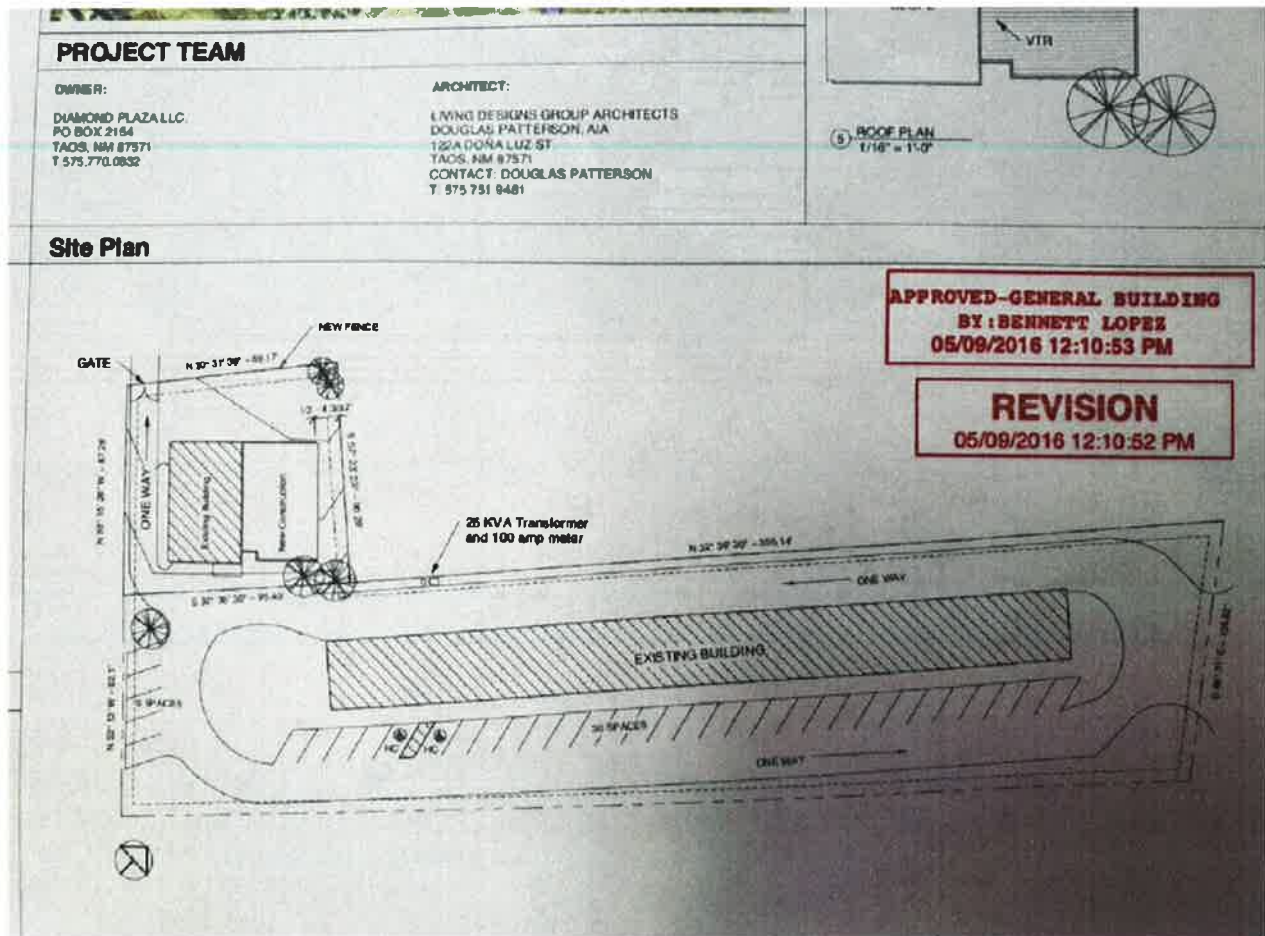
5.MASTER PLAN SUPPORT MATERIAL

5.1 SITES AND FACILITIES DATA TABLE

- NAME OF FACILITY-TAOS INTERNATIONAL SCHOOL
- State ID#-555
- Physical Address-118 Este Es Rd
- Date of opening-2014-2015 school year
- Dates of major additions and renovations-2013, 2014, 2015, 2016.
- FCI Index and NMCI-2.10% (April 27, 2017)
- Site owned or leased-If approved, site is being leased
- Total building area gross sq./ft.-20,300
- Site acreage-4 acres
- Total # permanent general classrooms-18 by fifth year
- Total # of permanent specialty classrooms-1
- Total # of portable classrooms-0
- Total number of classrooms-19 by fifth year
- Percentage of portable classrooms to total permanent classrooms-no portable classrooms
- Total enrollment current year-140 (2018-2019 SY)
- Number of gross sq. ft. per student per school facility

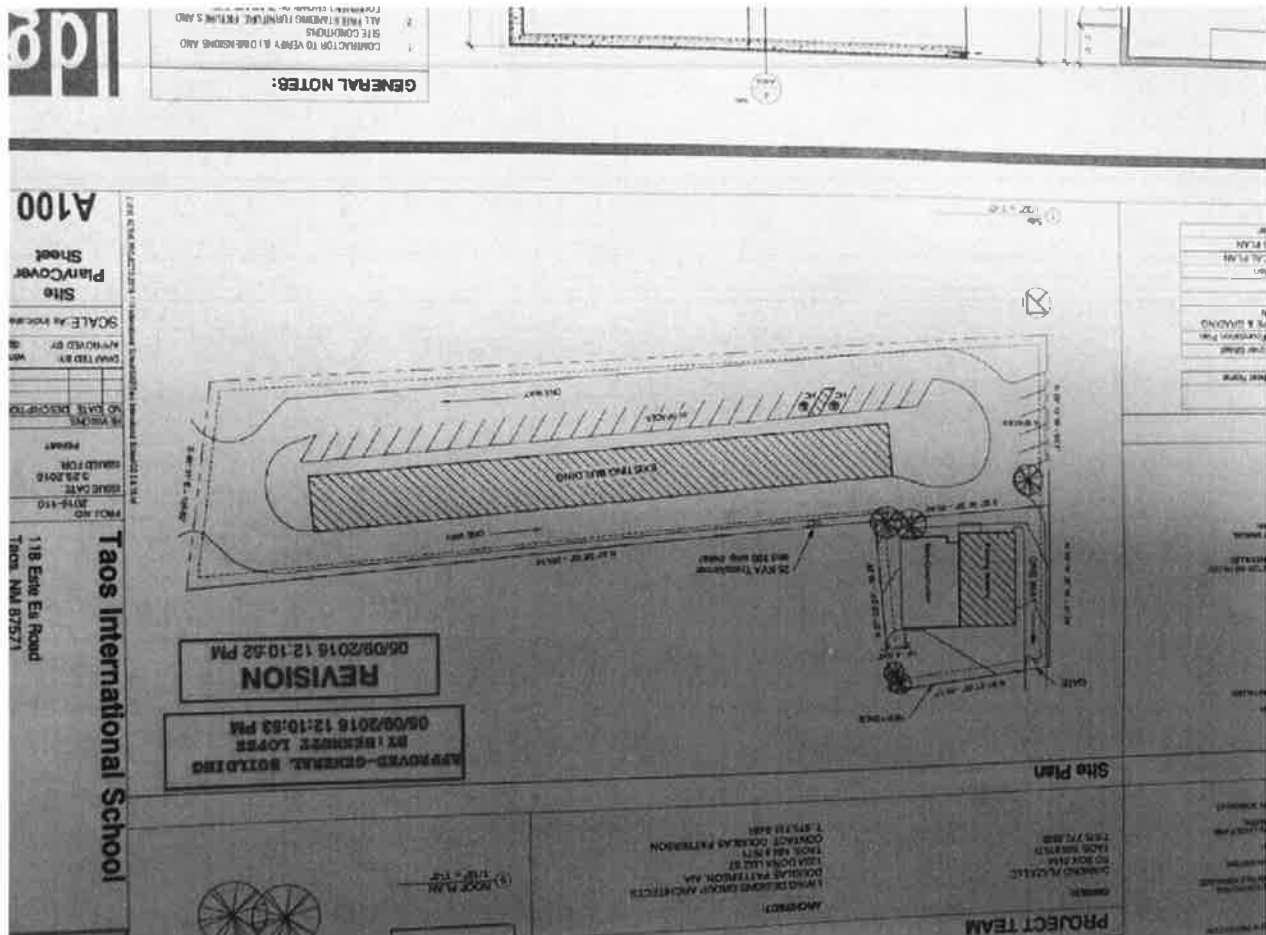
GRADE	SF	#OF STUDENTS	
KINDERGARTEN	650 SF	20 STUDENTS @ 32 SF/STUDENT	
FIRST GRADE	650 SF	"	"
SECOND GRADE	650 SF	"	"
THIRD GRADE	650 SF	"	"
FOURTH GRADE	650 SF	"	"
FIFTH GRADE	650 SF	"	"
SIXTH GRADE	650 SF	"	"
SEVENTH GRADE	650 SF	"	"
EIGHTH GRADE	650 SF	"	"

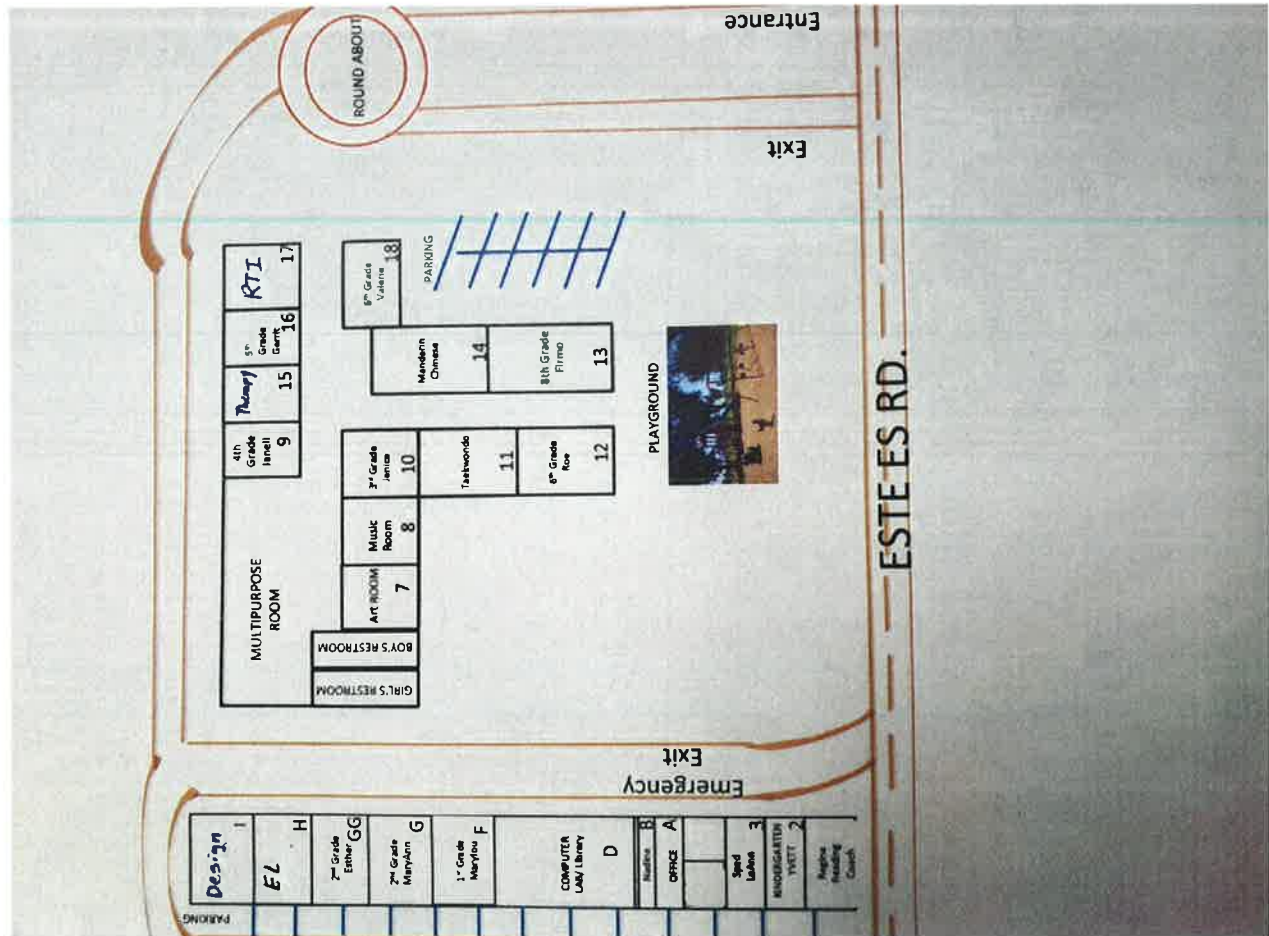
5.2 SITE PLAN:



SCALED SCHOOL SITE PLAN:

1/32"=1 ft. by scale.





FAD FORMS UPDATED:

5.8 DETAILED SPACE AND ROOM REQUIREMENTS (ED SPEC)

5.8.1 TECHNOLOGY AND COMMUNICATIONS CRITERIA: Technology Services, Lab Dell computers, classroom Dell computers (teachers), Telephone system, Hardware (PCs), Software (Microsoft Office, Photoshop), Office Printers (laser), Wireless Internet Service , Office Supplies, etc. will be required to meet the campus needs.

5.8.2 POWER CRITERIA: Taos Net

5.8.3 LIGHTING AND DAY LIGHTING CRITERIA: The aesthetic of the spaces at TIS will be energetic, with copious day lighting and open plans.

5.8.4 ENVIRONMENTAL CONDITIONING CRITERIA

5.8.5 CLASSROOM ACOUSTICS CRITERIA: Classrooms should be constructed with good acoustic and with little to no sound leakage to adjacent rooms.

5.8.6 FURNISHING AND EQUIPMENT CRITERIA: Office desks, office chairs, office bookshelves, administrative desks, administrative chairs, administrative bookshelves, Fire proof cabinets, fax machine, lateral file drawer cabinet, folding chairs, folding tables, miscellaneous supplies; power strips, extension cords, flash drives, etc., classroom (teacher) HP Printers, Classroom (teacher) desk, Classroom teacher chair, Science Equipment (scales, model rockets, glass wear, safety supplies, etc), E-Series Compound Microscope, NexStar 4SE Telescope, Center for Hands-On-Learning Science Kits (Physical Science, Earth/Space, Life), Music Supplies (violins, other music instruments, sheet music, etc.), Art class supplies (easels, paint brushes, paint), Language Learning Supplies (pocket charts), Overhead Projector, Special Education Class Supplies (ADA Furniture, etc.) Math Equipment (Calculators, Rulers, Scales, Charts, etc.) Recess Equipment (Ball, Games, etc.), DVD/Blu-Ray Player, Canon 10.1 Megapixel Rebel Camera, HD Projectors, LCD Projectors, Deluxe Portable PA System, Student Chairs (small, grades 1-2, 25 per classroom), Student Chairs, (large, grades 3-8, 25 per classroom), Student Wood Chairs (Kindergarten), Student Desks (open front, grades 1-8th per classroom), Bulletin Boards, Dry Erase Boards, Trash cans, Bookcase, Bookcase (mobile), Student Computer Lab, Laptops, Classroom Supplies (Paper, pencils, globes, maps, etc.), Athletic/Equipment (Martial Arts, Soccer, gymnastics), class set of Student Health Supplies, Refrigerators (one for health services, the other general use), Mass Production Copier (paper for copier, toner, etc.) plus Instructional Materials.

5.8.7 TABLE TYPES: Kindergarten Wood Tables; classroom tables, kidney shaped tables; computer lab tables; cafeteria tables; Computer Lab Tables,

5.8.8 STORAGE TYPES: Wardrobe, Storage Cabinets, etc.

5.8.9 CRITERIA SHEETS: Not Applicable.

5.9 SUBMISSION

5.9.2 FINAL ELECTRONIC COPY

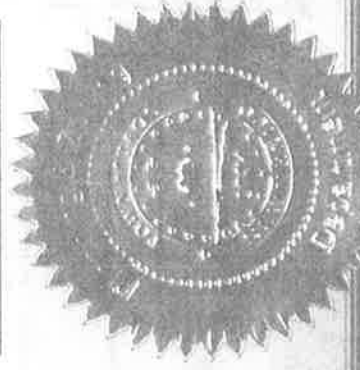
TOWN OF TAOS CERTIFICATE OF OCCUPANCY

THIS CERTIFICATE HAS BEEN ISSUED PURSUANT TO THE REQUIREMENTS OF SECTION 111 OF THE 2009 INTERNATIONAL BUILDING CODE CERTIFYING THAT AT THE TIME OF ISSUANCE THIS STRUCTURE APPEARED TO BE COMPLIANCE WITH THE VARIOUS ORDINANCES AND CODES OF THE TOWN OF TAOS REGULATING BUILDING CONSTRUCTION OR USE. THE BUILDING OFFICIAL IS AUTHORIZED TO SUSPEND OR REVOKE A CERTIFICATE OF OCCUPANCY WHEREVER THE CERTIFICATE IS ISSUED IN ERROR, ON THE BASIS OF INCORRECT INFORMATION SUPPLIED, OR WHERE IT IS DETERMINED THAT THE BUILDING OR STRUCTURE OR PORTION THEREOF IS IN VIOLATION OF ANY ORDINANCE, REGULATION, OR ANY OF THE PROVISIONS OF THIS CODE.

Use Classification: Commercial Zone: HCPD
Building Address: 118 Este Es Road
Group: E Construction Type V-B Building Permit No. BP2014-34
Contractor: Diamond Finish Inc. License No. 92593
Owner of Building: Diamond Plaza LLC
Owner Address: PO Box 2154, El Prado, NM 87529

Julia Skour
Building Official

24 June '14
Date Issued:





State of New Mexico
Public School Facilities Authority

Jonathan Chamblin, Director; Martica Casias, Deputy Director

1312 Basehart Road, SE, Suite 200, Albuquerque, NM 87106
(505) 843-6272 (Phone) | (505) 843-9681 (Fax)

Website: www.nmpsfa.org

September 25, 2020

Nadine Vigil, Head Administrator/Director
Taos International School
118 Este Road, Taos New Mexico

Taos International Charter School

RE: 2020-2021 Published wNMCI Score

Greetings Director Vigil,

At your request, the Public School Facilities Authority (PSFA) is providing you with your current weighted New Mexico Condition Index (wNMCI) Score.

PSFA is pleased to advise you that your wNMCI meets and exceeds the current average wNMCI. Your wNMCI is 6.82% which is better (lower is better) than the current wNMCI statewide average of 21.15%.

Please feel free to contact me if you have any questions or concerns regarding this correspondence. I can be reached at (505) 468-0274.

Respectfully,

Martica Casias, Deputy Director
Public School Facilities Authority

Cc; Alyce Ramos, PSFA Analyst

CERTIFICATION B
No Public Facility Available

The undersigned hereby certify under penalty of perjury that Taos International has diligently sought space in public buildings and that such public buildings are not available or have been determined not to be adequate for the education program of Taos International.

Charter School Governing Board President

By: [Signature]
Print Name: Cliff Johnson
Print Title: G.C. President
Date: 4/8/20

STATE OF NEW MEXICO)
) ss.
COUNTY OF BERNALILLO)

On this 8 day of April, 2020, before me, the undersigned officer, personally appeared Cliff Johnson, known to me to be the person whose name is subscribed to the within instrument, and acknowledged executing the same for the purpose therein contained.

[Signature]
Notary Public

My Commission Expires:

November 8, 2020



Charter School Principal / Administrator

By: [Signature]
Print Name: Nadine M. Vigil
Print Title: Head Administrator / Director
Date: 4-8-2020

STATE OF NEW MEXICO)
) ss.
COUNTY OF Taos)

On this 8 day of April, 2020, before me, the undersigned officer, personally appeared Nadine M. Vigil, known to me to be the person whose name is subscribed to the within instrument, and acknowledged executing the same for the purpose therein contained.

[Signature]
Notary Public

My Commission Expires:

November 8, 2020



Use note:

This certification is intended for use by charter schools **not** housed in a building that is owned by the charter school, a nonprofit entity specifically organized for the purpose of providing the facility to this charter school, a school district, the state, an institution of the state, another political subdivision of the state, the federal government or one of its agencies or a tribal government or subject to a lease-purchase arrangement that has been entered into and approved pursuant to the Public School Lease Purchase Act.

E. Facility and Assurances

A description of the charter school facilities and assurances that the facilities are in compliance with the requirements of Section 22-8B-4.2 § NMSA 1978.

The school must provide a copy of the facility lease agreement in APPENDIX D – Lease Agreement.

The school must provide a narrative description of its facilities. The school should attach any facility plans or the school’s Facility Master Plan in **Appendix H –Facility Master Plan**.

In addition, attach a copy of the building E Occupancy certificate and a letter from the PSFA with the facility NMCI Score as **Appendix I – E-Occupancy certificate and Appendix J – New Mexico Condition Index letter from PSFA**, indicating that the school facility meets the requirements of 1978 NMSA §22-8B-4.2(C)

If the charter school is relocating or expanding to accommodate more students, the school must also provide assurances that the facilities are in compliance with the requirements of 1978 NMSA §22-8B-4.2, – Additional Facility Assurance.

School response:

Taos International School (TIS) is located within the boundaries of Taos County. It is the only school that is visible from the main highway in Taos, NM. It is approximately half a mile from the entrance to the main highway, making accessiblitiy easy for students and parents. TIS has maintained a lease agreement with Diamond Plaza LLC. (Please see Appendix D) . TIS maintains an E-Occupancy certificate, (Please see Appendix D for pertinent documents such as E-Occupancy, Facility Map Diagram and PSFA with the facility NMCI Score indicating that the school facility meets the requirements at Subsection C of 22-8B-4.2 NMSA (C).

The current facility, which is 24,416 square feet, is comprised of: two offices, 19 classrooms, 1 Art Classroom, 1 Music Classroom, 1 Library, 13 restrooms, a multipurpose room utilized as a cafetera/gym, and an enclosed outdoor palyground area, (Please see Appendix H- Facily Master Plan). The current facility is appropriate for fulfilling the school vision of “Students at Taos International School will learn to respect themselves, their community and the larger diverse world in whtich they live while developing the skills necessary to achieve their goals.” TIS follows Section 22-8B-4.2 NMjSA pertaining to charter school facility requirements. TIS’ facility will accommodate 360 students—2 classes per grade K-8.