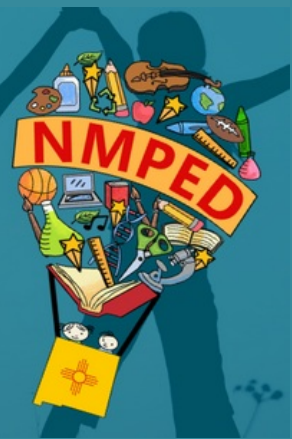
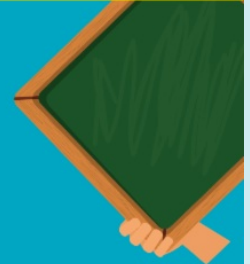


# Assessment Bureau

A DTC Newsletter  
June 16, 2002



## KEY DATES



June 21	DLM Parent Portal Data Available
June 22-24	Inspire Conference
July 11-14	Cognia Standard Setting



# Important

Please ensure you have returned all testing ACCESS materials.



### SY2022-23 Assessment Schedule

DTCs are encouraged to review the [DRAFT 2022-23 Assessment Schedule](#). Click [here](#) to provide feedback. It is important that DTCs view this as a draft, and some details may be subject to change until finalized.

# Teachers Needed for Cognia Summer Meetings

The PED and Cognia are seeking additional educator support to serve on this summer's assessment committees.

Overnight accommodations, meals, mileage reimbursement, and an honorarium will be provided to selected participants for in-person meetings.

An honorarium or substitute reimbursement will be provided for participants in virtual meetings.

- Science teachers are needed for Standard Setting  
**July 11-15**, in-person at the Albuquerque Sheraton Airport. Teachers with experience teaching science in Grades 5 and 8 can [apply](#).
- Bilingual teachers are needed for Standards Validation  
**August 1-2**, virtual. Spanish-speaking teachers with experience in ELA and math in Grades 3-8 and Spanish-speaking teachers with experience in science in Grades 5, 8, and 11 can [apply](#).
- ELA and Math teachers are needed for iMSSA Standards Validation  
**August 1-2**, virtual. Educators with experience teaching ELA and math in Grades 3-8 can [apply](#).
- Science teachers are needed for Data Review  
**August 16-17**, virtual. Educators with experience teaching science in Grades 5, 8, and 11 can [apply](#).

## DLM Parent Portal

Results from the spring 2022 assessment will be available to LEAs to upload into the [Kite Parent Portal](#) on June 21. The process of making the Parent Portal available to parents and guardians is at the discretion of individual districts and charter schools. For complete instructions on establishing and maintaining all connections within the portal, review the [Kite Parent Portal User Guide for District Staff 2021-22](#). The [Kite Parent Portal User Guide](#) is also available on the [DLM Parent Resources](#) page.



## Superintendent Verification Forms

Notices were sent out to districts that still have not submitted the completed [Superintendent Verification Forms](#) for the 2022 summative testing administration. Please submit all forms to [ped.assessment@state.nm.us](mailto:ped.assessment@state.nm.us) as soon as possible as the original deadline has already passed.



Cognia Professional  
Learning Opportunities



Pathway2Careers

The Cognia Director of Professional Learning and former New Mexico educator, Greg Howell, is excited to share [Cognia's Fall 2022 professional learning opportunities](#). Greg is available to present these or customized sessions that most appropriately fit district or school needs. For more information or to schedule sessions, the district administration should reach out to [Greg](#) directly.

## Math Curriculum

Pathway2Careers is a career-focused math curriculum available to all New Mexico schools at no cost. The 500+ lessons along with quantile assessments can supplement existing curricula or stand alone. This curriculum is Common Core-aligned, is on the PED-approved math supplemental material list, and professional learning provided by MC2 offers seamless integration and implementation. For more information, visit their [website](#) or reach out to [Alexandra Lutz](#).

NMPED Assessment Bureau | [Click here for website](#).

Email questions to [ped.assessment@state.nm.us](mailto:ped.assessment@state.nm.us)