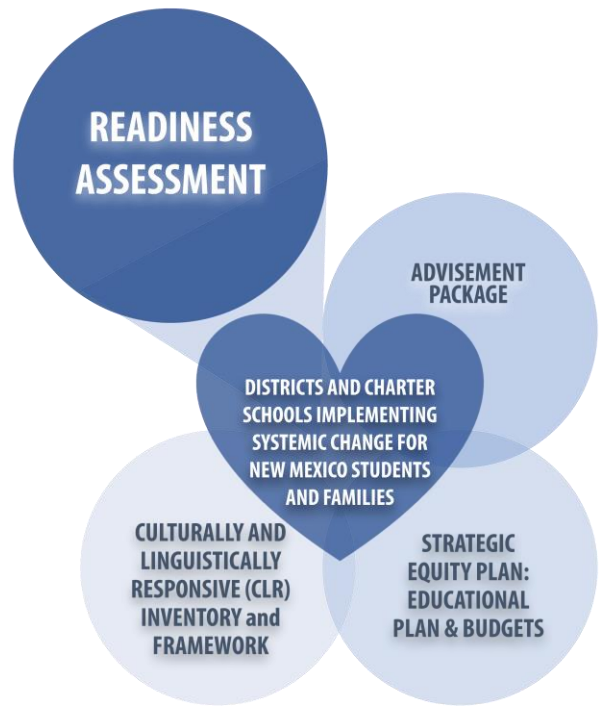


SCHOOL BOARDS AND GOVERNANCE BOARDS READY TO LEAD WITH EQUITY AT THE FOREFRONT

IS THE SCHOOL BOARD OR GOVERNANCE BOARD MAKING DECISIONS ANCHORED IN THE READINESS ASSESSMENT DATA? SAMPLE STATEMENTS FROM THE READINESS ASSESSMENT:

- ✓ Our English Learner program is designed for English Learners to participate meaningfully in ALL instructional programs with language supports.
- ✓ Our district/charter school uses materials that support the development of oral and written academic English for Native American English Learners and account for language arts, science, social studies, and math.
- ✓ Our district/charter school's Individualized Education Program teams discuss the whole child including the English language proficiency level of English Learners with disabilities.
- ✓ Our district/charter school creates conditions where programs or services are planned, designed, implemented, and evaluated respecting and accounting for our English Learner students' and families' cultural and linguistic values and heritage.
- ✓ Our district/charter school has conducted a needs assessment to determine what services Native American students need to assist them in graduating from high school and becoming career-and-college-ready.
- ✓ Our district/charter school collaborates with sovereign Nations, Tribes, and Pueblos to ensure the maintenance of languages for Native American students.
- ✓ Our district/charter school provides professional development to principals and other leaders about the Individuals with Disabilities Education Act (IDEA).



THE MARTINEZ/YAZZIE READINESS ASSESSMENT

Supports Equity Councils and district and charter school leadership in having meaningful and specific conversations about current services and programs that impact at-risk students. The statements are aligned to the findings is the case.

MAKING POLICY AND BUDGET DECISIONS WITH INTENTIONALITY AND OUTRAGEOUS LOVE FOR:

Our at-risk students—as identified in the Martinez and Yazzie Consolidated Lawsuit—are students who are economically disadvantaged, English learner students, Native American students, and students with disabilities.



**WORK WITH YOUR EQUITY COUNCIL TO
REVIEW AND IMPLEMENT THE RESULTS OF
YOUR READINESS ASSESSMENT NOW.**

Readiness Assessment questions available on the NMPED Martinez and Yazzie Readiness Assessment subpage:
<https://webnew.ped.state.nm.us/bureaus/yazzie-martinez-updates/readiness-assessment/>

