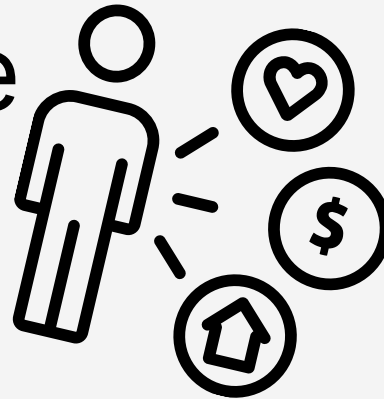




# Asset Assessment Definition

**Definition:** identifies the assets of individuals, formal institutions and agencies, and informal organizations in the community that can be mobilized to meet the needs in the needs assessment.



1

The SBLT conducts a school and community wide asset assessment

2

Maps and identifies community supports, services, partners, values, strengths

3

Details in the asset assessment includes current and potential access in each key practice

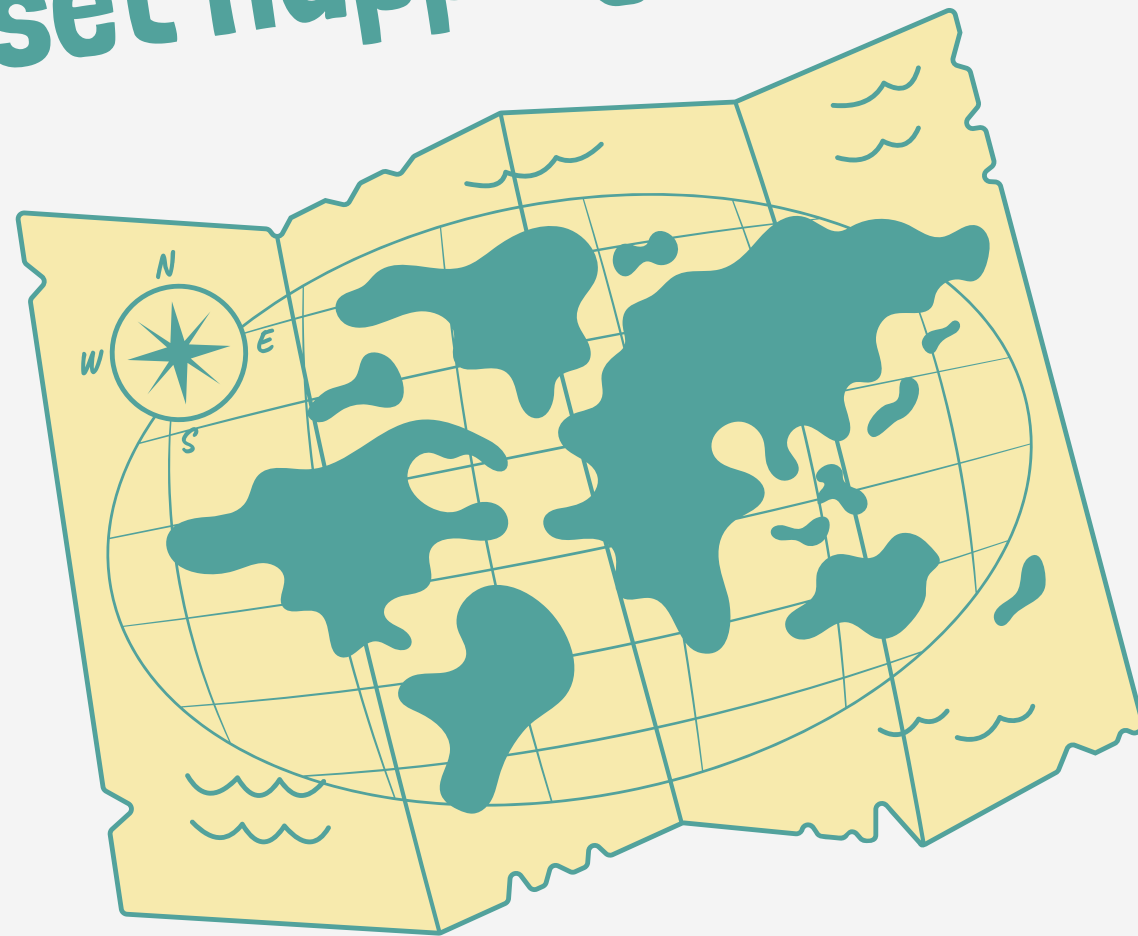


# Asset Assessment Application



**Application:** the SBLT will conduct the Asset Assessment with families, students and community

## Asset Mapping



### **Asset Mapping**

Create a map of assets that include current partners, potential partners, supports, services, values of the community, etc.

### **Sticky Note Brain Storm**

Use sticky notes to come up with as many strengths and assets as you can; put sticky notes on poster

### **Create the Report**

Gather your brainstorming mapping and put it in a report; include data gathering and results

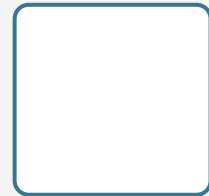


# Asset Assessment MLSS

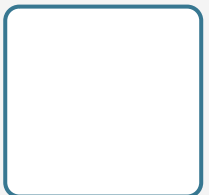


**Core Implementation Strategies:** is the SBLT strengthening the core implementation strategies for Asset and Needs Assessment?

## Asset Assessment



The community school coordinator and principal, in collaboration with the SBLT, plans and implements a consistent, ongoing, effective process to develop a campus and community asset assessment in order to understand the community values and to identify strengths.



Specific details in the asset assessment include access to and opportunities related to the 6 key practices.



For example, opportunities and access for partnerships with nonprofit organizations, faith- and community-based organizations, institutions of higher education, healthcare institutions, businesses, advocacy organizations, and other community entities.

**Asset Assessment  
MLSS self-assessment  
variables**

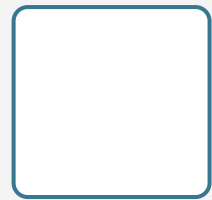


# Asset Assessment MLSS



**Core Implementation Strategies:** is the SBLT strengthening the core implementation strategies for Asset and Needs Assessment?

## Asset Assessment



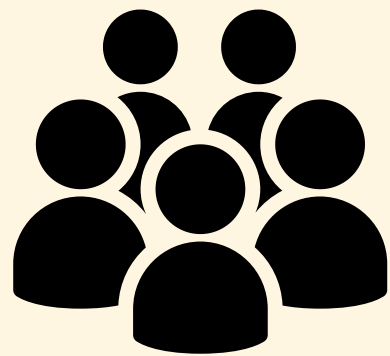
Access and opportunities for the 6 Key Practices: (a) integrated systems of supports; (b) expanded, culturally enriched learning opportunities; (c) powerful student and family engagement; (d) collaborative leadership, shared power and voice; (e) (supplemental/not required) information about rigorous community-connected classroom instruction; and (f) (supplemental/not required) culture of belonging, safety and care.



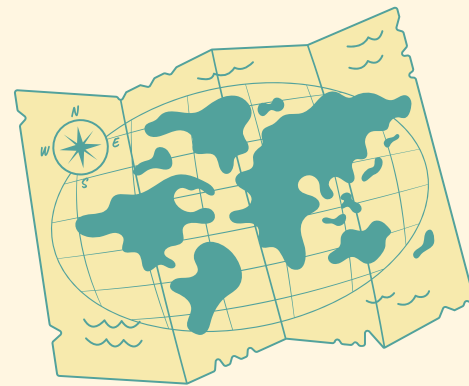
# Asset Assessment Template



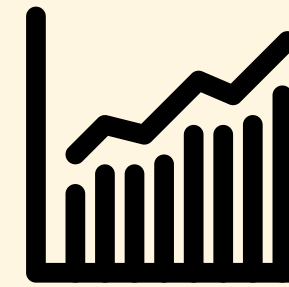
**Template:** these template questions can be used for the end of year CS strategic plan report to upload as evidence



Who attended the asset mapping? Was it a diverse group on the SBLT?



What findings were discovered in the asset mapping? What partners, services, strengths, etc?



Does the asset mapping include current partners, potential partners and those that need to be found?



What assets were identified for collaborating on solutions for root causes?



# Needs Assessment Definition



**Definition:** This assessment identifies the needs of students, schools, families, and the community

1

The report includes the methods of data collection, strengths and limitations of the data gathering, and key participants

2

Current and historical student, school, and community level data are gathered; both qualitative and quantitative data

3

Include the community school climate/culture, student academic achievement, attendance, behavior, family engagement and, for high schools, graduation rates and readiness for college or a career



# Needs Assessment Application



**Application:** the SBLT will conduct the Needs Assessment with families, students, staff and community

Survey



## Surveys

One way to measure outcomes, thoughtful and targeted survey questions, 90-Day plan alignment, fit into key practices, plan to repeat and track survey questions and responses

## Community Level Data

Gather neighborhood and area-level data.  
Demographic data, crime rates, neighborhood trends  
[New Mexico Community Data Collaborative](#)

## Qualitative and Quantitative

Ask survey questions, have conversations, and listen to stories  
Look at attendance, academic, and behavioral school data  
Look at community level data from outside and around the school



# Needs Assessment Application



**Application:** the SBLT will conduct the Needs Assessment with families, students, staff and community



**Small Group  
Discussions**

## Small group discussions

Conduct small group discussions with students, families, community members and staff to collect qualitative data.

## Historic and current data

Look at attendance, demographics, discipline records, community crime levels, etc. Anything your community can say about needs.

## Create the Report

Gather your qualitative and quantitative data and put it in a report; include data gathering and results



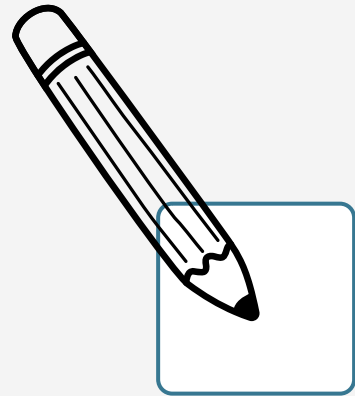


# Needs Assessment MLSS



**MLSS Variables:** is the SBLT strengthening the core implementation strategies for Asset and Needs Assessment?

## Needs Assessment



Needs assessment report is created each year by the community school coordinator, principal and SBLT. This community and school wide needs assessment report includes qualitative and quantitative data.



Current and historical student, school, and community level data are gathered.



Specific details in the needs assessment includes the key practices.



The report includes the methods of data collection, strengths and limitations of the data gathering, key participants, key findings and recommendations.

**Needs Assessment  
MLSS self-assessment  
variables**

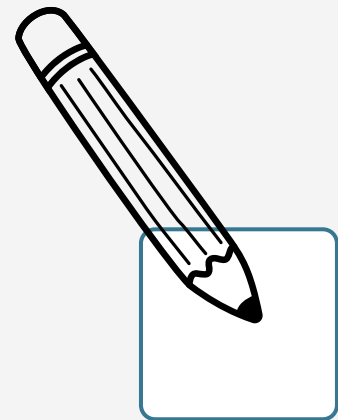


# Needs Assessment MLSS



**MLSS Variables:** is the SBLT strengthening the core implementation strategies for Asset and Needs Assessment?

## Needs Assessment



Includes the community school climate/culture, student academic achievement, attendance, behavior, family engagement and, for high schools, graduation rates and readiness for college or a career.



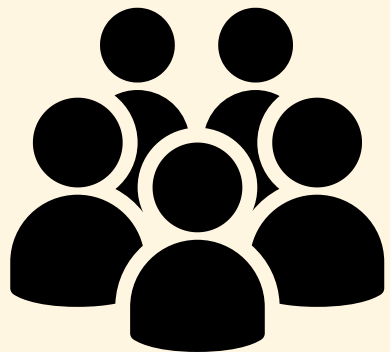
Need for 6 Key Practices: (a) integrated systems of supports; (b) expanded, culturally enriched learning opportunities; (c) powerful student and family engagement; (d) collaborative leadership, shared power and voice; (e) (supplemental/not required) information about rigorous community-connected classroom instruction; and (f) (supplemental/not required) culture of belonging, safety and care.



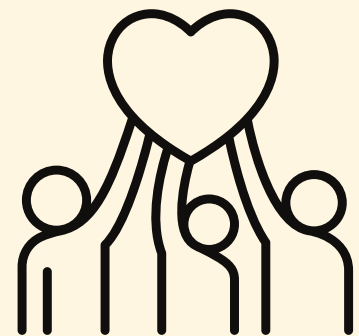
# Needs Assessment for Initiative



**Template:** these template questions can be used for the end of year CS strategic plan report to upload as evidence



Who contributed to create the needs assessment? Did the SBLT direct and plan this assessment?



What findings were discovered in the needs assessment? Did the SBLT include school level and community level data?



Does the needs assessment include quantitative and qualitative data? What are the strengths and limitations of the data gathering?



What needs were identified for focus that will be part of the CS strategic plan?