

The Role of the CS Principal

New Mexico Community School Statute:

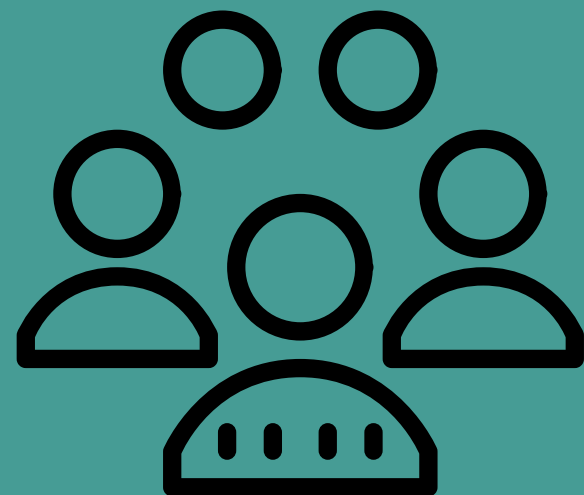
- The community school coordinator ... works collaboratively with the school principal and the site-based leadership team to assess, plan and carry out the community school framework
- "Site-based leadership team" means an interdisciplinary, school-based leadership team that includes the school principal, the community school coordinator, teachers, other school employees, families, community partners, tribal partners, nonprofit organizations, unions and neighboring community residents that guides collaborative planning, implementation and oversight



The Role of the CS Principal

CS Principal Best Practice:

- Centered in collaborative leadership and democratic processes
- Works closely with the CS Coordinator as a joint administrative team to facilitate the SBLT. Meet with the CS Coordinator (1x/week).
- Facilitate the Site-Based Leadership Team (2x/month)
- Understands that the site-based leadership team holds the governing and decision-making body of the community school strategy
- Opens the doors of the school for before, after and summer programs and welcomes community partners into the school



The Role of the CS Principal

CS Principal Should NOT:

- Leave out the CS coordinator from discussions (such as the 90-day plan) or leadership
- Create conditions where community partners feel unwelcome
- Close the school to before, after or summer programs
- Devalue the decision-making of the SBLT

