



Root Cause Analysis Definition



Definition: the SBLT conducts a root cause analysis which is a systematic investigation of the contributing and foundational (or “root”) causes of the problems that the school and community identify in the needs assessment.

1

Deliverable for
all grant years

2

SBLT identifies & categorizes the "stories, patterns, and/or trends" behind the raw quantitative and qualitative data gathered in the needs and assets assessment process.

3

The root cause analysis includes multiple, diverse perspectives as a check against bias. The analysis informs the priorities of the community school strategic plan.



Root Cause Analysis Application



Application: the SBLT will conduct the root cause analysis with families, students and community

Tree Analysis

On a large poster, put up a tree with roots. Identify the challenge (trunk) and write as many root causes on the root as possible; identify correct root causes

Sticky Note Brain Storm

Use sticky notes to come up with as many root causes as the team can come up with; identify correct root causes

Create the Report

Gather your data and put it in a report; include data gathering and results



Tree
Analysis

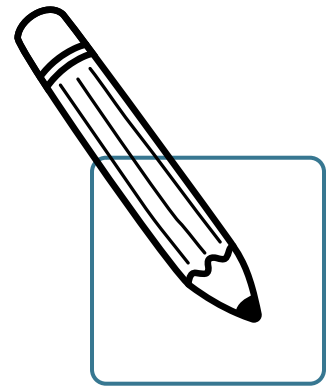


Root Cause Analysis MLSS

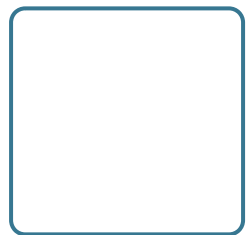


MLSS Variables: is the SBLT strengthening the core implementation strategies for root cause analysis?

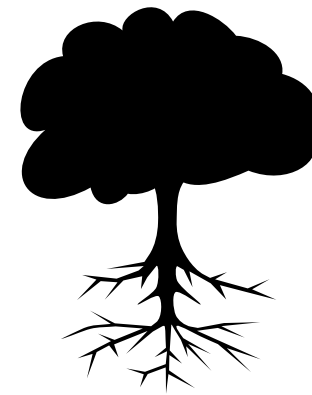
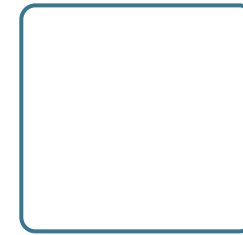
Root Cause Analysis



The SBLT conducts a root cause analysis of "stories, patterns, and/or trends" and identifies multiple possible contributing factors and core underlying issues.



The root cause analysis includes multiple, diverse perspectives that can be addressed by the classroom, SBLT, and community as a check against bias.



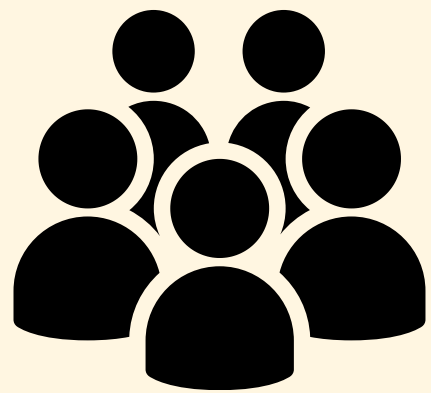
The analysis directs the priorities of the community school strategic plan. The 90-day plan root cause analysis is different from the CS root cause analysis in that the CS root cause analysis includes academic and non-academic barriers in both the school and community setting.



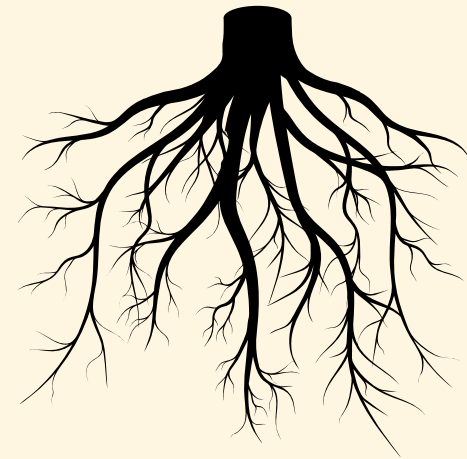
Root Cause Analysis Template



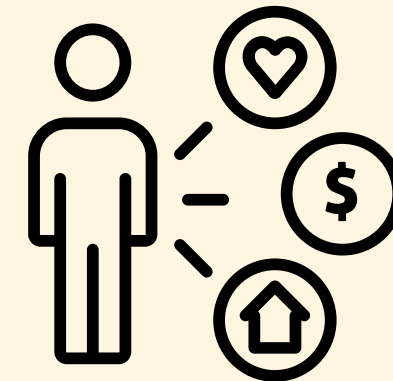
Template: these template questions can be used for the end of year report to upload as evidence of your current strategic plan



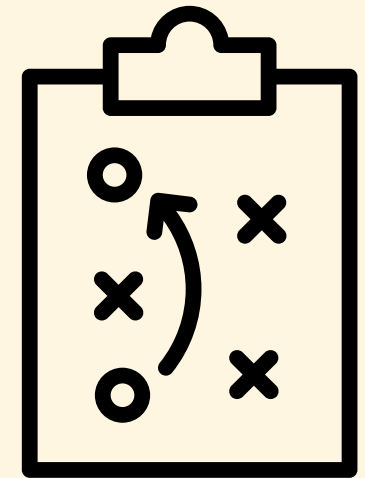
Who attended the root cause analysis? Was it a diverse group?



What findings were discovered in the root cause analysis?



How do these findings link to the asset and needs assessment?



How do the findings inform the community school strategic plan?