



Site-Based Leadership Team Definition

Definition: co-create a culture of professional learning, collective trust, and shared responsibility as the SBLT makes decisions together.



1

Governing body that develops a shared vision and goals and create participatory practices for distributing responsibilities

2

The SBLT leadership and capacity should provide long-term sustainability around school goals, decision making and plans.

3

Includes the school principal, the community school coordinator, school staff, community partners, families, and students.

Out of School

Principal

Advocacy Orgs

CS Coordinator

Businesses

School Staff

Healthcare Institution

Families

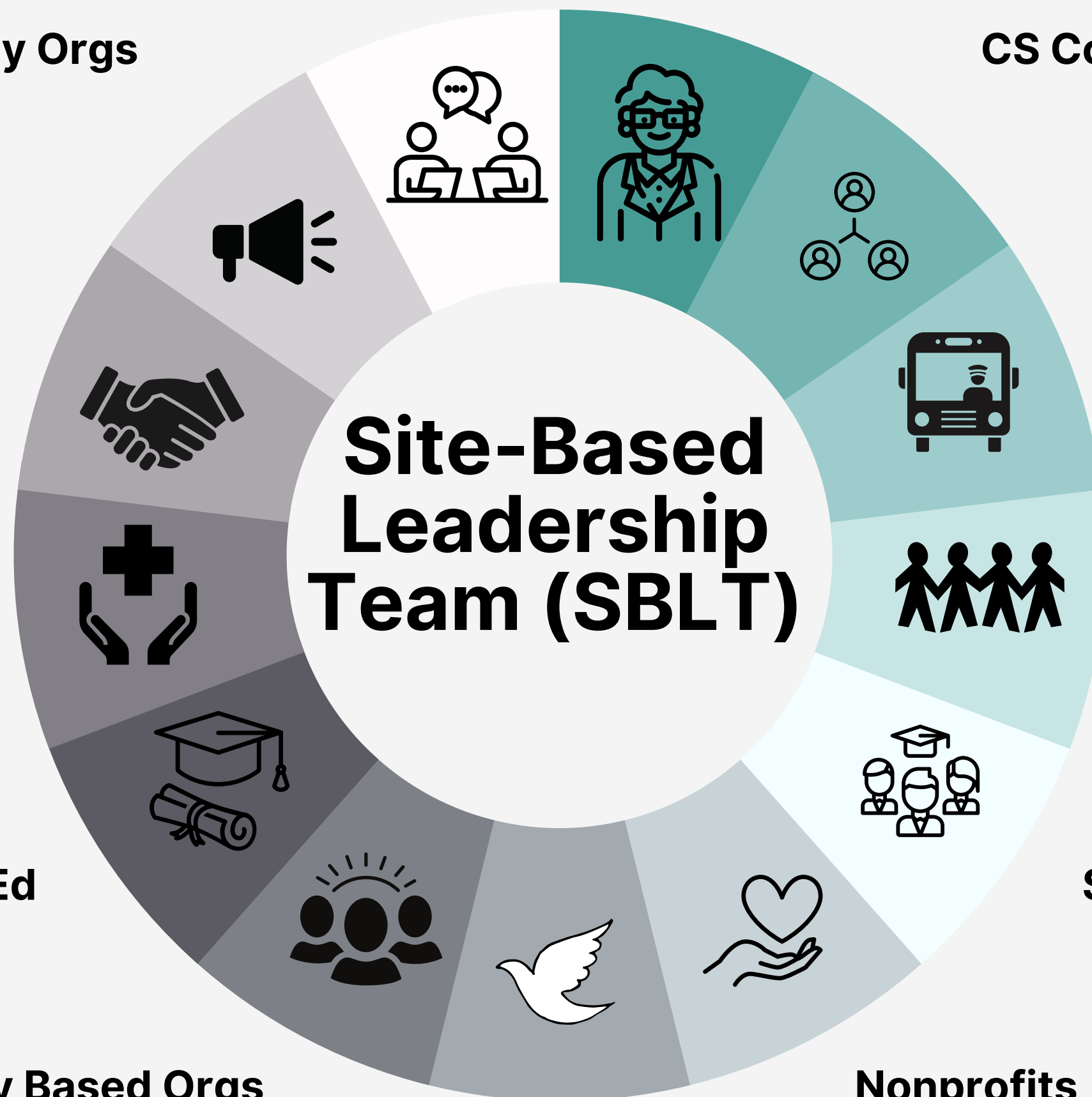
Institution of Higher Ed

Students

Community Based Orgs

Nonprofits

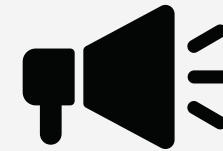
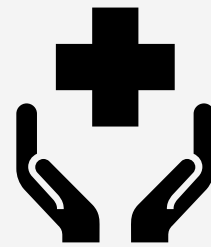
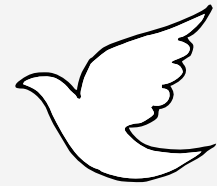
Faith Based Orgs



**Site-Based
Leadership
Team (SBLT)**



Community School Partner Definition



1

A community partner is an entity or individual that sits on the SBLT and forms a mutually beneficial partnership with the community school.

2

Mutually beneficial means the partners goals and mission are also fulfilled by participating on the SBLT and providing services for students.

3

In-kind donations and services are not a partner, unless the organization donating also sits on the SBLT and participates in the formation of the CS strategic plan.



Site-Based Leadership Team Application

Application: the SBLT will conduct the Asset Assessment with families, students and community



Collaborative Leadership



Diverse

Ensure the team is reflective of the demographics and diversity of the school and community

Meet Regularly

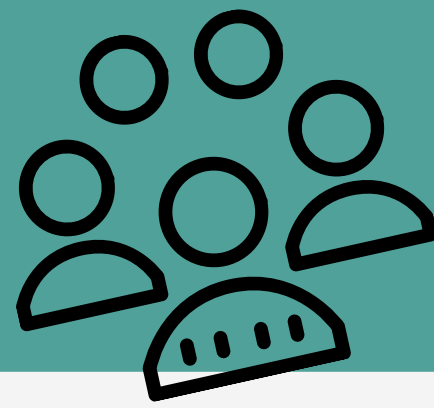
Meet regularly (2x/month) as a team with an agenda that includes training and the CS strategic plan; take notes

Shared Decision-Making

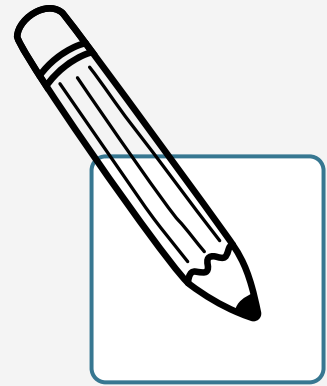
The Principal and CS Coordinator ensure that the team has decision-making power for the community school



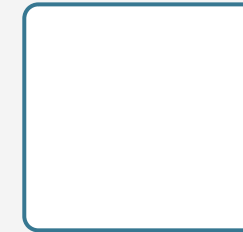
Site-Based Leadership Team MLSS



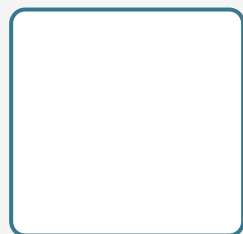
Core Implementation Strategies: is the SBLT strengthening the core implementation strategies for collaborative leadership?



The CS Principal and Coordinator meet regularly to build a relationship of trust that will support the vision of community school implementation.



Families, students, staff, principal, and community partners co-create a culture of professional learning, collective trust, and shared responsibility as they make decisions together. The site-based leadership team membership is diverse and representative of the demographic make-up of the whole-school population and the community.

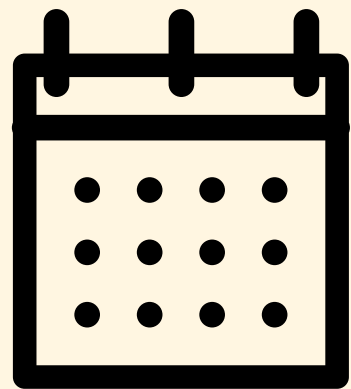


There is full participation and collaborative leadership by families, students, community and staff members. These members actively form the CS vision and jointly create the CS strategic plan. The SBLT meets twice a month during the school year.



Site-Based Leadership Team Template

Template: these template questions can be used for the end of year CS strategic plan report to upload as evidence



Who are members that sit on the SBLT? Do they come regularly? Attendance?



Does the team meet regularly? Are notes taken? Does the CS Coordinator and Principal meet often?

Is the membership diverse and representative of the school and community demographics? Are there at least 2 members of the following groups: staff, students, families and community partners?

Does the SBLT have shared power, voice and decision-making? Does the SBLT create the CS Strategic Plan together? Does school, student and community data, including that gathered in assessments, guide decision-making?