

# Early Childhood Department Tribal Intergovernmental Agreements

New Mexico Government-to-Government Indian  
Education Summit

Elizabeth Groginsky, Cabinet Secretary

Mark Hume, Policy Analyst

Jennifer Hopper, FIT Program Manager



NEW MEXICO

**Early Childhood**

Education & Care Department

# Conrad N. Hilton Grant

## Project Purpose:

- Strengthen early childhood programs within Tribes, Pueblos and Nations:
- \$500,000 a year, for a 3 year period (individual tribes or tribal organizations)
- Develop culturally relevant developmental assessments
- Culturally supportive parenting classes (with courts and ICWA Directors)
- Increase the number of Native Infant Early Childhood Mental Health Consultants
- Language and Culture preservation and/or revitalization through education, health, nutrition, and community engagement.



*Pictured: Cotillion Sneddy, ECECD Assistant Secretary for Native American Early Education and Care and Hilton Foundation Vice-Chair Linda Hilton.*

# Tribal Investment Strategy (TIS) Fund

Total FY23 Investment in TIS fund was \$1.54 million, detailed below:

- FY24 Investment has grown by \$750,000 in to a total of \$2.2 million.
- TIS projects include access to infant mental health initiatives, increasing the number of bilingual and indigenous early childhood educators, early intervention services, materials for an early childhood language immersion program, and a Montessori Certificate focused on indigenous knowledge and philosophy.

\$139,100	Program Support	Build capacity, mentorship, and technical assistance through ongoing consultation with Pueblos, Tribes, and Nations and hire one FTE to provide technical assistance and coordination for Tribal governments in developing, securing, and managing early childhood grants.
\$500,000	Family Support & Early Intervention	Grants directly to Tribal governments to increase access to Home Visiting, Early Intervention services, and Families FIRST.
\$300,000	Early Care, Education and Nutrition	Grants directly to Tribal governments to provide, technical assistance, phased planning, curriculum, and identified needs.
\$600,000	Policy Research & Quality Initiatives	Contractual services to support a range of infrastructure and workforce needs identified through Government-to-Government consultation.

# House Bill 148

- **HB 148** amends the duties of the ECECD, officially codifying as requirement ECECD's longstanding practice of entering into Intergovernmental Agreements (IGA's) with Indian Nations, Tribes, Pueblos, or Tribal organizations to plan, conduct, administer, and reimburse early childhood education and care programs.
- This bill codifies ECECD's standing practice of government-to-government interaction between ECECD and Tribal communities and stratifies ECECD commitment by allowing Tribal communities to shape their own early childhood curricula, programming, and assessments to fit their unique linguistic and cultural needs.



# Intergovernmental Agreements: *A Primer*

- An IGA is any agreement that involves or is made between two or more governments (Tribal, State, and Local) in cooperation to solve problems of mutual concern.
- IGA's between state and tribal entities are a critical component of state and tribal interaction in the tribal self-determination era (1970's to present).
- ECECD's five-year strategic plan specifically focuses on government-to-government collaboration between the agency and tribes.
- ECECD has been entering into IGA's with tribes by their request since it was established on July 1 2020.



# Elements of an IGA

- **Introduction**

- The introduction section of an IGA defines the rights and responsibilities of the parties involved (in this case, the state agency and tribal government).
- Outlines reasons why the IGA in question is being created.

- **Sections A through F**

- **Sections A through F** outline the purpose of the agreement, duration and terms of the agreement, and how the payment and balance of funds must be handled by the agreement holders.
  - Important to note that the tribal party shall maintain fiscal records, follow generally accepted accounting principles, and account for all receipts and disbursements of funds transferred.

# Elements of an IGA

- **Section G: Scope of Work**

- The scope of work section details the responsibilities of the tribal grantee under the IGA. This includes details about what the grantee plans to do with the money, what outcomes they hope to achieve, any unallowable costs and their reporting requirements to the agency.

- **Section H: Budget**

- **Section H** will include the budget proposed by the tribal grantee in their IGA proposal. Total accounting for how the whole sum of the grant award will be spent must be included in this section

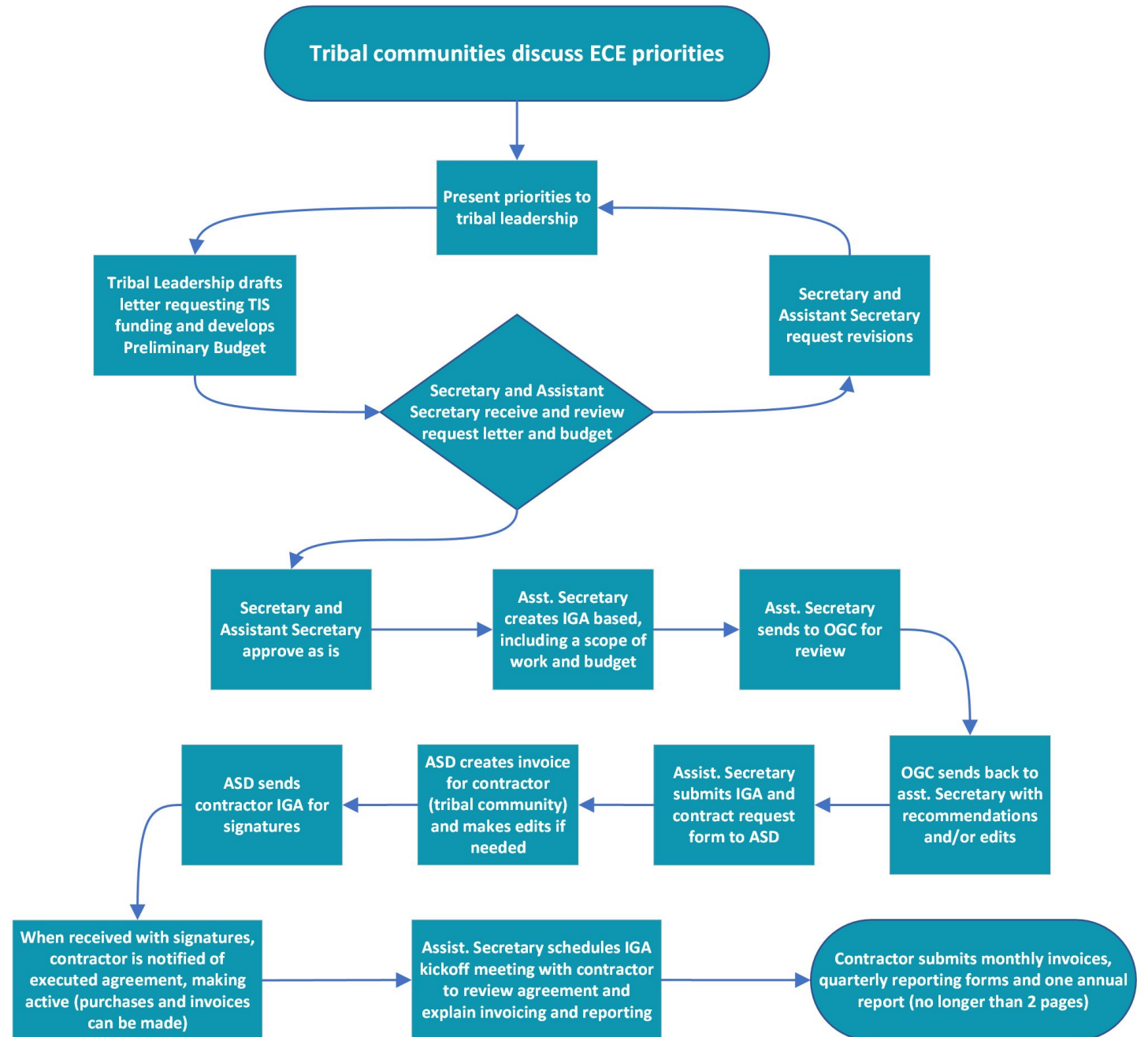
- **Sections I through M**

- **Sections I and J** detail the states liability limitation, the duty of the grantee to maintain time and expenditure records.
- **Section K** establishes a clause that if the NM Legislature does not appropriate funds for the performance of the agreement, it can terminate.
- **Section L and M** state that any modifications to the IGA must be approved by all parties involved, and establishes who is notified about any issue related to the agreement, in writing.

# IGA Process Map

## LEGEND

- **ECE** – Early Childhood Education
- **TIS** – Tribal Investment Strategy
- **OGC** – Office of General Counsel
- **ASD** – Administrative Services Department
- **IGA** – Intergovernmental Agreement







# IGA: Navajo Nation Growing in Beauty and Family Infant Toddler (FIT) Program

- **Intention:** provide services for children birth to 3 years of age that have, or are at risk for having, developmental delays.
- **Outcome:** Indigenous children in NM receive Early Intervention (EI) services that are culturally sustaining, and family driven so that they can fully participate in family and community life.
- Unique IGA within FIT Program

# IGA: Navajo Nation Growing in Beauty and FIT FY23 Totals

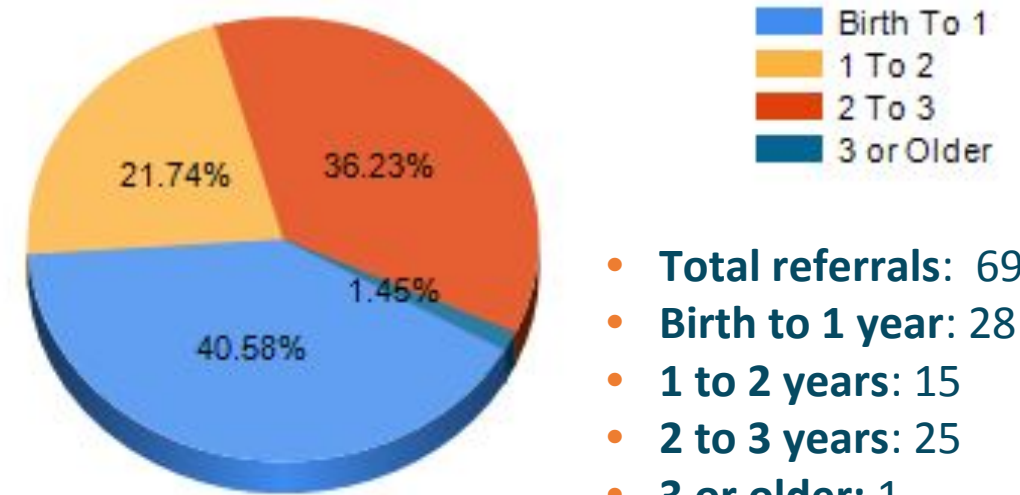
Eligibility Category	Count
Medical/Biological risk	6
Developmental Delay	54
Established Condition	1
Not available	1

**Medical/Biological risk** = A diagnosed physical, mental, or neurobiological condition

**Developmental Delay** = A delay of 25% or more in one or more of these areas of development- cognitive, communication, physical/motor, social, or emotional, adaptive

**Established Condition** = A diagnosed physical, mental, or neurobiological condition that has a high probability of resulting in developmental delay.

% Children by Age at Referral



- Total referrals: 69
- Birth to 1 year: 28
- 1 to 2 years: 15
- 2 to 3 years: 25
- 3 or older: 1
- The average age in months: 15

# IGA: Pinehill and Family Infant/Toddlers

- **Intention:** provide services for children birth to 3 years of age that have, or are at risk for having, developmental delays
- **Outcome:** Indigenous children in NM receive EI services that are culturally sustaining, and family driven so that they can fully participate in their family and community life.
- **IGA with the Ramah School District**
  - FY23 was first year that contracts ceased and an IGA was written instead (contracts are typically used between FIT and provider AGENCIES) This is now an official agreement between governments
    - This meant no “bidding” for the Request For Applications (RFA)
- **Three-year IGA (instead of annual)**
  - This allows consistent funding and program development for Pinehill



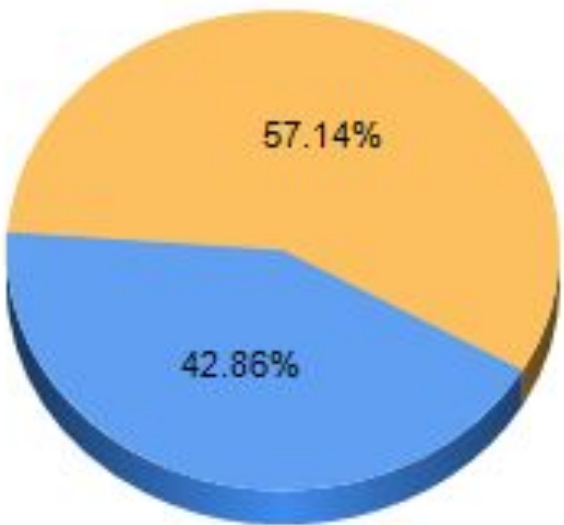
# IGA: Pinehill and FIT FY23 Totals

Eligibility Category	Count
Environmental Risk	3
Developmental Delay	9

**Environmental risk for delay** = a presence of adverse family factors in the child’s environment that increases the risk for developmental delay.

**Developmental Delay** = A delay of 25% or more in one or more of these areas of development- cognitive, communication, physical/motor, social, or emotional, adaptive

% Children by Age at Referral



Birth To 1  
1 To 2

- Total referrals: 7
- Birth to 1 year: 3
- 1 to 2 years: 4
- 2 to 3 years: 0
- 3 or older: 0
- Average age in months: 14



# Mescalero Apache Tribe

## Through Tribal Investment Strategy Funding, Mescalero Apache Tribe has:

- Sustained Early childhood education staff
- Enhanced collaboration
- Supported Early childhood educational and cultural programs
- Improved child find



# Pueblo of Sandia

Funding to increase the quality of and access to early childhood services for Sandia Pueblo, specifically programs designed for children with developmental delays, disabilities or established conditions that incorporate the values, language and traditions of Sandia Pueblo.

## *The Tribal Investment Strategy Funds allows us to:*

- Address speech/language and occupational therapy concerns in a timely manner
- Contract with private Speech Language Pathologists and Occupational Therapists
- Able to help the children with various degrees of speech/language and occupational needs
- Improve the outcomes of **14 children** on the Pueblo



# Current IGA's

- **Jemez Pueblo Walatowa Early Childhood Learning Center (ECLC) –**
  - Support the Walatowa ECLC by providing early childhood language immersion educational experiences for children from birth to school age students.
- **Cochiti Pueblo Keres Children's Learning Center Indigenous Montessori Institute**
  - Funding to select and certify up to ten (10) New Mexico residents working early childhood-related fields with a Montessori certificate focused on indigenous knowledge and philosophy
- **Taos Pueblo**
  - Funding to recruit and retain teachers and reopen Taos Pueblo Infant/toddler classroom and Increase opportunities for IMH initiatives and conduct family parent and early childhood staff community engagement.
- **Zuni Pueblo**
  - Funding to support the pueblo's division of education and training as well as for Zuni pueblo Head Start to provide early childhood language immersion educational experiences for children from birth to school age children.

# New Tribal Intergovernmental Agreements in 2023

- Ohkay Owingeh Pueblo
- Pojoaque Pueblo
- Isleta Pueblo
- Santa Clara Pueblo
- Zia Pueblo





# Thank you for your time!

A very special thanks to our community Co-presenters **Rosario Dick** and **Anne Duran**. If you have any questions regarding the ECECD Intergovernmental Agreements, do not hesitate to contact **Assistant Secretary Sneddy**.



## **Cotillion Sneddy**

Assistant Secretary for Native American Early  
Education and Care

**Email:** [cotillion.sneddy@ececd.nm.gov](mailto:cotillion.sneddy@ececd.nm.gov)

**Ph:** 505-827-7684 *EX: 7684*



NEW MEXICO

**Early Childhood**

Education & Care Department