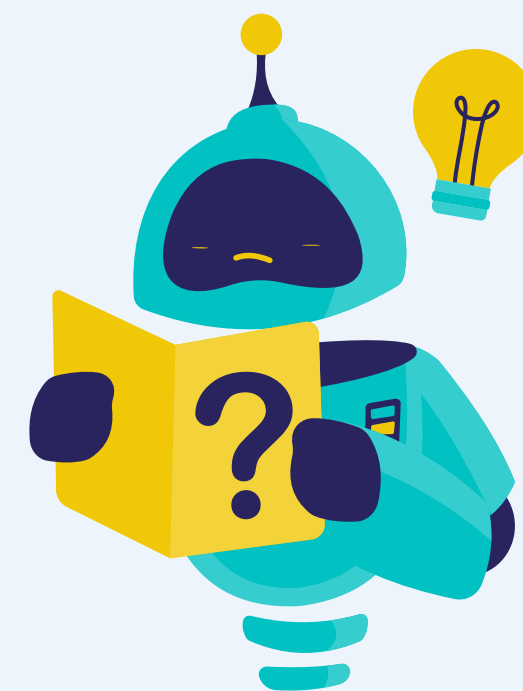




MLSS GUIDEBOOK

**Guide to support schools in completing
the MLSS Community Schools required reporting**



GETTING STARTED

**Schools:
Whole School
Transformation**



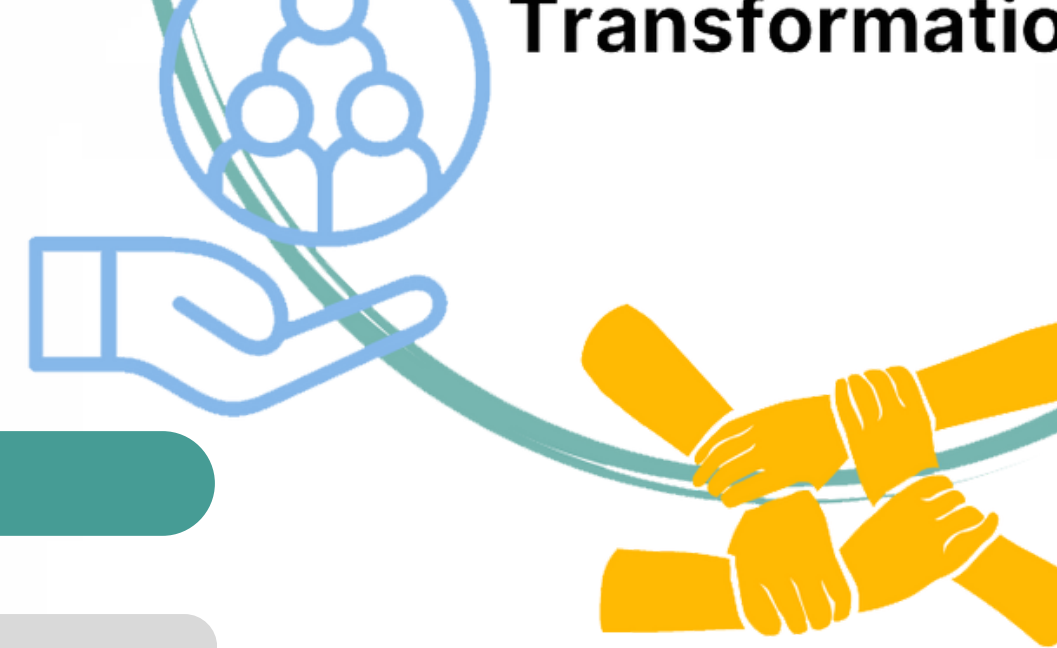
✓ The MLSS for community school sections should be filled out by the principal, community school coordinator, and the SBLT for all NMPED granted community schools. This is a **REQUIREMENT** for the grant.

✓ CS will complete **ALL** of the MLSS between May 16th - June 2nd. Community Schools do **NOT** need to repeat MLSS self-assessment in August.





TIMELINE FOR MLSS CS REPORTING



**Community
Schools:
Whole School
Transformation**



WHAT DO YOU REPORT?

	CS MLSS Section	CS Strategic Plan	All MLSS
 Planning grant for SY23-24 <small>Awarded</small>	Required	Optional	Required
 NMPED Granted Community Schools <small>Receiving</small>	Required	Required	Required
 Non-NMPED Community Schools <small>Not receiving</small>	Required	Optional	Required
 Other Public Schools <small>Not receiving</small>	Required	Optional	Required



FOUNDATION FOR THE CS MLSS MEASURES



✓ The MLSS self-assessment aligns with and feeds directly into NM-DASH (90-Day Plan)

✓ The MLSS measures for community schools come directly from research and best practices across the nation; they also include best practice for local NM. They are based in the core implementation strategies.

✓ As this is the first time MLSS has been used for reporting of the NMPED CS grant, there may need to be adjustments for next year (please let us know what might need to be changed!). Survey!

Community
Schools:
Whole School
Transformation



THE LEAD INDICATORS GUIDE

Community
Schools:

Whole School

L

Learning the
Strategy (1pt)

Have a basic foundational understanding and knowledge of this CS strategy. The SBLT is being formed and is working towards a plan for this implementation strategy. *Key words: plan, few key practices, beginning, vague, learning*

E

Engaging for
Change (2pt)

The SBLT is established and have begun efforts in this strategy, but not fully developed to a complete implementation level. *Key words: partial understanding, some key practices, developing, some implementation, some impact, engaging*

A

Achieving
Impact (3pt)

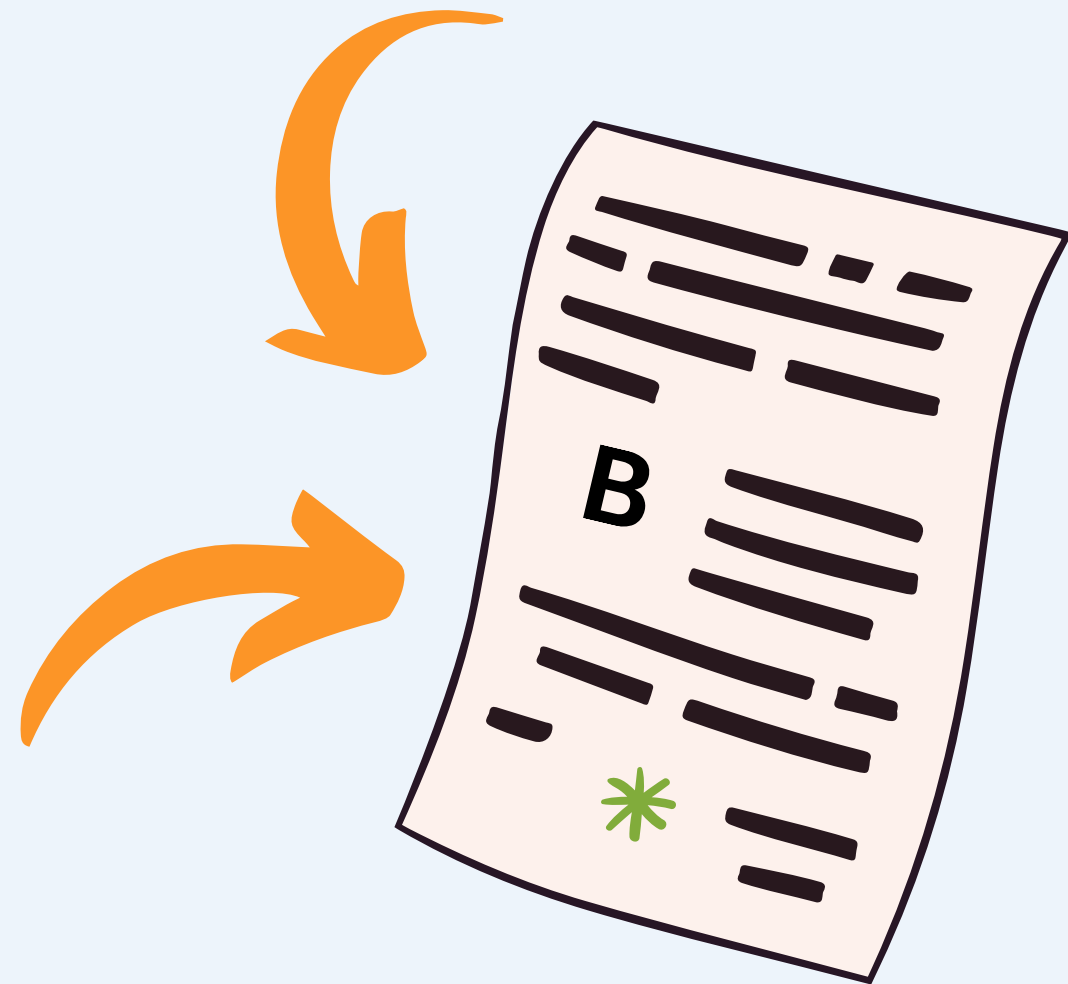
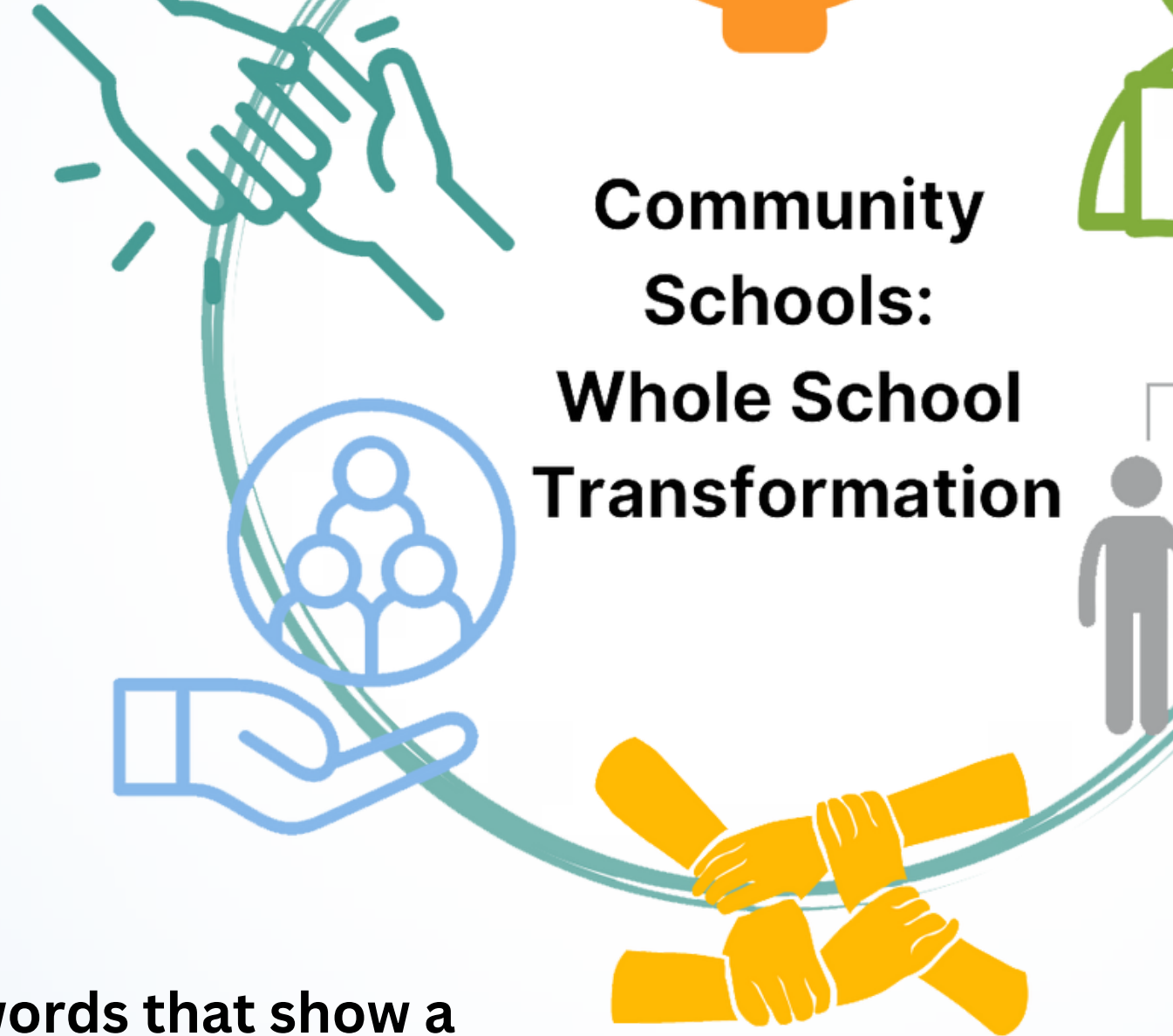
The SBLT is using this strategy effectively and creating a foundation for whole school transformation. *Key words: effective, most key practices, knowledgeable, full implementation, foundational, impact*

D

Driving
Transformation
(4pt)

The SBLT are considered experts in this strategy; excelling through innovative strategies, a model for other community schools. *Key words: experts, all key practices, systemic change, whole impact, transformation*

MLSS DOCUMENT TEXT



✓ Text in bold indicates key words that show a range to rate yourself through the L E A D point system

✓ Text with an asterisk* indicates that there is additional clarification at the end of the strategy definition



THE COMMUNITY SCHOOL STRATEGIC PLAN

**Community
Schools:
Whole School
Transformation**



The current community school strategic plan report is the only required upload for all NMPED granted community schools.



This report should be the current, yearly CS Strategic Plan:

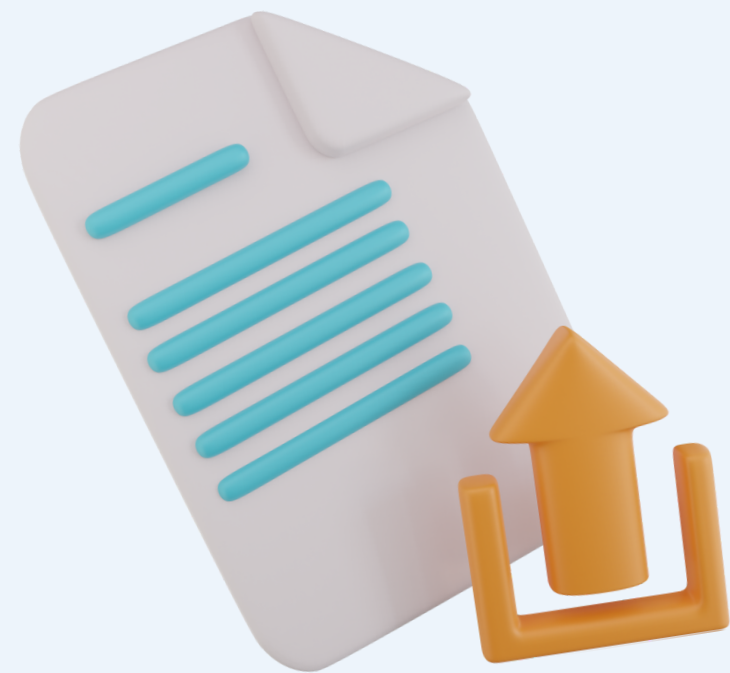
- SBLT members list and meeting dates
- Report on "CS 101" meeting at school
- List of initiatives, which includes (for each initiative):
 - How the initiative aligns and connects directly to the current needs assessment and root cause analysis
 - The targeted supports, partners and resources for each initiative
 - Organized into the 6 key practices
 - A mechanism of measurement, evaluation and continuous improvement
 - Outcomes for those goals
- Sustainable funding plan
- Systemic sustainability plan (for renewal year only)



THE COMMUNITY SCHOOL STRATEGIC PLAN



The current community school strategic plan report is the only required upload for all NMPED granted community schools.



Name of the CS Strategic Plan Report to upload:

- Date (YYYY_MM_DD) CS School Name
- **EXAMPLE: 2023_05_16 CS Apache ES**
- Please no acronyms for school name
- Please upload as a PDF
- 5-10 pages



**Community
Schools:
Whole School
Transformation**

THE COMMUNITY SCHOOL STRATEGIC PLAN

Community Schools:
Whole School Transformation



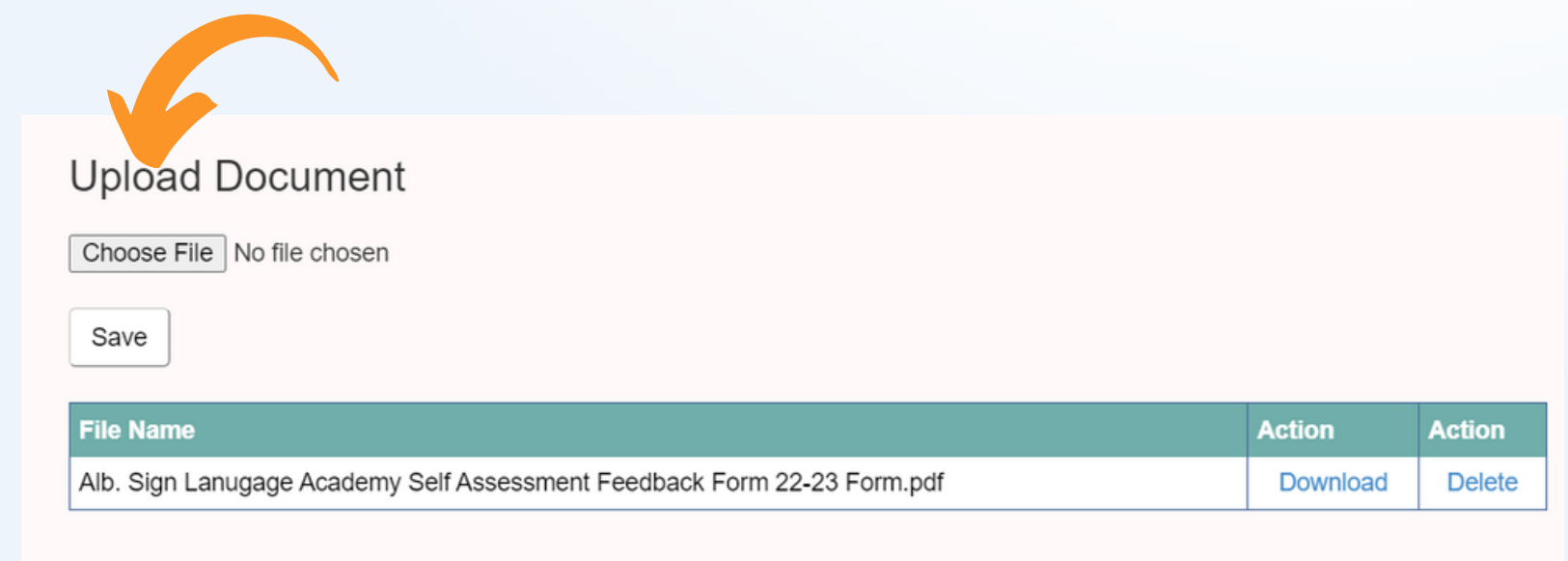
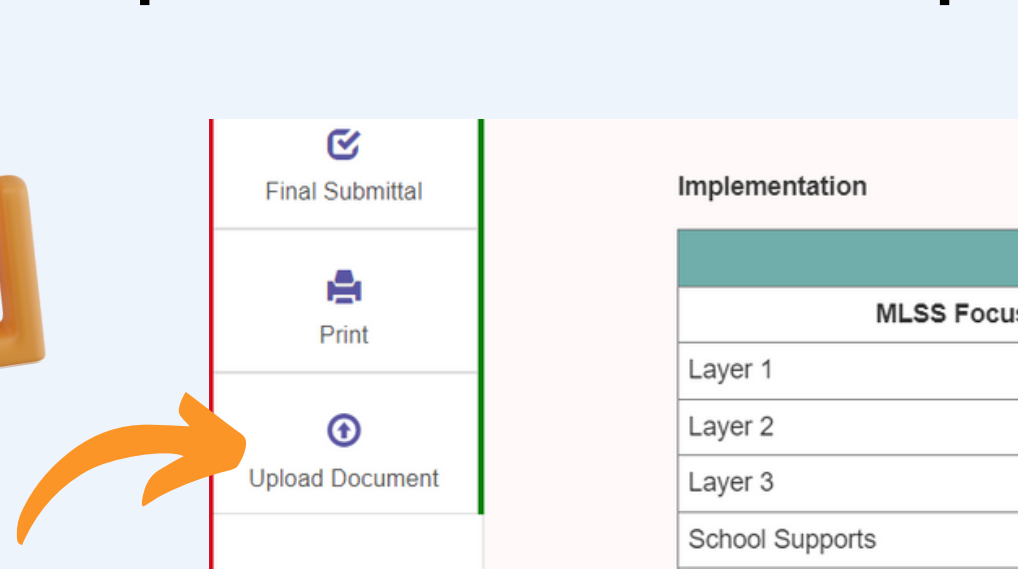
The current community school strategic plan report is the only required upload for all NMPED granted community schools.

Step 1: Login to MLSS

Step 2: Choose your school

Step 3: Scroll down and find "Upload Document" button on bottom left

Step 4: "Choose File" and upload PDF with correct file name



HONEST ASSESSMENT



There is no funding attached to these reported scores.



**Please be honest.
There is no "good" or "bad" number score.**



Use your best judgement on choosing the points for each strategy.



**Community
Schools:
Whole School
Transformation**

CONTACT



Questions about content and choosing scores, contact Christina Weeks at Christina.Weeks@ped.nm.gov



Questions about MLSS link, login and uploads, contact Chris Vian at Christopher.Vian@ped.nm.gov

Note: When emailing Chris with MLSS questions put "Self Assessment TA" in the subject line





QUESTIONS?

