



October 30, 2023

Clifford Tompson, Principal
San Diego Riverside Charter School
P.O. Box 99/504 Mission Road
Jemez Pueblo, NM 87024

RE: *Received Notice of Intent to Renew Education Lease of Tribal Owned Land*
Reference #5311361317/Amendment to Education Lease of Tribal Owned Land dated June 21, 2022


Dear Mr. Tompson,

I am in receipt of Ms. Lerner's email dated October 27, 2023 notifying the Pueblo of the school's request to extend its school lease to a one-year renewal lease with the Pueblo. This letter confirms receipt of the notice and confirms the extension of the term in the above referenced lease beginning *July 1, 2023* and ending *June 30, 2024*, for 5.47 +/- acres with the modifications of some particular stipulations regarding the Pueblo of Jemez exercising its rights to the Ownership of the Modular Buildings.

The Pueblo of Jemez will utilize the South Modular Building to house the Pueblo of Jemez Education Department's Language Immersion School for the remainder of this Extended Lease. New negotiations will take place when the new Lease is established.

The rental payments due under the extended lease will be discussed upon receipt of your grant award letter for lease payments. We request you keep us informed on the status of the lease payments.

Please be advised that any future lease to be entered into with the Pueblo will be pursuant to the Pueblo's Title XVI Tribal Leasing Code and this lease will be only for the noted dates above.


Thurman J Loretto, Realty Officer
Pueblo of Jemez Realty Office


Dominic Gachupin, Governor

Pueblo of Jemez Realty Office

4771 Highway 4., Box 100 • Jemez Pueblo • New Mexico • 87024
(575) 834-7277 • (575) 834-7331



PUEBLO *of* **JEMEZ**

CC: POJ Governors

Vincent A. Toya, SR., Interim Tribal Administrator

Kurt Knight, Interim Finance Director

Kevin Shendo, Education Director

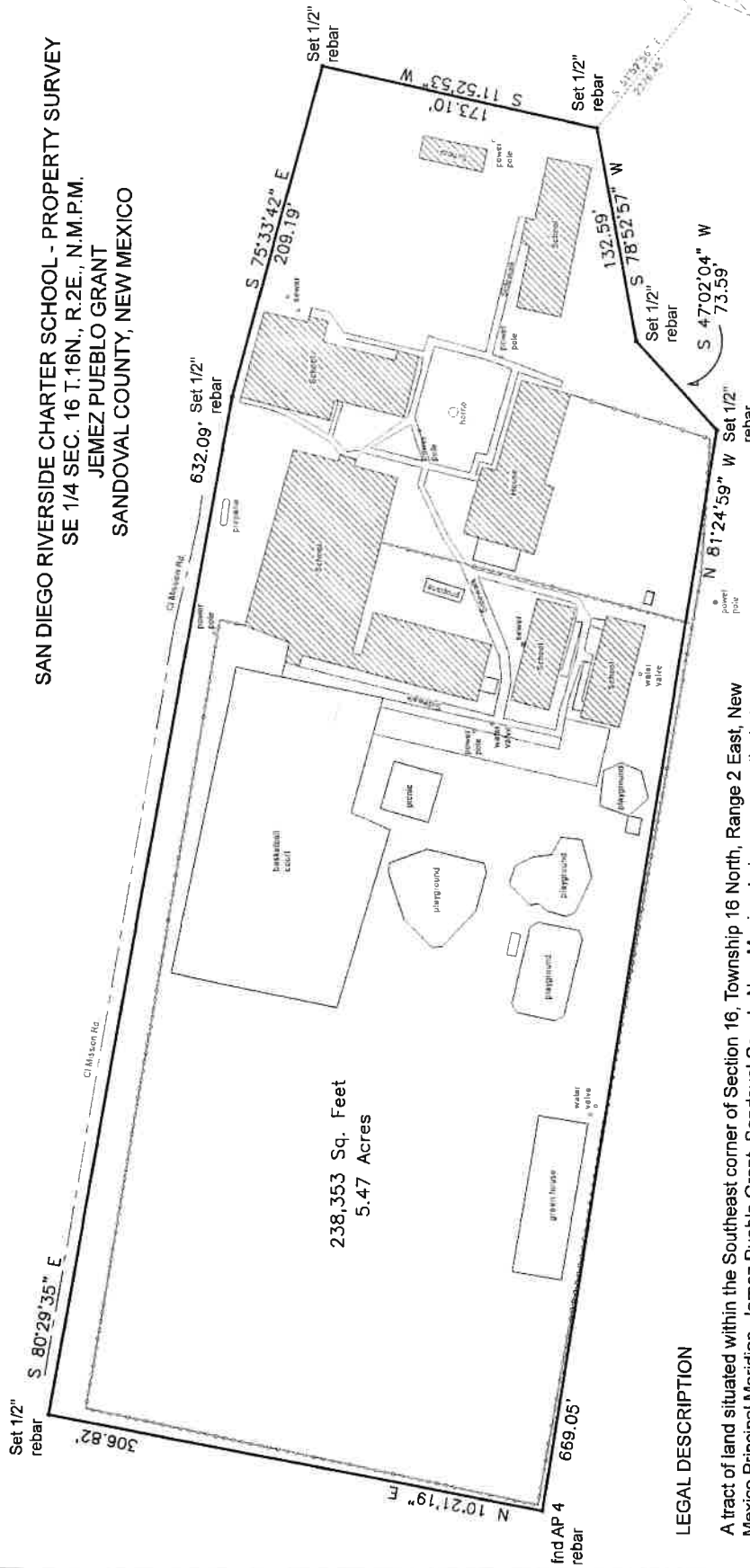
David Yepa, Legal Counsel

Attachment: Survey Plat

Pueblo of Jemez Realty Office

4771 Highway 4., Box 100 • Jemez Pueblo • New Mexico • 87024
(575) 834-7277 • (575) 834-7331

SAN DIEGO RIVERSIDE CHARTER SCHOOL - PROPERTY SURVEY
SE 1/4 SEC. 16 T.16N., R.2E., N.M.P.M.
JEMEZ PUEBLO GRANT
SANDOVAL COUNTY, NEW MEXICO



238,353 Sq. Feet
 5.47 Acres

SCALE
 1" = 80'

LEGAL DESCRIPTION

A tract of land situated within the Southeast corner of Section 16, Township 16 North, Range 2 East, New Mexico Principal Meridian, Jemez Pueblo Grant, Sandoval County New Mexico, being more particularly described as follows:

Beginning at the Southeast corner of the herein described parcel being a corner whence the Southeast corner of Section 16 bears S.51°52'56"E., 2376.45 feet, thence from the said point of the beginning on a set 1/2 inch rebar S.78°52'57"W., 132.59 feet to a set 1/2 inch rebar, thence S.47°02'04"W., 73.59 feet to a set 1/2 inch rebar, thence N.81°24'59"W., 669.05 feet to a AP 4 rebar, thence N.10°21'19"E., 306.82 feet to a set 1/2 inch rebar, thence S.80°29'35"E., 632.09 feet to a set 1/2 inch rebar, thence S.75°33'42"E., 209.19 feet to a set 1/2 inch rebar, thence S.11°52'53"W., 173.10 feet to the said point of the beginning, containing an area of 238,353 Sq. Ft. or 5.47 +/- acres.

Attest:

[Signature]
 Garrett Magdalena, Survey Tech
 Pueblo of Jemez Realty Office
 May 16, 2022

[Signature]
 Thurman J. Loretto, Realty Officer
 Pueblo of Jemez Realty Office
 May 16, 2022





PUEBLO of JEMEZ

August 8, 2018

Norma R. Ahlskog
Financial Specialist
State of NM Public School Facilities Authority
1312 Basehart, SE - Suite 200
Albuquerque, New Mexico 87106

Dear Ms. Ahlskog:

This letter serves as a notification from the Pueblo of Jemez Tribal Administration and Pueblo of Jemez Public Works Department indicating that the San Diego Riverside Charter School facility meets the requirements of Subsection C of Section 22-8B-4.2 NMSA 1978 for E-Occupancy.

San Diego Riverside Charter School (SDRCS) is located on the Pueblo of Jemez Indian Reservation (Sovereign Nation) and is evaluated by the Pueblo of Jemez Public Works Department and Indian Health Services Environmental Health Services Office.

San Diego Riverside Charter School maintains a 5-year lease agreement from July 1, 2016 with four (4) one-year options to renew with the Pueblo of Jemez Tribal Administration (Landlord), who maintains the facility applicable to state adequacy standards at no additional cost to the school. SDRCS currently leases approximately 17,177 square feet from the Pueblo of Jemez Tribal Administration located at 504 Mission Rd, Jemez Pueblo, NM. 87024.

According to the Pueblo of Jemez and Indian Health Services – Environmental Health Services facility inspections, SDRCS current facility has been ranked on the condition index facility assessment which indicates an NMCI score of 34.61%.

If you have any additional questions regarding Pueblo of Jemez Tribal Facilities, please contact Mr. Todd Loretto, Public Works Facilities Director at 575.834.9143 or via e-mail at Todd.Loretto@jemezpueblo.org.

Sincerely,

Paul S. Chinana
Governor

CC: Todd Loretto, Pueblo of Jemez Public Works Director
Benny Shendo Jr., Pueblo of Jemez Tribal Administrator
Tony Archuleta, SDRCS Principal

Office of the Governor

4471 Highway 4, Box 100 • Jemez Pueblo • New Mexico • 87024
(575) 834-7359 • Fax (575) 834-7331