

E. Facility

A description of the charter school facilities and assurances that the facilities are in compliance with the requirements of Section 22-8B-4.2 NMSA 1978.

The school must provide a narrative description of its facilities. The school should attach any facility plans or the school's Facility Master Plan in **Appendix D**.

In addition, attach a copy of the building E Occupancy certificate and a letter from the PSFA with the facility NMCI Score as **Appendix D**, indicating that the school facility meets the requirements at Subsection C of 22-8B-4.2 NMSA 1978. (If the charter school is relocating or expanding to accommodate more students.)

The school must also provide assurances that the facilities are in compliance with the requirements of Section 22-8B-4.2 NMSA 1978, including subsections A, C, and D. A template is available from the PEC's website.

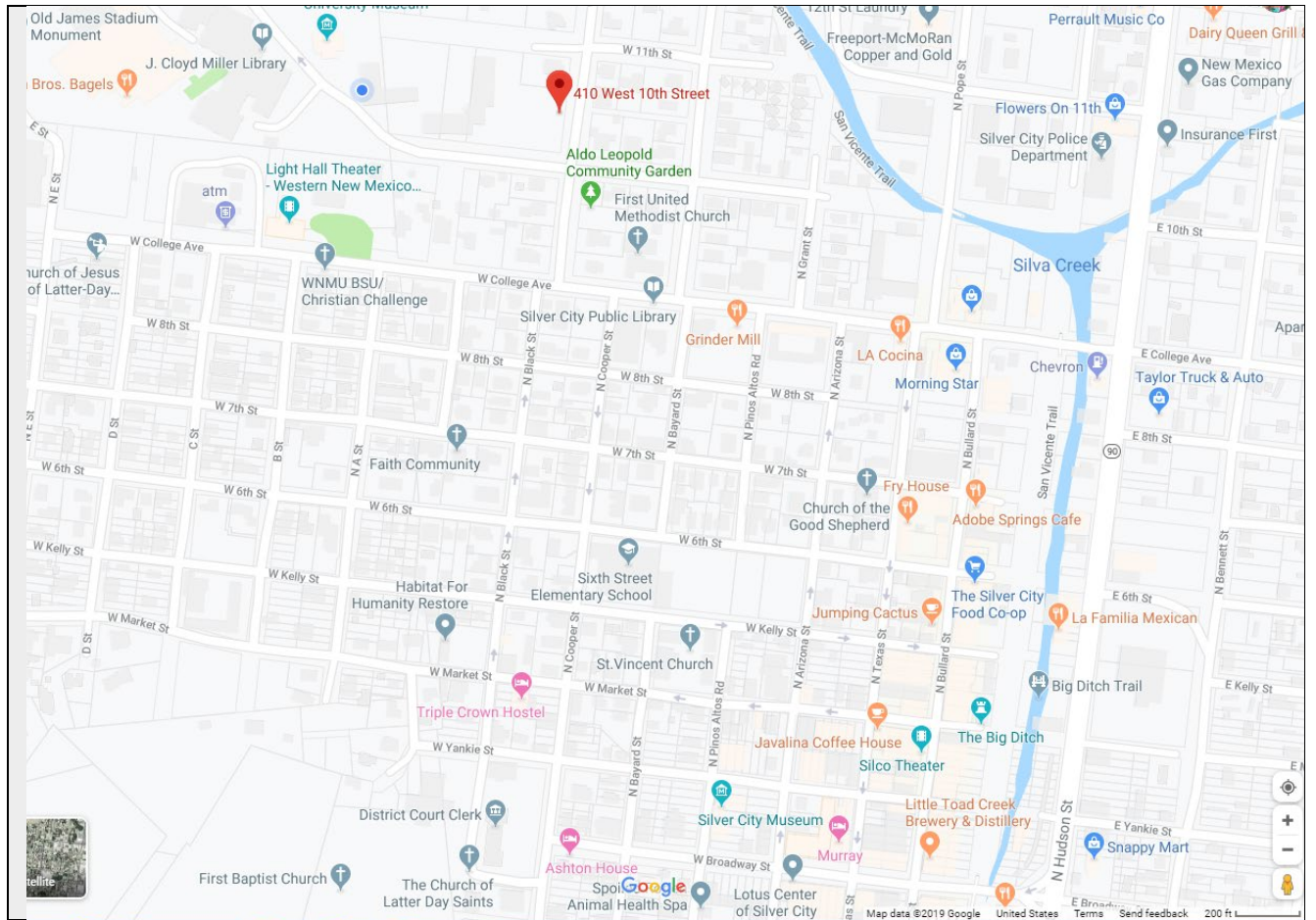
School response:

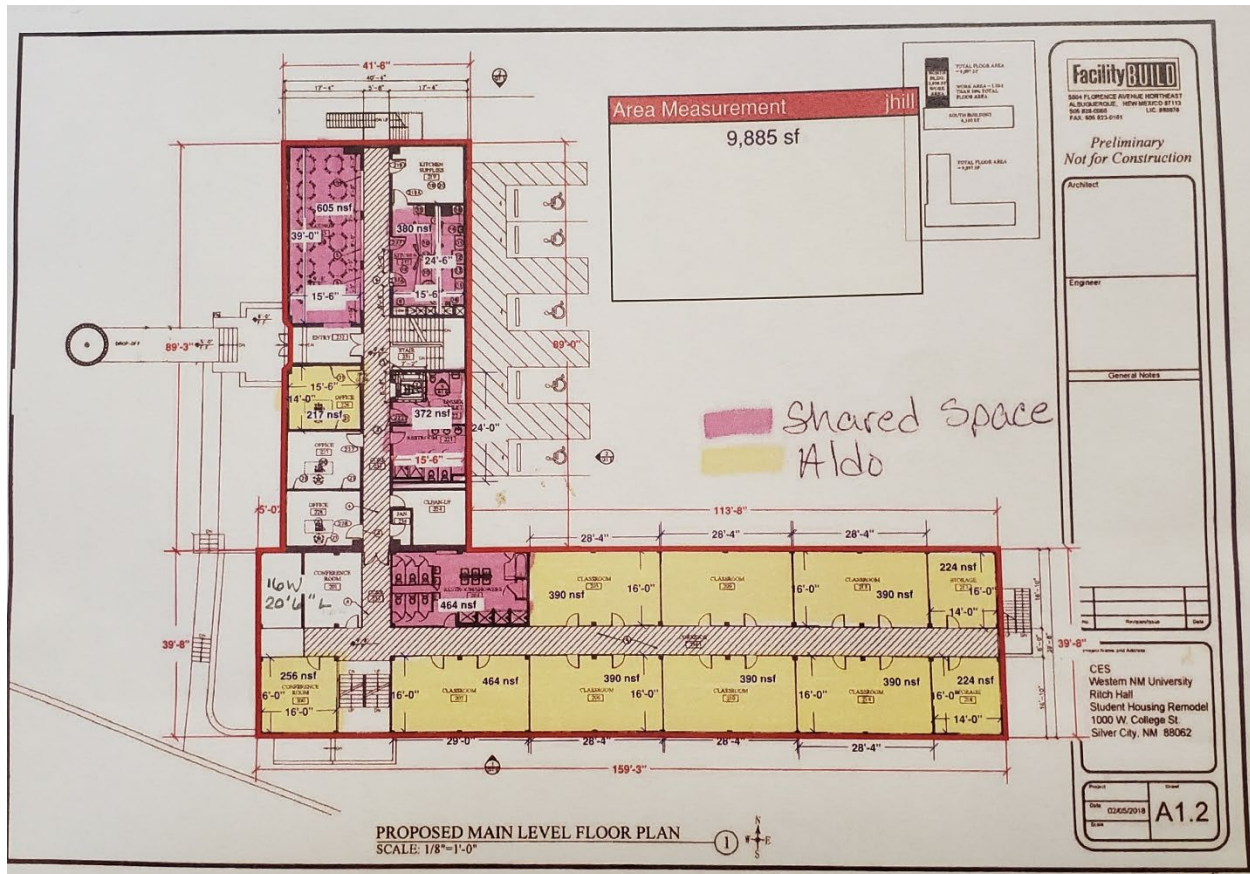
Aldo Leopold Charter School (grades 9-12)



Aldo Leopold Charter School (grades 9-12) is centrally located on the Western New Mexico University (WNMU) Campus at Ritch Hall 410 West 10th Street, Silver City, NM 88061. This location affords students ample opportunity to participate in WNMU educational, cultural, and social offerings. The campus is also located close to downtown Silver City where students participate in a variety of internship and other educational opportunities afforded by area small businesses, museums, and libraries. Public bus routes, biking lanes, and the pedestrian-friendly neighborhood provide our students with a number of ways to access the school (see map below).

The site location is within a quiet section of the WNMU campus across from the museum and the J. Cloyd Miller Library. There is sufficient parking for staff and students on site. And there are several greenspaces that provide student gathering space, recreation, and leisure.





The following is a table that includes Aldo Leopold Charter School (grades 9-12)'s site and facility data.

Date of Occupation of Building	August 2019
NMCI	N/A This space is new and has not been scored.
Lease	From Western New Mexico University
Total Building Area	6,520 sf
Current Net Usable Space	TBD by the PSFA
Total Number of Classrooms	9
2019-2020 40-day enrollment	99
Enrollment Cap	120
Number of Gross Square Feet per Student	65.86 sf
Site Utilities and Water Sources	Town of Silver City

As shown in the floor plan and indicated in the table above, the facility fully supports the on-going implementation of the school's mission and its instructional programs.

- Classrooms allow multiple methods of instructional delivery and various arrangements to meet student needs.
- Common space is large enough to accommodate group gatherings for a variety of purposes.
- The layout of the interior visually and physically maximizes supervision and safety.
- Office and small meeting rooms accommodate needs for individualized student programming.
- The facility is attractive and comfortable, creating an inviting atmosphere where our mission and vision may be carried out.